



MUNSTER
BOVINE
Collectively Improving Farm Life



Production & Type
2025

Index

1	FR1500	VATLAND GROVES-ET
2	FR1449	DENOVO 16703 PERCY-ET
3	FR1518	DENOVO 18732 HEXAGON-ET
4	FR1557	PROGENESIS PERKY
5	FR8733	BOGHILL GLAMOUR HAILSTONE ET
6	CODE PENDING	Beyond Hi-Praise-Et
7	CODE PENDING	Beyond Hi-Power-Et
8	FR8079	DENOVO 17118 PROVO-ET
9	FR7806	WESTCOAST ROCKNROLL
10	FR4187	WESTCOAST PERSEUS
11	FR4368	WESTCOAST YAMASKA
12	FR9734	WESTCOAST EARLYBIRD
13	FR8697	WESTCOAST MIDMARCH
14	FR9881	(IG)LISDUFF NAPOLEON ET
15	FR7929	(IG)TANKARDSROCK TEAK
15	FR9316	(IG)DUNGRANGE DAN
16	FR9178	(IG) LISDUFF C BREIZ
17	FR7910	(IG)BALLYELLY CHILLI
17	FR7905	(IG)BUNACLOY ALIBI
18	FR9842	(IG)BALLYDEHOB RINGO
19	FR9289	(IG) JOHN SWELL RORY
19	FR9124	(IG)BALMLAG LEDGER
21	CODE PENDING	PROGENESIS RUBBLE
21	CODE PENDING	BOMAZ GIZMO-ET
24	FR1617	WELCOME-TEL COVERBOY-ET
24	FR9743	PROGENESIS METALLICA
25	FR7158	(IG)DOONMANAGH CHOPPER
25	FR6139	(IG)LISDUFF PERCEPTION
26	FR8307	WINSTAR GRAZIANO-ET
26	FR6445	KOEPON RAPTOR
27	FR6571	DENOVO 15551 SUBLIME-ET
27	FR8223	PINE-TREE-I PURSUIT
28	FR9702	WESTCOAST ALMAMATER
28	FR9731	STANTONS ADORABLE
29	FR9704	SANDY-VALLEY I BATMAN-ET
29	FR9803	BOMAZ ENVOY-ET
30	CODE PENDING	SBG MECCA P
30	FR7923	(IG)TOBERMARTIN FRANCIS Pp
31	CODE PENDING	DREW HOLME LEYHIGH PP
31	FR9818	WINSTAR MEADOW-PP-ET
32	FR1686	HELLENDER BRANDY P
32	FR1077	MAT RED Pp
33	FR1003	3STAR OH SHARP RED
33	FR8343	KOEPON OH RYDER RED
34	FR9740	HOOGERHORST DG OH RUBELS-RED
34	FR7860	(IG)DOONMANAGH REDCLIFF
35	FR8730	COMESTAR LEMAGIC
35	FR8694	COOKIECUTTER HOLYSMOKES-ET
36	FR9830	PROGENESIS AMBROSE
37	FR1091	PROGENESIS ANAHITA
37	CODE PENDING	PROGENESIS ANEESH
38	FR9752	MB-LUCKYLADY BULLSEYE-ET
38	FR9746	AOT HAMPSHIRE-ET
39		Beef for the Dairy Herd



MILK SOLIDS

Milk Solids: Indicates superior sires producing more than 40 kg of Milk Solids (Fat + Protein)



HEALTH

Health Plus: Identifies superior sires with a high Health Sub-Index value greater than €20. The Health Sub-Index incorporates SCC, Mastitis and Lameness.



FERTILITY IMPROVER

Fertility Improver: Represents superior sires that are in the Top 1% (i.e., €140 +) for Fertility Sub Index.



COMPONENT SPECIALIST

Component Specialist: Indicates superior sires that are achieving exceptional fat and protein percentages.



HIGH TYPE SIRE

High Type: Identifies sires excelling in conformation traits.



EASY CALVING SIRE

Easy Calving: The superior sires that are most suitable for heifers due to their low heifer calving difficulty (less than 6%) and high reliability (greater than 85%).



A2 A2

A2: Represents the sire who are producing the Beta Casein type: A2/A2



ROBOT READY

Robot Ready: The superior sires with strong central ligament udder support and teat placement close to the centre of the udder as well as average teat length.

DISCLAIMER

Every reasonable effort has been made to ensure that the information provided in this publication is reasonably comprehensive, accurate and clear.

Terms and Conditions:

For our full Terms and Conditions please check our website: munsterbovine.ie/terms-and-conditions/

Trait Ranking

Top Prod SI	Code	Name	Prod SI	Pg
	FR1557	PROGENESIS PERKY	154	4
	ELI003245608803	BOMAZ GIZMO-ET	154	21
	FR9743	PROGENESIS METALLICA	152	24
	FR7812	PROGENESIS BLACKTIE	147	
	FR8079	DENOVO 17118 PROVO-ET	147	8

Top EBI	Code	Name	EBI SI	Pg
	FR7929	(IG)TANKARDSROCK TEAK	348	15
	FR9842	(IG)BALLYDEHOB RINGO	331	18
	FR9289	(IG) JOHN SWELL RORY	323	19
	FR9316	(IG)DUNGRANGE DAN	315	15
	FR7158	(IG)DOONMANAGH CHOPPER	307	25

Top Fert SI	Code	Name	Fert SI	Pg
	FR7929	(IG)TANKARDSROCK TEAK	151	15
	FR9289	(IG) JOHN SWELL RORY	132	19
	FR9881	(IG)LISDUFF NAPOLEON ET	131	14
	FR9842	(IG)BALLYDEHOB RINGO	130	18
	FR9316	(IG)DUNGRANGE DAN	128	15

Top Health SI	Code	Name	Health SI	Pg
	FR9743	PROGENESIS METALLICA	41	24
	FR9842	(IG)BALLYDEHOB RINGO	38	18
	FR1338	PROGENESIS TROY	37	
	FR7929	(IG)TANKARDSROCK TEAK	37	15
	FR9806	STANTONS APPLICABLE	35	

Top Solids KG	Code	Name	Solids Kg	Pg
	FR1557	PROGENESIS PERKY	58	4
	ELI003245608803	BOMAZ GIZMO-ET	154	21
	FR9776	WESTCOAST ALCOVE	54	
	FR8307	WINSTAR GRAZIANO-ET	53	26
	FR1617	WELCOME-TEL COVERBOY-ET	53	24

Top Type	Code	Name	Type	Pg
	FR1686	HELLENDER BRANDY P	4.70	32
	FR9824	WESTCOAST TARMAC	3.90	
	FR9746	AOT HAMPSHIRE-ET	3.86	38
	FR1091	PROGENESIS ANAHITA	3.82	37
	APX000014259876	PROGENESIS ANEESH	3.81	37

Top Udder	Code	Name	Udder	Pg
	FR1686	HELLENDER BRANDY P	4.16	32
	FR8343	KOEPON OH RYDER RED	3.84	33
	FR1091	PROGENESIS ANAHITA	3.79	37
	FR1338	PROGENESIS TROY	3.77	
	ELI003253835878	BEYOND HI-POWER-ET	3.73	7

Top Feet & Legs	Code	Name	F&L	Pg
	FR1686	HELLENDER BRANDY P	3.96	32
	FR9806	STANTONS APPLICABLE	3.29	
	FR8730	COMESTAR LEMAGIC	2.93	35
	FR9746	AOT HAMPSHIRE-ET	2.85	38
	APX000014075034	PROGENESIS RUBBLE	2.76	21

Top TB Resistance	Code	Name	TB	Pg
	FR7929	(IG)TANKARDSROCK TEAK	3.00	15
	FR9842	(IG)BALLYDEHOB RINGO	4.94	18
	FR9743	PROGENESIS METALLICA	5.17	24
	FR9779	LEGEND-MAKER VICTOR	6.08	
	FR8694	COOKIECUTTER HOLYSMOKES-ET	6.08	35

Robot Ready	Code	Name	Pg
	FR8730	COMESTAR LEMAGIC	35
	FR8307	WINSTAR GRAZIANO-ET	26
	FR9803	BOMAZ ENVOY-ET	29
	FR8079	DENOVO 17118 PROVO-ET	8
	FR4368	WESTCOAST YAMASKA	11



MUNSTER BOVINE

Collectively Improving Farm Life

PRODUCING
SHOW CHAMPIONS
FOR DECADES



National Dairy Show 2023
SUPREME CHAMPION:
EEDY DOORMAN FAME EX 93

Exhibited by R&S, J&L Helen

☆ Sired by Munster Bovine's VAL-BISSON DOORMAN ☆

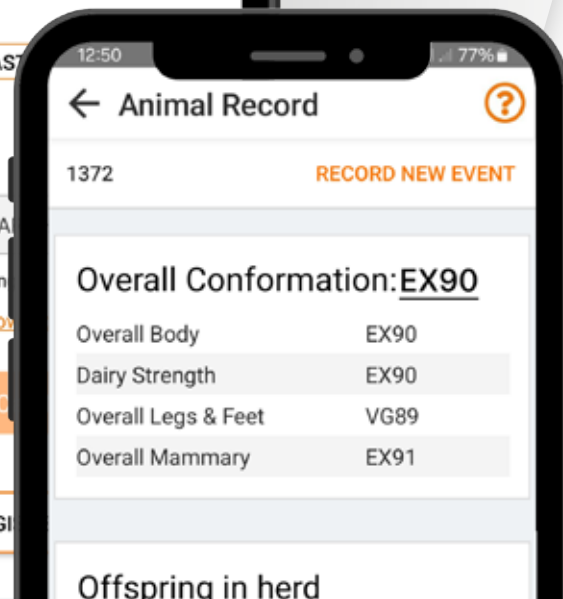
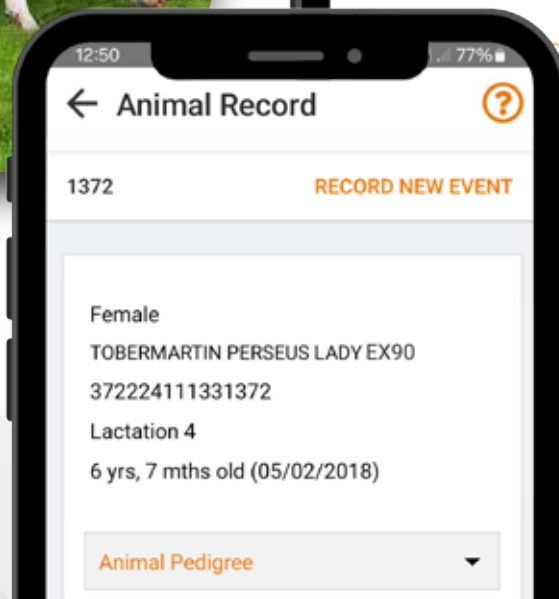
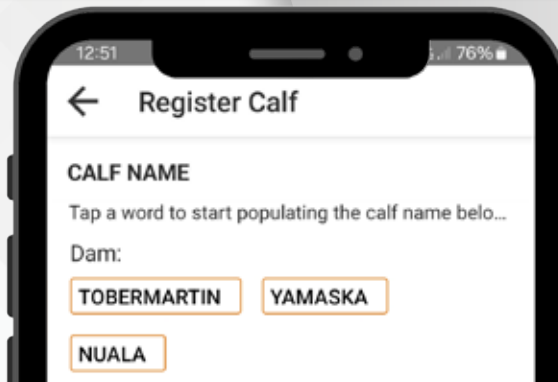
☎ 022 43228 ✉ info@munsterbovine.ie 🌐 munsterbovine.ie 📺 📷 📧 📺 📺



Supporting Pedigree Farmers Every Step of the Way!

- ✓ Classifications Scores & Pedigree Names
- ✓ Tailored Calf Registration for Pedigree Herds
- ✓ Autumn Breeding Metrics

*Make The Best Decision For Your Pedigree Herd Today
And Join FarmOps!*



For Customer Support,
Call 087 490 0207 or visit our website.

FR1500 VATLAND GROVES-ET

PED

DOB
09/01/2022

HO 100%

Beta Casein
A2/A2

aAa

HERD BOOK NUMBER
HOL840M003236022687



VATLAND BRENNAN LIV 4855 VG86



SCAN ME FOR MOST RECENT PROOF



EBI SEPT. 24 SOURCE ICBF	REL
EBI 248	53%
Prod. SI	127 75%
Fert. SI	84 37%
Carbon SI	-19 51%
Calv. SI	56 22%
Beef SI	-16 37%
Maint. SI	-4 32%
Mgmt. Si	-2 59%
Health SI	22 74%

USA AUG 24			
TPI 2942			
PRODUCTION			
Milk Lbs	903	Daus	0
Fat Lbs	90	Fat %	0.21
Protein Lbs	61	Protein %	0.12
OTHER TRAITS			
DPR	0.4		
Productive Life	5.7		
SCC	2.88		
TYPE			
PTAT	1.04		
Udder Composite	0.99		
Feet & Legs Composite	0.62		
BCS	0.05		

- High fertility with great Solids - 45Kgs
- Plus 2.4 points for Udder and Overall Conformation
- High wide rear udders, ideal teat length
- Outcross pedigree, healthy cows

LINEAR EVALUATION - INTERBULL 2024

		-5	+5
STATURE	1.94		
CHEST WIDTH	-0.72		
BODY DEPTH	-0.66		
ANGULARITY	1.02		
RUMP ANGLE	-1.38		
RUMP WIDTH	0		
REAR LEG SET	-0.26		
LOCOMOTION	2.59		
FOOT ANGLE	2.54		
FORE UDDER	2.53		
REAR UDDER	3.13		
UDDER SUPPORT	3.44		
UDDER DEPTH	2.98		
TEAT PLACEMENT	0.51		
TEAT LENGTH	0.1		
BCS	-0.7		
OVERALL TYPE	2.46		
OVERALL UDDER	2.34		
OVERALL F&L	1.56		

PRODUCTION					
Milk Kg	Fat Kg	Protein Kg	Solid Kg	Fat %	Prot %
496	24	21	45	0.08	0.06

FERTILITY		CALVING DIFFICULTY			
Calving Interval	Survival	Records	Dairy Heifer Diff	Rel	Risk
-3.7	3	0	5.33	0	High*

MANAGEMENT		HEALTH				DTRS
Milk Speed	Temp	SCC	Mastitis	Lameness	TB	0
-31.4	-0.34	-0.23	-0.08	-0.08	8.06	0

SIRE: PINE-TREE GARDNER-ET

MS: PINE-TREE CW LEGACY-ET

MGS: WELCOME-TEL BRENNAN 3158-ET

DAM: VATLAND LEGACY LYRIC5311-ET

MD: VATLAND BRENNAN LIV 4855 VG86

MGD: VATLAND SILVER LILLY 4377 VG87

FR1449 DENOVO 16703 PERCY-ET

PED

DOB
24/01/2020

HO 100%

Beta Casein
A1/A2

aAa

HERD BOOK NUMBER
HOL840M003210133212



5TH DAM: De-Su 520-ET EX-90



SCAN ME FOR MOST RECENT PROOF



HEALTH



HIGH TYPE SIRE



COMPONENT SPECIALIST



SEXED SEMEN

EBI SEPT. 24 SOURCE ICBF	REL
EBI 225	61%
Prod. SI 135	77%
Fert. SI 70	48%
Carbon SI -17	57%
Calv. SI 40	56%
Beef SI -25	45%
Maint. SI 1	35%
Mgmt. Si -2	60%
Health SI 24	76%

USA AUG 24			
TPI 2834			
PRODUCTION			
Milk Lbs	73	Daus	21
Fat Lbs	104	Fat %	0.40
Protein Lbs	42	Protein %	0.15
OTHER TRAITS			
DPR	-1.2		
Productive Life	4		
SCC	2.68		
TYPE			
PTAT	1.28		
Udder Composite	1.13		
Feet & Legs Composite	-0.07		
BCS	0.82		

- Prince Son from an Excellent Cow Family
- Nice balance of Strength & dairyness
- + €135 Milk SI with almost 50Kgs of Solids
- Super health SI

LINEAR EVALUATION - INTERBULL 2024		-5	+5
STATURE	1.54		
CHEST WIDTH	-0.04		
BODY DEPTH	1.18		
ANGULARITY	1.44		
RUMP ANGLE	-0.66		
RUMP WIDTH	0.59		
REAR LEG SET	-1.24		
LOCOMOTION	2.2		
FOOT ANGLE	1.63		
FORE UDDER	4.23		
REAR UDDER	4.61		
UDDER SUPPORT	2.99		
UDDER DEPTH	3.52		
TEAT PLACEMENT	1.61		
TEAT LENGTH	-1.65		
BCS	-0.9		
OVERALL TYPE	3.29		
OVERALL UDDER	3.47		
OVERALL F&L	1.65		

PRODUCTION					
Milk Kg	Fat Kg	Protein Kg	Solid Kg	Fat %	Prot %
413	30	19	49	0.23	0.08
FERTILITY		CALVING DIFFICULTY			
Calving Interval	Survival	Records	Dairy Heifer Diff	Rel	Risk
-2.3	3.3	0	7.97	63	Moderate
MANAGEMENT		HEALTH			
Milk Speed	Temp	SCC	Mastitis	Lameness	TB
-37.4	-0.39	-0.23	-0.14	-0.11	9.32
		DTRS		HERDS	
		0		0	

SIRE: DENOVO 2800 PRINCE-ET

MS: MELARRY JOSUPER FRAZZLED-ET

MGS: DE-SU FERDINAND 12489-ET

DAM: DENOVO FRAZZLED 8620

MD: DE-SU FERDINAND 5946-ET

MGD: DE-SU HALOGEN 4109-ET

FR1518 DENOVO 18732 HEXAGON-ET

PED

DOB 09/11/2021 | HO 100% | Beta Casein A2/A2 | aAa 3425

HERD BOOK NUMBER
HOL840M003238258763



3RD DAM: Cookiecutter Dta Habitan-ET EX-90



SCAN ME FOR MOST RECENT PROOF



HEALTH



HIGH TYPE SIRE



COMPONENT SPECIALIST



SEXED SEMEN



A2 A2



NEW

EBI SEPT. 24 SOURCE ICBF	REL
EBI 185	55%
Prod. SI	131 75%
Fert. SI	28 37%
Carbon SI	-27 51%
Calv. SI	54 43%
Beef SI	-22 36%
Maint. SI	-11 32%
Mgmt. Si	2 59%
Health SI	30 74%

USA AUG 24			
TPI 2959			
PRODUCTION			
Milk Lbs	938	Daus	0
Fat Lbs	86	Fat %	0.19
Protein Lbs	65	Protein %	0.13
OTHER TRAITS			
DPR	0.6		
Productive Life	5.6		
SCC	2.92		
TYPE			
PTAT	1.38		
Udder Composite	0.80		
Feet & Legs Composite	0.65		
BCS	0.35		

- 1,000 lb Milk bull with high DPR & Prod. Life score
- Going back to Mom Halo/Deillia's
- Overall Type 2.68 and Udder Comp. 2.47
- Adds Teat Length

LINEAR EVALUATION - INTERBULL 2024		-5	+5
STATURE	1.89		
CHEST WIDTH	-0.51		
BODY DEPTH	1.03		
ANGULARITY	1.65		
RUMP ANGLE	1.09		
RUMP WIDTH	0.93		
REAR LEG SET	2.52		
LOCOMOTION	2.11		
FOOT ANGLE	-1.09		
FORE UDDER	3.08		
REAR UDDER	2.8		
UDDER SUPPORT	3.04		
UDDER DEPTH	3.02		
TEAT PLACEMENT	0.77		
TEAT LENGTH	1.36		
BCS	-1.46		
OVERALL TYPE	2.68		
OVERALL UDDER	2.47		
OVERALL F&L	1.62		

PRODUCTION					
Milk Kg	Fat Kg	Protein Kg	Solid Kg	Fat %	Prot %
438	25	20	45	0.12	0.09

FERTILITY		CALVING DIFFICULTY			
Calving Interval	Survival	Records	Dairy Heifer Diff	Rel	Risk
-0.1	2.1	0	6.35	53	Moderate

MANAGEMENT		HEALTH				DTRS
Milk Speed	Temp	SCC	Mastitis	Lameness	TB	0
-31.7	-0.23	-0.37	-0.12	-0.08	8.39	0

SIRE: PINE-TREE GARDNER-ET

MS: PINE-TREE ACURA-ET

MGS: CLEAR-ECHO JED JARED 745-ET

DAM: AOT ACURA HASTEY-ET

MD: AOT JARED HASKEL-ET VG 85

MGD: COOKIECUTTER DTA HABITAN-ET EX90

FR1557 PROGENESIS PERKY

PED

DOB 14/12/2021 | HO 100% | Beta Casein A1/A2 | aAa 423516

HERD BOOK NUMBER
HOLCANM000014226928



GRANDDAM: PROGENESIS YODA PALOMA EX 91



SCAN ME FOR MOST RECENT PROOF



EBI SEPT. 24 SOURCE ICBF	REL
EBI 185	57%
Prod. SI	154 76%
Fert. SI	24 46%
Carbon SI	-31 54%
Calv. SI	35 44%
Beef SI	-25 37%
Maint. SI	-2 33%
Mgmt. SI	1 58%
Health SI	29 73%

USA AUG 24			
TPI 3285			
PRODUCTION			
Milk Lbs	940	Daus	0
Fat Lbs	137	Fat %	0.38
Protein Lbs	62	Protein %	0.12
OTHER TRAITS			
DPR	-0.1		
Productive Life	6.3		
SCC	2.59		
TYPE			
PTAT	1.92		
Udder Composite	2.02		
Feet & Legs Composite	0.28		
BCS	-0.1		

- Top 5 of All Sires Bull list for Milk SI and Milk Solids
- High Ranking Gameday son, + 3285 Gtpi
- MGDam is classified as EX 91
- Super for health and TB resistance

LINEAR EVALUATION - INTERBULL 2024			
		-5	+5
STATURE	1.69		
CHEST WIDTH	-1.77		
BODY DEPTH	0.01		
ANGULARITY	1.29		
RUMP ANGLE	0.49		
RUMP WIDTH	2.9		
REAR LEG SET	0.47		
LOCOMOTION	1.38		
FOOT ANGLE	0.32		
FORE UDDER	2.85		
REAR UDDER	2.91		
UDDER SUPPORT	2.19		
UDDER DEPTH	2.3		
TEAT PLACEMENT	1.19		
TEAT LENGTH	-1.75		
BCS	-1.26		
OVERALL TYPE	1.71		
OVERALL UDDER	1.94		
OVERALL F&L	0.56		

PRODUCTION					
Milk Kg	Fat Kg	Protein Kg	Solid Kg	Fat %	Prot %
500	38	21	58	0.29	0.06
FERTILITY		CALVING DIFFICULTY			
Calving Interval	Survival	Records	Dairy Heifer Diff	Rel	Risk
0.2	2.2	0	8.81	53	Moderate
MANAGEMENT		HEALTH			
Milk Speed	Temp	SCC	Mastitis	Lameness	TB
-37.1	-0.28	-0.38	-0.08	-0.04	6.9
					DTRS
					0
					HERDS
					0

SIRE: RMD-DOTTERER SSI GAMEDAY-ET	MS: PEAK ALTAZAZZLE-ET	MGS: CAL-ROY-AL YODA-ET
DAM: PROGENESIS ZAZZLE PENGUIN	MD: PROGENESIS YODA PALOMA EX 91	MGD: PROGENESIS FORTUNE PALAU VG 87

FR8733 BOGHILL GLAMOUR HAILSTONE ET PED

DOB
11/02/2021

HO 100%

Beta Casein
A2/A2

aAa
243

HERD BOOK NUMBER
HOLGBRM949027115984



Boghill Glamour HAILSTONE-17 Mths



SCAN ME FOR MOST RECENT PROOF



HEALTH



HIGH TYPE SIRE

COMPONENT SPECIALIST



SEXED SEMEN



A2 A2

EBI SEPT. 24 SOURCE ICBF	REL
EBI 225	62%
Prod. SI 136	74%
Fert. SI 67	47%
Carbon SI -26	57%
Calv. SI 39	94%
Beef SI -7	40%
Maint. SI -7	33%
Mgmt. Si 1	58%
Health SI 22	74%

USA AUG 24			
TPI 2902			
PRODUCTION			
Milk Lbs	157	Daus	0
Fat Lbs	109	Fat %	0.40
Protein Lbs	52	Protein %	0.18
OTHER TRAITS			
DPR	-0.6		
Productive Life	4.5		
SCC	2.79		
TYPE			
PTAT	0.72		
Udder Composite	0.99		
Feet & Legs Composite	0.19		
BCS	0.38		

- *Almost 50Kgs of Solids with Double Digit Components*
- *From the Cosmopolitan family*
- *Farmers delighted with his offspring*
- *Tremendous Health SI*

LINEAR EVALUATION - INTERBULL 2024		-5	+5
STATURE	1.77		
CHEST WIDTH	-0.86		
BODY DEPTH	0.39		
ANGULARITY	0.99		
RUMP ANGLE	-0.34		
RUMP WIDTH	1.37		
REAR LEG SET	0.53		
LOCOMOTION	0.85		
FOOT ANGLE	0.8		
FORE UDDER	2.36		
REAR UDDER	2.33		
UDDER SUPPORT	2.42		
UDDER DEPTH	2.79		
TEAT PLACEMENT	0.62		
TEAT LENGTH	-1.79		
BCS	-1.04		
OVERALL TYPE	1.8		
OVERALL UDDER	2.11		
OVERALL F&L	0.68		

PRODUCTION					
Milk Kg	Fat Kg	Protein Kg	Solid Kg	Fat %	Prot %
386	27	19	47	0.2	0.1
FERTILITY		CALVING DIFFICULTY			
Calving Interval	Survival	Records	Dairy Heifer Diff	Rel	Risk
-2.9	2.4	531	6.76	92	Low
MANAGEMENT		HEALTH			
Milk Speed	Temp	SCC	Mastitis	Lameness	TB
-38.6	-0.31	-0.26	-0.1	-0.03	7.67
					DTRS
					0
					HERDS
					0

SIRE: PINE-TREE HEROIC-ET

MS: ABS CRIMSON-ET

MGS: PINE-TREE VERONA-ET

DAM: BOGHILL GLAMOUR CRIMSON V CARL GP 80

MD: GLAMOUR BOGHILL VERONA CARLIN VG 85

MGD: BOGHILL GLAMOUR SUPERSHOT CARL GP 81

ELI003253835796 Beyond Hi-Praise-Et

PED

DOB 28-Jan-23 | HO (100%) | Beta Casein A2/A2 | aAa 324156

HERD BOOK NUMBER
HOL840M003253835796



BEYOND Hi-Praise



SCAN ME FOR MOST RECENT PROOF



EBI SEPT. 24 SOURCE ICBF	REL
EBI 180	53%
Prod. SI 139	72%
Fert. SI 35	35%
Carbon SI -32	49%
Calv. SI 49	42%
Beef SI -25	36%
Maint. SI -13	32%
Mgmt. SI 3	58%
Health SI 24	72%

USA AUG 24			
TPI 3262			
PRODUCTION			
Milk Lbs	1206	Daus	0
Fat Lbs	122	Fat %	0.28
Protein Lbs	71	Protein %	0.12
OTHER TRAITS			
DPR	0.8		
Productive Life	5.6		
SCC	2.63		
TYPE			
PTAT	1.98		
Udder Composite	2.14		
Feet & Legs Composite	0.18		
BCS	0.37		

- Excellent cow family, GtPI 3262
- 1,200 lbs of Milk in U.S with almost 200lbs CFP
- Perfect balance of strength & dairyness
- +3.6 Udder and +3.7 Overall Type Score

LINEAR EVALUATION - INTERBULL 2024			
		-5	+5
STATURE	1.7		
CHEST WIDTH	0.09		
BODY DEPTH	1.27		
ANGULARITY	1.7		
RUMP ANGLE	0.71		
RUMP WIDTH	2.23		
REAR LEG SET	2.44		
LOCOMOTION	2.63		
FOOT ANGLE	-1.38		
FORE UDDER	3.95		
REAR UDDER	4.44		
UDDER SUPPORT	2.63		
UDDER DEPTH	2.34		
TEAT PLACEMENT	1.42		
TEAT LENGTH	-0.56		
BCS	-0.72		
OVERALL TYPE	3.71		
OVERALL UDDER	3.64		
OVERALL F&L	2.12		

PRODUCTION					
Milk Kg	Fat Kg	Protein Kg	Solid Kg	Fat %	Prot %
464	30	20	50	0.19	0.07
FERTILITY		CALVING DIFFICULTY			
Calving Interval	Survival	Records	Dairy Heifer Diff	Rel	Risk
-0.98	1.82	0	5.36	52	Low
MANAGEMENT		HEALTH			
Milk Speed	Temp	SCC	Mastitis	Lameness	TB
-45.79	-0.32	-0.3	-0.13	-0.06	8.95
		DTRS		HERDS	
		0		0	

SIRE: WELCOME-TEL TAOS HAVK-ET

MS: C-HAVEN POSITIVE DELUXE-ET

MGS: S-S-I DELROY BIGGELO-ET

DAM: AOT DELUXE HI-LIGHTED-ET VG 85

MD: AOT BIGGELO HASKEL2-ET VG 87

MGD: AOT JARED HASKEL-ET VG 85

ELI003253835878 Beyond Hi-Power-Et

PED

DOB 14-Feb-23 | HO (100%) | Beta Casein A1/A2 | aAa 243165

HERD BOOK NUMBER
HOL840M003253835878



FOURTH DAM: COOKIECUTTER DTA HABITAN



SCAN ME FOR MOST RECENT PROOF



EBI SEPT. 24 SOURCE ICBF	REL
EBI 167	53%
Prod. SI 136	72%
Fert. SI 24	36%
Carbon SI -35	49%
Calv. SI 54	41%
Beef SI -13	35%
Maint. SI -16	31%
Mgmt. Si -1	58%
Health SI 18	73%

USA AUG 24			
TPI 3223			
PRODUCTION			
Milk Lbs	1064	Daus	0
Fat Lbs	133	Fat %	0.35
Protein Lbs	59	Protein %	0.10
OTHER TRAITS			
DPR	-1		
Productive Life	5.7		
SCC	2.51		
TYPE			
PTAT	1.98		
Udder Composite	1.94		
Feet & Legs Composite	0.43		
BCS	0.44		

- High ranking half brother to Hi-Praise
- MGDam is classified as EX 91
- LPI = 3955, + 9 for Dairy Strength
- Plus 3.7 points for Udder Score - Ireland

LINEAR EVALUATION - INTERBULL 2024		-5	+5
STATURE	1.64		
CHEST WIDTH	0.26		
BODY DEPTH	1.2		
ANGULARITY	1.68		
RUMP ANGLE	-0.71		
RUMP WIDTH	2.87		
REAR LEG SET	1.54		
LOCOMOTION	2.15		
FOOT ANGLE	1.2		
FORE UDDER	4.3		
REAR UDDER	4.35		
UDDER SUPPORT	3.08		
UDDER DEPTH	2.43		
TEAT PLACEMENT	1.25		
TEAT LENGTH	-2.28		
BCS	-0.8		
OVERALL TYPE	3.33		
OVERALL UDDER	3.73		
OVERALL F&L	1.29		

PRODUCTION					
Milk Kg	Fat Kg	Protein Kg	Solid Kg	Fat %	Prot %
532	30	21	51	0.15	0.04
FERTILITY		CALVING DIFFICULTY			
Calving Interval	Survival	Records	Dairy Heifer Diff	Rel	Risk
-0.1	1.8	0	5.15	51	Low
MANAGEMENT		HEALTH			
Milk Speed	Temp	SCC	Mastitis	Lameness	TB
-35.05	-0.32	-0.28	-0.13	-0.02	9.68
		DTRS		HERDS	
		0		0	

SIRE: PEAK POWERSTAR-ET

MS: C-HAVEN POSITIVE DELUXE-ET

MGS: S-S-I DELROY BIGGELO-ET

DAM: AOT DELUXE HI-LIGHTED-ET VG 85

MD: AOT BIGGELO HASKEL2-ET VG 87

MGD: AOT JARED HASKEL-ET VG 85

FR8079 DENOVO 17118 PROVO-ET

PED

DOB
17/08/2020

HO 100%

Beta Casein
A2/A2

aAa

HERD BOOK NUMBER
HOL840M003216859539



Denovo 17118 PROvo-ET - Yearling



SCAN ME FOR MOST RECENT PROOF



HEALTH



HIGH TYPE SIRE



SEXED SEMEN ONLY



ROBOT READY

EBI SEPT. 24 SOURCE ICBF	REL
EBI 208	64%
Prod. SI 147	77%
Fert. SI 58	49%
Carbon SI -27	60%
Calv. SI 40	87%
Beef SI -28	48%
Maint. SI -11	35%
Mgmt. SI 0	59%
Health SI 30	75%

USA AUG 24			
TPI 2854			
PRODUCTION			
Milk Lbs	56	Daus	0
Fat Lbs	99	Fat %	0.38
Protein Lbs	41	Protein %	0.15
OTHER TRAITS			
DPR	0.8		
Productive Life	5.0		
SCC	2.68		
TYPE			
PTAT	0.61		
Udder Composite	0.53		
Feet & Legs Composite	-0.37		
BCS	0.18		

- Prince Son with 52kgs of solids
- Huge fat and protein %
- Robot Ready, shallow Udders, ideal teat placement
- Breeds healthier cows

LINEAR EVALUATION - INTERBULL 2024

		-5	+5
STATURE	1.31		
CHEST WIDTH	-0.2		
BODY DEPTH	0.51		
ANGULARITY	1.09		
RUMP ANGLE	1.18		
RUMP WIDTH	0.92		
REAR LEG SET	-1.84		
LOCOMOTION	1.72		
FOOT ANGLE	1.36		
FORE UDDER	3.08		
REAR UDDER	3.36		
UDDER SUPPORT	2.24		
UDDER DEPTH	2.68		
TEAT PLACEMENT	0.95		
TEAT LENGTH	-0.81		
BCS	-0.64		
OVERALL TYPE	2.28		
OVERALL UDDER	2.35		
OVERALL F&L	1.49		

PRODUCTION					
Milk Kg	Fat Kg	Protein Kg	Solid Kg	Fat %	Prot %
392	32	20	52	0.28	0.1
FERTILITY		CALVING DIFFICULTY			
Calving Interval	Survival	Records	Dairy Heifer Diff	Rel	Risk
-2.2	2.4	100	6.86	76	Moderate
MANAGEMENT		HEALTH			
Milk Speed	Temp	SCC	Mastitis	Lameness	TB
-29.9	-0.27	-0.38	-0.13	-0.05	8.04
				DTRS	
				0	
				HERDS	
				0	

SIRE: DENOVO 2800 PRINCE-ET	MS: ABS CRIMSON-ET	MGS: WA-DEL ABS BOURBON-ET
DAM: DENOVO CRIMSON 2994-ET	MD: ABS BOURBON 5859-ET	MGD: NO-FLA MONARCH BRI 38395-ET VG85

FR7806 WESTCOAST ROCKNROLL

PED

DOB 16/11/2019 | HO 100% | Beta Casein A2/A2 | aAa 435261

HERD BOOK NUMBER
HOLCANM000013442745



Holly McArthur
SEMEX

WESTCOAST ALCOVE RIZA 7512 EX-92 Dam



SCAN ME FOR MOST RECENT PROOF

HEALTH HIGH TYPE SIRE SEXED SEMEN A2 A2

EBI SEPT. 24 SOURCE ICBF	REL
EBI 219	69%
Prod. SI 129	90%
Fert. SI 104	47%
Carbon SI -26	66%
Calv. SI 34	92%
Beef SI -20	50%
Maint. SI -19	38%
Mgmt. SI -9	59%
Health SI 26	74%

USA AUG 24			
TPI 2864			
PRODUCTION			
Milk Lbs	699	Daus	156
Fat Lbs	82	Fat %	0.21
Protein Lbs	51	Protein %	0.11
OTHER TRAITS			
DPR	1.6		
Productive Life	4.6		
SCC	2.83		
TYPE			
PTAT	0.87		
Udder Composite	1.48		
Feet & Legs Composite	0.2		
BCS	1.59		

- *Appealing sire with power & strength*
- *Maintains good Body Condition Score, +2.58*
- *Excellent fertility in U.S. & Canada*
- *Excellent Locomotion score, +4*

LINEAR EVALUATION - INTERBULL 2024	
STATURE	1.25
CHEST WIDTH	2.54
BODY DEPTH	0.82
ANGULARITY	-0.46
RUMP ANGLE	-0.17
RUMP WIDTH	1.47
REAR LEG SET	-2.66
LOCOMOTION	4.11
FOOT ANGLE	2.55
FORE UDDER	3.91
REAR UDDER	2.37
UDDER SUPPORT	2.25
UDDER DEPTH	3.4
TEAT PLACEMENT	2.46
TEAT LENGTH	-0.95
BCS	2.58
OVERALL TYPE	3.21
OVERALL UDDER	2.57
OVERALL F&L	2.75

PRODUCTION					
Milk Kg	Fat Kg	Protein Kg	Solid Kg	Fat %	Prot %
559	27	21	48	0.08	0.03
FERTILITY		CALVING DIFFICULTY			
Calving Interval	Survival	Records	Dairy Heifer Diff	Rel	Risk
-5.2	3.1	308	7.1	81	Moderate
MANAGEMENT		HEALTH			
Milk Speed	Temp	SCC	Mastitis	Lameness	TB
-23.1	-0.45	-0.2	-0.13	-0.09	7.95
		DTRS		HERDS	
		0		0	

SIRE: PROGNEISIS PYRAMID	MS: WESTCOAST ALCOVE	MGS: IHG MONTANA-ET
DAM: WESTCOAST ALCOVE RIZA 7512 EX92	MD: WESTCOAST MONTANA RIZA 4700 VG 87	MGD: WESTCOAST SUPERSHOT RIZA 2951 GP 80

FR4187 WESTCOAST PERSEUS

PED

DOB 05/12/2015 | HO 100% | Beta Casein A2/A2 | aAa 126345 | HH5C, HMWC

HERD BOOK NUMBER
HOLCANM000012283318



DAU: TOBERMARTIN PERSEUS ROXY 1695 VG86



SCAN ME FOR MOST RECENT PROOF



EBI SEPT. 24 SOURCE ICBF	REL
EBI 226	97%
Prod. SI	135 99%
Fert. SI	72 95%
Carbon SI	-28 98%
Calv. SI	39 99%
Beef SI	-3 99%
Maint. SI	-4 99%
Mgmt. SI	2 74%
Health SI	13 95%

USA AUG 24			
TPI 2758			
PRODUCTION			
Milk Lbs	645	Daus	17437
Fat Lbs	53	Fat %	0.11
Protein Lbs	48	Protein %	0.11
OTHER TRAITS			
DPR	2.7		
Productive Life	4.3		
SCC	2.74		
TYPE			
PTAT	0.68		
Udder Composite	1.05		
Feet & Legs Composite	0.09		
BCS	-0.13		

- Proven bull with excellent udders
- Easy calving for Heifers
- Over 5,000 daughters milking in Ireland
- Breeds stylish cows with production and fertility

LINEAR EVALUATION - INTERBULL 2024

		-5			+5
STATURE	1.28				
CHEST WIDTH	-0.81				
BODY DEPTH	0.26				
ANGULARITY	1.01				
RUMP ANGLE	-0.75				
RUMP WIDTH	0.54				
REAR LEG SET	-3.26				
LOCOMOTION	-0.05				
FOOT ANGLE	2.25				
FORE UDDER	3.17				
REAR UDDER	3.16				
UDDER SUPPORT	3.4				
UDDER DEPTH	2.85				
TEAT PLACEMENT	2.85				
TEAT LENGTH	-1.32				
BCS	-0.6				
OVERALL TYPE	2.11				
OVERALL UDDER	2.53				
OVERALL F&L	0.27				

PRODUCTION					
Milk Kg	Fat Kg	Protein Kg	Solid Kg	Fat %	Prot %
602	22	25	46	-0.03	0.07
FERTILITY		CALVING DIFFICULTY			
Calving Interval	Survival	Records	Dairy Heifer Diff	Rel	Risk
-3.3	2.5	10289	5.24	99	Low
MANAGEMENT		HEALTH			
Milk Speed	Temp	SCC	Mastitis	Lameness	TB
-19.3	-0.12	-0.33	-0.07	0.02	9.58

SIRE: SANDY-VALLEY-I PENMANSHIP	MS: VAL-BISSON DOORMAN EX 90	MGS: ROYLANE SOCRA ROBUST-ET VG 88
DAM: VIEW-HOME DRMAN WSCON SIN-ET VG 88	MD: PINE-TREE 2149ROBST 4846-ET VG 87	MGD: PINE-TREE ZENITH SHEEN VG 87

FR4368 WESTCOAST YAMASKA

PED

DOB 09/03/2016 | HO 100% | Beta Casein A2/A2 | aAa 432516

HERD BOOK NUMBER
HOLCANM000012371165



Lucinda Morgan



DAU: Willsbro Yamaska Amber 169 VG87 2yr



SCAN ME FOR MOST
RECENT PROOF



HEALTH



HIGH
TYPE
SIRE



SEXED
SEMEN



A2
A2



ROBOT
READY

EBI SEPT. 24 SOURCE ICBF	REL
EBI 163	96%
Prod. SI	125 99%
Fert. SI	36 93%
Carbon SI	-22 97%
Calv. SI	33 99%
Beef SI	-28 99%
Maint. SI	-2 98%
Mgmt. SI	1 72%
Health SI	19 92%

USA AUG 24			
TPI 2817			
PRODUCTION			
Milk Lbs	649	Daus	11250
Fat Lbs	76	Fat %	0.20
Protein Lbs	62	Protein %	0.16
OTHER TRAITS			
DPR	-1.1		
Productive Life	3.7		
SCC	2.87		
TYPE			
PTAT	1.63		
Udder Composite	0.88		
Feet & Legs Composite	1.23		
BCS	0.65		

- Household name
- Breeds cows with power and style, robot ready
- Real improver of fat and protein percentage
- + 2 for both Udder and Overall Type Score

LINEAR EVALUATION - INTERBULL 2024		-5	+5
STATURE	1.41		
CHEST WIDTH	0.11		
BODY DEPTH	0.85		
ANGULARITY	1.05		
RUMP ANGLE	-0.94		
RUMP WIDTH	4.09		
REAR LEG SET	-2.87		
LOCOMOTION	1.75		
FOOT ANGLE	2.43		
FORE UDDER	2.38		
REAR UDDER	3.24		
UDDER SUPPORT	1.39		
UDDER DEPTH	1.09		
TEAT PLACEMENT	1.31		
TEAT LENGTH	0.25		
BCS	-0.62		
OVERALL TYPE	2		
OVERALL UDDER	2.03		
OVERALL F&L	1.21		

PRODUCTION					
Milk Kg	Fat Kg	Protein Kg	Solid Kg	Fat %	Prot %
329	23	18	41	0.17	0.11
FERTILITY		CALVING DIFFICULTY			
Calving Interval	Survival	Records	Dairy Heifer Diff	Rel	Risk
-1.3	1.6	8469	7.75	99	Moderate
MANAGEMENT		HEALTH			
Milk Speed	Temp	SCC	Mastitis	Lameness	TB
-21.3	-0.15	-0.3	-0.08	-0.03	8.6

SIRE: SANDY-VALLEY AFTERBURNER-ET

MS: WOODCREST MOGUL YODER-ET

MGS: BADGER-BLUFF FANNY FREDDIE

DAM: MORNINGVIEW YODER 4342-ET VG 85

MD: MORNINGVIEW FREDDIE MIMI-ET EX90

MGD: MORNINGVIEW SHOTTLE MAUI-ET EX 90

FR9734 WESTCOAST EARLYBIRD

PED

DOB 15/07/2020 | HO 100% | Beta Casein A2/A2 | aAa 426351

HERD BOOK NUMBER
HOLCANM000013636769



WESTCOAST EARLYBIRD



SCAN ME FOR MOST RECENT PROOF



EBI SEPT. 24 SOURCE ICBF	REL
EBI 199	61%
Prod. SI	124 77%
Fert. SI	76 47%
Carbon SI	-28 57%
Calv. SI	39 69%
Beef SI	-13 40%
Maint. SI	-14 34%
Mgmt. SI	-2 58%
Health SI	18 73%

USA AUG 24			
TPI 3198			
PRODUCTION			
Milk Lbs	1090	Daus	10
Fat Lbs	116	Fat %	0.28
Protein Lbs	64	Protein %	0.11
OTHER TRAITS			
DPR	0.8		
Productive Life	5.4		
SCC	2.79		
TYPE			
PTAT	1.61		
Udder Composite	2.27		
Feet & Legs Composite	0.65		
BCS	0.12		

- International sire of sons
- First daughters in milk are promising
- Medium sized with great udder promise
- Einstein Son that "breeds the right kind"

LINEAR EVALUATION - INTERBULL 2024		-5	+5
STATURE	0.68		
CHEST WIDTH	-0.65		
BODY DEPTH	-0.26		
ANGULARITY	0.7		
RUMP ANGLE	0.08		
RUMP WIDTH	0.61		
REAR LEG SET	-0.86		
LOCOMOTION	2.08		
FOOT ANGLE	1.15		
FORE UDDER	3.46		
REAR UDDER	3.28		
UDDER SUPPORT	2.58		
UDDER DEPTH	2.51		
TEAT PLACEMENT	1.29		
TEAT LENGTH	-1.23		
BCS	-0.47		
OVERALL TYPE	2.5		
OVERALL UDDER	2.61		
OVERALL F&L	1.43		

PRODUCTION					
Milk Kg	Fat Kg	Protein Kg	Solid Kg	Fat %	Prot %
429	28	18	46	0.18	0.05
FERTILITY		CALVING DIFFICULTY			
Calving Interval	Survival	Records	Dairy Heifer Diff	Rel	Risk
-2.2	3.9	13	6.51	63	Moderate
MANAGEMENT		HEALTH			
Milk Speed	Temp	SCC	Mastitis	Lameness	TB
-37.6	-0.37	-0.16	-0.07	-0.02	6.67

SIRE: SILVERRIDGE V EINSTEIN

MS: S-S-I PR RENEGADE-ET

MGS: ENDCO SUPERHERO-ET

DAM: DAM: FLY-HIGHER RNEGADE MARCH-ET GP84 2YR

MD: MD: FLY-HIGHER HERO MISS-ET VG86

MGD: FLY-HIGHER RUBI HAPPY-ET VG86

FR8697 WESTCOAST MIDMARCH

PED

DOB 29/06/2020 | HO 100% | Beta Casein A2/A2 | aAa 243615

HERD BOOK NUMBER
HOLCANM000013636750



WESTCOAST MIDMARCH



SCAN ME FOR MOST RECENT PROOF



EBI SEPT. 24 SOURCE ICBF	REL
EBI 158	63%
Prod. SI	122 76%
Fert. SI	15 47%
Carbon SI	-30 59%
Calv. SI	48 91%
Beef SI	-22 42%
Maint. SI	-10 36%
Mgmt. SI	2 60%
Health SI	33 74%

USA AUG 24			
TPI 3101			
PRODUCTION			
Milk Lbs	538	Daus	0
Fat Lbs	107	Fat %	0.33
Protein Lbs	57	Protein %	0.15
OTHER TRAITS			
DPR	0.5		
Productive Life	4		
SCC	2.79		
TYPE			
PTAT	2.18		
Udder Composite	2.37		
Feet & Legs Composite	0.84		
BCS	1.01		

- Half Brother to Earlybird, Zasberilla son from a Renegade Dam
- Over \$3,100 Gtpi with 164 CFP & + DPR
- +3.3 for Udders & +3.1 Overall Type Score
- Easy calving for Heifers

LINEAR EVALUATION - INTERBULL 2024		-5	+5
STATURE	1.04		
CHEST WIDTH	0.22		
BODY DEPTH	0.6		
ANGULARITY	0.55		
RUMP ANGLE	-0.63		
RUMP WIDTH	0.21		
REAR LEG SET	-0.68		
LOCOMOTION	2.52		
FOOT ANGLE	0.76		
FORE UDDER	4.46		
REAR UDDER	3.48		
UDDER SUPPORT	2.98		
UDDER DEPTH	3.85		
TEAT PLACEMENT	1.4		
TEAT LENGTH	-2.98		
BCS	0.14		
OVERALL TYPE	3.15		
OVERALL UDDER	3.28		
OVERALL F&L	1.56		

PRODUCTION					
Milk Kg	Fat Kg	Protein Kg	Solid Kg	Fat %	Prot %
340	27	16	43	0.23	0.08
FERTILITY		CALVING DIFFICULTY			
Calving Interval	Survival	Records	Dairy Heifer Diff	Rel	Risk
1.2	2.5	265	4.85	86	Low
MANAGEMENT		HEALTH			
Milk Speed	Temp	SCC	Mastitis	Lameness	TB
-26.7	-0.18	-0.27	-0.13	-0.12	7.36

SIRE: CLAYNOOK ZASBERILLA

MS: S-S-I PR RENEGADE-ET

MGS: ENDCO SUPERHERO-ET

DAM: FLY-HIGHER RNEGADE MARCH-ET GP84 2YR

MD: FLY-HIGHER HERO MISS-ET VG86

MGD: FLY-HIGHER RUBI HAPPY-ET VG86

FR9881 (IG)LISDUFF NAPOLEON ET

PED

DOB
12/02/2023

HO 100%

Beta Casein
A1/A2

aAa
Arachnomelia Free

HERD BOOK NUMBER
HOLIRLM224508748032



Bred by John J O'Sullivan, Whitechurch, Co.Cork

Dam: LISDUFF LETALE 55 VG 85



SCAN ME FOR MOST RECENT PROOF



EBI SEPT. 24 SOURCE ICBF	REL
EBI 302	57%
Prod. SI	119 73%
Fert. SI	131 39%
Carbon SI	-11 53%
Calv. SI	57 53%
Beef SI	-15 45%
Maint. SI	-7 36%
Mgmt. SI	1 60%
Health SI	27 75%

DAM YIELDS	Milk KGS	Fat KGS	PTN KGS	Solids	Fat %	PTN %
Highest Lact No. 1	6306	292	234	526	4.63	3.71
Average Across Lifetime	6306	292	234	526	4.63	3.71
Lifetime Production: 1 Lact	6306	292	234	526	4.63	3.71

- Tremendous Cow family as recently viewed in Lisduff
- 10 Gen VG/EX from the Letale family
- High EBI with good balance between milk and fertility
- +2.5 for Udders & +2.7 Overall Type Score

LINEAR EVALUATION - INTERBULL 2024		-5	+5
STATURE	1.86		
CHEST WIDTH	0.18		
BODY DEPTH	-0.74		
ANGULARITY	-0.37		
RUMP ANGLE	-0.65		
RUMP WIDTH	0.77		
REAR LEG SET	-2.86		
LOCOMOTION	2.15		
FOOT ANGLE	2.74		
FORE UDDER	4.18		
REAR UDDER	2.08		
UDDER SUPPORT	2.01		
UDDER DEPTH	4.69		
TEAT PLACEMENT	-0.01		
TEAT LENGTH	-2.19		
BCS	1.04		
OVERALL TYPE	2.68		
OVERALL UDDER	2.45		
OVERALL F&L	1.56		

PRODUCTION					
Milk Kg	Fat Kg	Protein Kg	Solid Kg	Fat %	Prot %
275	21	17	38	0.17	0.13

FERTILITY		CALVING DIFFICULTY			
Calving Interval	Survival	Records	Dairy Heifer Diff	Rel	Risk
-7.5	3	0	4.46	63	Low

MANAGEMENT		HEALTH				DTRS
Milk Speed	Temp	SCC	Mastitis	Lameness	TB	HERDS
-32	-0.25	-0.24	-0.13	-0.05	7.23	0

SIRE: PROGGENESIS NAPAVALLEY

MS: FLY-HIGHER MOD CADE-ET

MGS: DE-SU HAGLEY 12144-ET

DAM: LISDUFF LETALE 55 VG 85

MD: LISDUFF LETALE 42 5081 VG 85

MGD: LISDUFF LETALE 15 ET EX 90 4E

FR7929 (IG)TANKARDSROCK TEAK

PED

DOB
04/10/2020

HERD BOOK NUMBER
HOLIRLM218058631394

HO 94%, FR 6% | Beta Casein A1/A2 | aAa 432516



Bred by Stephen Mcshane, Kilkierley, Dundalk Co Louth
Dam Tankardsrock LHZ Twinkle VG88



SCAN ME FOR MOST RECENT PROOF



FR9316 (IG)DUNGRANGE DAN

PED

DOB
15/02/2022

HERD BOOK NUMBER
HOLIRLM224346475963

HO 91%, FR 9% | Beta Casein A2/A2 | aAa Arachnomelia Free | HH5C



Bred by Donal Dunne, Grange Castletown, Navan, Co Meath
Dam: Dungrange Perseus Brona VG85



SCAN ME FOR MOST RECENT PROOF



EBI SEPT. 24 SOURCE ICBF REL		LINEAR EVALUATION - INTERBULL 2024	
EBI	348 71%	STATURE	-0.3
Prod. SI	108 83%	CHEST WIDTH	-0.59
Fert. SI	151 47%	BODY DEPTH	-1.19
Carbon SI	1 69%	ANGULARITY	0.01
Calv. SI	48 98%	RUMP ANGLE	3.28
Beef SI	-9 75%	RUMP WIDTH	0.12
Maint. SI	9 52%	REAR LEG SET	2.31
Mgmt. SI	4 65%	LOCOMOTION	0.23
Health SI	37 79%	FOOT ANGLE	-1.89
		FORE UDDER	-0.78
		REAR UDDER	-0.03
		UDDER SUPPORT	0.39
		UDDER DEPTH	-1.07
		TEAT PLACEMENT	0.11
		TEAT LENGTH	-1.83
		BCS	-0.66
		OVERALL TYPE	-0.46
		OVERALL UDDER	-0.37
		OVERALL F&L	0.33

DAM YIELDS	Milk KGS	Fat KGS	PTN KGS	Solids	Fat %	PTN %
Highest Lact No. 5	8275	396	323	719	4.79	3.91
Average Across Lifetime	7091	341	280	621	4.84	3.96
Lifetime Production: 7 Lact	49638	2390	1957	4347	4.81	3.94

PRODUCTION					
Milk Kg	Fat Kg	Protein Kg	Solid Kg	Fat %	Prot %
204	20	14	35	0.21	0.12

FERTILITY		CALVING DIFFICULTY	
Calving Interval	Survival	Records	Dairy Heifer Diff
-8.8	3.2	7714	6.71
		99	Low

MANAGEMENT		HEALTH		DTRS
Milk Speed	Temp	SCC	Mastitis	Lameness
-13.1	-0.01	-0.16	-0.07	-0.1
		3		0

- Top 5 on the Active Bull list for EBI
- Number 1 on the Active Bull list for Health Sub Index
- Dam produced over 710kgs of Milk solids in 5th lactation
- Dam is classified as VG 88

SIRE: (IG) BALLINTOSIG RING 0	MS: (IG) LAURAGH EVERT	MGS: MORNINGVIEW LEGEND-ET VG 88
DAM: TANKARDSROCK LHZ TWINKLE VG 88	MD: TANKARDSROCK VGE TWINKLE	MGD: TANKARDSROCK RUU TWINKLE

EBI SEPT. 24 SOURCE ICBF REL		LINEAR EVALUATION - INTERBULL 2024	
EBI	315 67%	STATURE	0.17
Prod. SI	124 82%	CHEST WIDTH	-0.43
Fert. SI	128 45%	BODY DEPTH	-0.31
Carbon SI	-3 64%	ANGULARITY	-0.16
Calv. SI	52 91%	RUMP ANGLE	-0.65
Beef SI	-13 52%	RUMP WIDTH	-1.67
Maint. SI	7 48%	REAR LEG SET	-2.23
Mgmt. SI	4 60%	LOCOMOTION	1.15
Health SI	18 75%	FOOT ANGLE	1.66
		FORE UDDER	2.33
		REAR UDDER	1.83
		UDDER SUPPORT	0.25
		UDDER DEPTH	1.55
		TEAT PLACEMENT	-1.01
		TEAT LENGTH	-1.09
		BCS	0.53
		OVERALL TYPE	0.65
		OVERALL UDDER	1.17
		OVERALL F&L	0.36

DAM YIELDS	Milk KGS	Fat KGS	PTN KGS	Solids	Fat %	PTN %
Highest Lact No. 2	7561	309	274	583	4.08	3.63
Average Across Lifetime	7054	295	242	537	4.18	3.42
Lifetime Production: 3 Lact	21161	885	726	1611	4.18	3.43

PRODUCTION					
Milk Kg	Fat Kg	Protein Kg	Solid Kg	Fat %	Prot %
221	26	15	41	0.28	0.13

FERTILITY		CALVING DIFFICULTY	
Calving Interval	Survival	Records	Dairy Heifer Diff
-7	3.1	285	4.25
		76	Low

MANAGEMENT		HEALTH		DTRS
Milk Speed	Temp	SCC	Mastitis	Lameness
-16.5	-0.03	-0.16	-0.07	-0.04
		7.12		0

- Easy calving for Heifers
- Top 5 on the Active Bull list for Milk SI and Milk Solids
- Dam and MGDam both classified VG
- Improves body condition score

SIRE: (IG) BALLYCARNEY DENMAN	MS: WESTCOAST PERSEUS VG 87	MGS: (IG) ALLENWOOD BUSTER
DAM: DUNGRANGE PERSEUS BRONA VG 85	MD: DUNGRANGE BUSTER BRONA VG 85	MGD: DUNGRANGE HDJ BRONA

The Dairybreiz Family



Lisduff Dairybreiz 5.

The Dairybreiz Family has an extremely impressive lineage going all the way back to 1995, when the the Hairybreiz progeny group were the stars of the show at the bi-annual progeny group display, organised by the Oger AI company in Blain, France. Only a few months prior to this, John O'Sullivan had been offered three embryos from his dam, the French cow Dairybreiz EX90.

The purchase of the embryos resulted in two heifer calves – the genesis of the Dairybreiz family at Lisduff. This family has bred great cows' generation after generation, consistently delivering cows with wide open chests and superb udders. At Lisduff, Dairybreiz 188, the dam of C Breiz, is fully expected to be the next generation of EX when she calves for the third time. She is sired by the Canadian bull, Praser who delivers high solids and production. The Grand dam of C Breiz, Dairybreiz 147 VG88, sired by the high protein French sire, Jetstream, comes backed by two generations of high longevity bulls in the form of McCormick and Ramos.

Therefore, it is no surprise that she has **produced almost 3,000 Kg of Milk Solids in her first 4 lactations, averaging 3.9% Protein.** Overall, the pedigree backing Lisduff C Breiz is the complete package of Production, Conformation, and Longevity.

FR9178 (IG) LISDUFF C BREIZ PED

DOB: 16/03/2022 | HERD BOOK NUMBER: HOLIRLM224508737520

HO 100% | Beta Casein A2/A2 | aAa Arachnomelia Free



Bred by John J O'Sullivan, Whitechurch, Co Cork
Lisduff Dairybreiz 95 EX91 2E - 3rd Dam of Lisduff C Breiz

SCAN ME FOR MOST RECENT PROOF

HEALTH | HIGH TYPE SIRE | SEXED SEMEN | A2 A2 | NEW

EBI SEPT. 24 SOURCE ICBF	REL	LINEAR EVALUATION - INTERBULL 2024					
EBI 216	64%	STATURE	1.58				
Prod. SI 116	81%	CHEST WIDTH	1.61				
Fert. SI 89	49%	BODY DEPTH	1.11				
Carbon SI -14	62%	ANGULARITY	0.27				
Calv. SI 40	60%	RUMP ANGLE	2.18				
Beef SI -11	49%	RUMP WIDTH	2.49				
Maint. SI -2	45%	REAR LEG SET	1.07				
Mgmt. SI -2	63%	LOCOMOTION	1.72				
Health SI -1	78%	FOOT ANGLE	0.4				
		FORE UDDER	3.68				
		REAR UDDER	2.31				
		UDDER SUPPORT	2.56				
		UDDER DEPTH	3.27				
		TEAT PLACEMENT	-0.1				
		TEAT LENGTH	0.22				
		BCS	1.06				
		OVERALL TYPE	2.13				
		OVERALL UDDER	2.25				
		OVERALL F&L	1.27				

PRODUCTION					
Milk Kg	Fat Kg	Protein Kg	Solid Kg	Fat %	Prot %
287	20	17	37	0.14	0.12

FERTILITY		CALVING DIFFICULTY			
Calving Interval	Survival	Records	Dairy Heifer Diff	Rel	Risk
-4.5	2.6	0	5.35	70	Low

MANAGEMENT		HEALTH				DTRS
Milk Speed	Temp	SCC	Mastitis	Lameness	TB	
-29.2	-0.31	-0.1	-0.02	0	9.96	0

- Cade son from the Hairy Briez family at Lisduff
- VG 87 Dam, VG 88 MGDam with an EX91 3rd dam
- Dam produced over 3.73% protein
- Balanced breeding, maintains good Body Condition

SIRE: FLY-HIGHER MOD CADE-ET	MS: VH PRASER	MGS: JETSTREAM
DAM: LISDUFF DAIRYBREIZ 188 VG 87	MD: LISDUFF DAIRYBREIZ 147 VG 88	MGD: LISDUFF DAIRYBREIZ 95 EX 91 2E

FR7910 (IG) BALLYELLY CHILLI PED

DOB: 01/03/2021 | HERD BOOK NUMBER: HOLIRLM219965852644

HO 100% | Beta Casein A2/A2 | aAa 243561



Bred by Trevor Lockhart, Ramelton, Letterkenny, Co Donegal
Family Of Chilli: Monamore Durham Raven Ex93

SCAN ME FOR MOST RECENT PROOF

HEALTH | HIGH TYPE SIRE | EASY CALVING SIRE | A2 A2 | SEXED SEMEN

EBI SEPT. 24 SOURCE ICBF	REL	LINEAR EVALUATION - INTERBULL 2024					
EBI 257	69%	STATURE	-0.06				
Prod. SI 107	82%	CHEST WIDTH	0.58				
Fert. SI 112	49%	BODY DEPTH	-0.12				
Carbon SI -15	66%	ANGULARITY	-0.19				
Calv. SI 49	96%	RUMP ANGLE	0.09				
Beef SI -11	58%	RUMP WIDTH	0.57				
Maint. SI -4	46%	REAR LEG SET	0.8				
Mgmt. SI -4	63%	LOCOMOTION	1.02				
Health SI 24	79%	FOOT ANGLE	0.01				
		FORE UDDER	1.69				
		REAR UDDER	1.16				
		UDDER SUPPORT	1.76				
		UDDER DEPTH	1.96				
		TEAT PLACEMENT	0.25				
		TEAT LENGTH	-0.29				
		BCS	0.73				
		OVERALL TYPE	1.61				
		OVERALL UDDER	1.61				
		OVERALL F&L	0.76				

PRODUCTION					
Milk Kg	Fat Kg	Protein Kg	Solid Kg	Fat %	Prot %
475	16	20	36	-0.04	0.06

FERTILITY		CALVING DIFFICULTY			
Calving Interval	Survival	Records	Dairy Heifer Diff	Rel	Risk
-5.9	3	681	4.9	91	Low

MANAGEMENT		HEALTH				DTRS
Milk Speed	Temp	SCC	Mastitis	Lameness	TB	
-25.3	-0.33	-0.19	-0.06	-0.07	6.28	0

- Easy calving Chilton son, from the Raven cow family
- 9 generations VG/EX
- Great balance of production and fertility
- Superb offspring both stylish and powerful

SIRE: PEAK CHILTON-ET	MS: BALLYCAIRN CORINTHIAN	MGS: MOUNTFIELD SSI DCY MOGUL-ET EX 93
DAM: ARDNASALEM CORINTHIAN RAVEN ET EX 90	MD: MONAMORE RAVEN 27 ET EX 91 2E	MGD: MONAMORE MCL RAVEN VG 86

FR7905 (IG) BUNACLOY ALIBI PED

DOB: 14/02/2021 | HERD BOOK NUMBER: HOLIRLM217146724259

HO 100% | Beta Casein A1/A2 | aAa



Bred by Mike Magan, Longford, Co Longford
KHW Regiment Apple Red ET, Same Family as Alibi

SCAN ME FOR MOST RECENT PROOF

HEALTH | HIGH TYPE SIRE | EASY CALVING SIRE

EBI SEPT. 24 SOURCE ICBF	REL	LINEAR EVALUATION - INTERBULL 2024					
EBI 188	70%	STATURE	1.49				
Prod. SI 104	82%	CHEST WIDTH	0.1				
Fert. SI 71	49%	BODY DEPTH	0.8				
Carbon SI -18	67%	ANGULARITY	0.58				
Calv. SI 26	96%	RUMP ANGLE	0.88				
Beef SI -13	61%	RUMP WIDTH	1.01				
Maint. SI -3	52%	REAR LEG SET	-0.93				
Mgmt. SI 2	65%	LOCOMOTION	2.85				
Health SI 19	78%	FOOT ANGLE	0.87				
		FORE UDDER	3.25				
		REAR UDDER	2.39				
		UDDER SUPPORT	3				
		UDDER DEPTH	3.56				
		TEAT PLACEMENT	0.26				
		TEAT LENGTH	0.14				
		BCS	0.48				
		OVERALL TYPE	2.71				
		OVERALL UDDER	2.73				
		OVERALL F&L	1.95				

PRODUCTION					
Milk Kg	Fat Kg	Protein Kg	Solid Kg	Fat %	Prot %
298	21	15	36	0.16	0.08

FERTILITY		CALVING DIFFICULTY			
Calving Interval	Survival	Records	Dairy Heifer Diff	Rel	Risk
-3.9	1.7	769	5.13	91	Low

MANAGEMENT		HEALTH				DTRS
Milk Speed	Temp	SCC	Mastitis	Lameness	TB	
-21.3	-0.12	-0.17	-0.13	-0.05	8.49	0

- Easy calving for Heifers
- + 2.7 for both Udder and Overall Type Score
- Great locomotion score of 2.85
- Praser son

SIRE: VH PRASER	MS: VIEW-HOME MONTEREY-ET	MGS: VAL-BISSON DOORMAN EX 90
DAM: BUNACLOY V-H MONTEREY ALIBI ET GP 82	MD: BUNACLOY V-B DOORMAN ALIOLI ET VG 88	MGD: WEEPINGASH JASPER APPOINT ET EX 93 2E

FR9842 (IG)BALLYDEHOB RINGO

PED

DOB 12/10/2022 | HO 97%, FR 3% | Beta Casein A1/A2 | aAa

HERD BOOK NUMBER
HOLIRLM224529752742

Bred by Robert Shannon, Ballydehob, Co Cork



Ballydehob Trixie OJ, 4th Dam EX 94 (Left) - Ireland's Top Lifetime Production Cow, BALLYDEHOB YAMASK TRIXIE Dam EX 90 (Right)



SCAN ME FOR MOST RECENT PROOF



HEALTH



FERTILITY IMPROVER



HIGH TYPE SIRE



SEXED SEMEN



NEW

EBI	SEPT. 24 SOURCE	ICBF	REL
331	65%		
Prod. SI	114	82%	
Fert. SI	130	49%	
Carbon SI	-6	62%	
Calv. SI	52	60%	
Beef SI	1	49%	
Maint. SI	0	46%	
Mgmt. SI	3	64%	
Health SI	38	78%	

DAM YIELDS	Milk KGS	Fat KGS	PTN KGS	Solids	Fat %	PTN %
Highest Lact No. 3	9510	517	356	873	5.44	3.74
Average Across Lifetime	9033	469	336	806	5.19	3.72
Lifetime Production: 3 Lact	27100	1408	1009	2417	5.2	3.72

- Outcross pedigree with 37 Kgs of Solids
- 8 Gen VG/EX from the Trixie family - Ballydehob
- 4th Dam - 14 lacts, produced 11809 kgs of solids to date
- Top Sire to increase TB resistance

LINEAR EVALUATION - INTERBULL 2024		-5	+5
STATURE	0.89		
CHEST WIDTH	0.06		
BODY DEPTH	-0.17		
ANGULARITY	0.37		
RUMP ANGLE	1.16		
RUMP WIDTH	0.31		
REAR LEG SET	-0.12		
LOCOMOTION	1.34		
FOOT ANGLE	0.89		
FORE UDDER	2.07		
REAR UDDER	1.61		
UDDER SUPPORT	-0.27		
UDDER DEPTH	0.86		
TEAT PLACEMENT	-0.25		
TEAT LENGTH	-1.15		
BCS	0.08		
OVERALL TYPE	0.52		
OVERALL UDDER	0.74		
OVERALL F&L	0.98		

PRODUCTION					
Milk Kg	Fat Kg	Protein Kg	Solid Kg	Fat %	Prot %
170	23	14	37	0.27	0.14
FERTILITY		CALVING DIFFICULTY			
Calving Interval	Survival	Records	Dairy Heifer Diff	Rel	Risk
-7.4	3	0	6.24	65	Low
MANAGEMENT		HEALTH			
Milk Speed	Temp	SCC	Mastitis	Lameness	TB
-5.8	0.02	-0.19	-0.13	-0.13	4.94
					DTRS
					0
					HERDS
					0

SIRE: (IG) BALLINTOSIG RING O	MS: WESTCOAST YAMASKA VG 86	MGS: PLAIN-KNOLL KING ROYAL-ET
DAM: BALLYDEHOB YAMASK TRIXIE EX 90	MD: BALLYDEHOB KROYAL TRIXIE EX 92 3E	MGD: BALLYDEHOB TRIXI GZY EX 90

FR9289 (IG) JOHNSWELL RORY PED

DOB
06/02/2022

HERD BOOK NUMBER
HOLIRLM217088671347

HO 94%, Beta Casein aAa
FR 6% A2/A2 Arachnomelia Free HH3C



Bred by Fintan W Flanagan, Johnswell, Co Kilkenny

DAM: JOHNSWELL FR2314 BEAUTY 1027 EX 90



SCAN ME FOR MOST RECENT PROOF

HEALTH FERTILITY IMPROVER HIGH TYPE SIRE SEXED SEMEN
A2 A2 NEW

FR9124 (IG) BALMLAG LEDGER PED

DOB
23/01/2022

HERD BOOK NUMBER
HOLIRLM212228032155

HO 88%, Beta Casein aAa
FR 12% A1/A2 432516



Bred by Alan Farrell, Churchtown, Mallow, Co Cork

Dam, BALMLAG FR4513 IVY 1909 VG85



SCAN ME FOR MOST RECENT PROOF

EASY CALVING SIRE SEXED SEMEN

EBI SEPT. 24 SOURCE ICBF	REL	LINEAR EVALUATION - INTERBULL 2024									
EBI 323	66%	STATURE	0.28								
Prod. SI	125	81%	CHEST WIDTH	0.38							
Fert. SI	132	48%	BODY DEPTH	-0.85							
Carbon SI	-11	62%	ANGULARITY	-0.22							
Calv. SI	51	87%	RUMP ANGLE	-0.56							
Beef SI	3	50%	RUMP WIDTH	0.46							
Maint. SI	1	39%	REAR LEG SET	0.24							
Mgmt. SI	1	59%	LOCOMOTION	1.36							
Health SI	20	74%	FOOT ANGLE	0.91							
			FORE UDDER	0.53							
			REAR UDDER	0.84							
			UDDER SUPPORT	-1.16							
			UDDER DEPTH	0.74							
			TEAT PLACEMENT	-1.31							
			TEAT LENGTH	-1.35							
			BCS	0.78							
			OVERALL TYPE	0.9							
			OVERALL UDDER	0.25							
			OVERALL F&L	1.04							

DAM YIELDS	Milk KGS	Fat KGS	PTN KGS	Solids	Fat %	PTN %
Highest Lact No. 2	7355	356	276	632	4.84	3.76
Average Across Lifetime	6693	320	249	570	4.78	3.72
Lifetime Production: 3 Lact	20080	961	748	1709	4.79	3.73

PRODUCTION					
Milk Kg	Fat Kg	Protein Kg	Solid Kg	Fat %	Prot %
334	23	18	41	0.17	0.11

FERTILITY		CALVING DIFFICULTY			
Calving Interval	Survival	Records	Dairy Heifer Diff	Rel	Risk
-7.1	3.4	140	6.25	69	Low

MANAGEMENT		HEALTH				DTRS
Milk Speed	Temp	SCC	Mastitis	Lameness	TB	0
-14.3	-0.09	-0.1	-0.05	-0.08	6.14	0

- Interesting pedigree delivering over 40 Kgs of Solids
- Top 5 on Active Bull list for Milk SI and Milk Solids
- EX 90 Dam from a High Component cow family
- High farmer satisfaction

SIRE: MB AMAX RDC	MS: GORTGREEN SEBASTAIN	MGS: (IG) RHINCUE SUPER DANO 12
DAM: JOHNSWELL FR2314 BEAUTY 1027 EX 90	MD: JOHNSWELL RPA BEAUTY	MGD: JOHNSWELL PIM BEAUTY 3 VG 85

EBI SEPT. 24 SOURCE ICBF	REL	LINEAR EVALUATION - INTERBULL 2024									
EBI 284	63%	STATURE	-0.42								
Prod. SI	109	81%	CHEST WIDTH	-0.05							
Fert. SI	116	38%	BODY DEPTH	-1.4							
Carbon SI	-1	61%	ANGULARITY	-0.85							
Calv. SI	62	89%	RUMP ANGLE	1.53							
Beef SI	-15	50%	RUMP WIDTH	-0.78							
Maint. SI	6	43%	REAR LEG SET	0.38							
Mgmt. SI	-1	58%	LOCOMOTION	0.56							
Health SI	8	72%	FOOT ANGLE	-0.97							
			FORE UDDER	1.13							
			REAR UDDER	0.09							
			UDDER SUPPORT	-0.97							
			UDDER DEPTH	0.61							
			TEAT PLACEMENT	-0.28							
			TEAT LENGTH	-1.66							
			BCS	1.24							
			OVERALL TYPE	-0.23							
			OVERALL UDDER	0.16							
			OVERALL F&L	-0.31							

DAM YIELDS	Milk KGS	Fat KGS	PTN KGS	Solids	Fat %	PTN %
Highest Lact No. 2	8170	335	290	625	4.1	3.55
Average Across Lifetime	7664	321	269	590	4.19	3.51
Lifetime Production: 2 Lact	15329	642	538	1180	4.19	3.51

PRODUCTION					
Milk Kg	Fat Kg	Protein Kg	Solid Kg	Fat %	Prot %
175	22	14	35	0.25	0.13

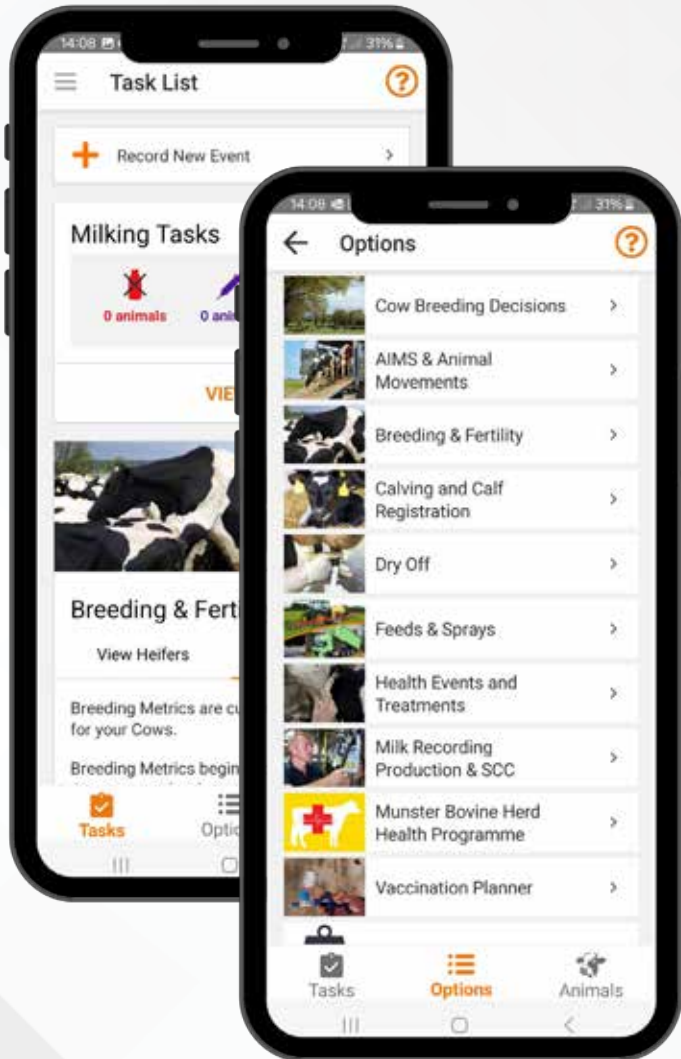
FERTILITY		CALVING DIFFICULTY			
Calving Interval	Survival	Records	Dairy Heifer Diff	Rel	Risk
-7.2	2.1	163	4.2	72	Low

MANAGEMENT		HEALTH				DTRS
Milk Speed	Temp	SCC	Mastitis	Lameness	TB	0
-24.1	-0.23	-0.15	-0.03	-0.03	8.75	0

- Lawson Larry Son from a great Cow Family
- Dam produced over 620kgs of Milk solids in 2nd lactation
- Dam is classified VG 85 with a VG87 3rd Dam
- Easy calving, maintains Body Condition

SIRE: PINE-TREE LAWSON LARRY-ET	MS: (IG) BALLYGOWN ALBERT	MGS: (IG) BALLINABORTA PRIMO
DAM: BALMLAG FR4513 IVY 1909 VG 85	MD: BALMLAG PBM IVY 1206 GP 82	MGD: BALMLAG WUH IVY 801 VG 87

FARMOPS, IT DOES IT ALL.



Make the best use of your **Breeding, Milk Recording and Herd Health** information to make the best decisions on farm.

-  Faster Calf Registrations
-  Tailored Dry Off Plans
-  Support For Bord Bia Inspections
-  SCC Analysis That Works



*“I use FarmOps for calf registrations and animal movements. I had **no issues at all registering calves**. I found it **very handy for Pedigree Registrations**. FarmOps showed the cow family, I just had to click on what I wanted to put in, and the bull code was there. **No searching to be done**. It was **all very straightforward**. I will also be using it to look more into the **milk recording data** and to **dry off** the cows later on in the year.”*

Enda Barrett - Cloonigney, Ballinasloe, Co Galway.

PRE-ORDER

GENOMIC

APX000014075034
PROGENESIS RUBBLE

PED

DOB
11-Sep-21

HERD BOOK NUMBER
HOLCANM000014075034

HO (100%) | Beta Casein A2/A2 | aAa 423561



Dam - PROGENESIS EINSTEIN RUDY VG88



SCAN ME FOR MOST RECENT PROOF

EBI SEPT. 24 SOURCE ICBF REL

EBI **174** 58%

Prod. SI	136	75%
Fert. SI	31	45%
Carbon SI	-33	55%
Calv. SI	41	51%
Beef SI	-20	43%
Maint. SI	-7	35%
Mgmt. SI	0	59%
Health SI	25	74%

Immunity+ A2 A2 NEW

LINEAR EVALUATION - INTERBULL 2024

STATURE	1.53				
CHEST WIDTH	-2.45				
BODY DEPTH	-0.03				
ANGULARITY	1.61				
RUMP ANGLE	2.35				
RUMP WIDTH	0.69				
REAR LEG SET	0.42				
LOCOMOTION	2.97				
FOOT ANGLE	0.63				
FORE UDDER	3.15				
REAR UDDER	3.62				
UDDER SUPPORT	2.3				
UDDER DEPTH	2.39				
TEAT PLACEMENT	1.15				
TEAT LENGTH	-0.93				
BCS	-2.35				
OVERALL TYPE	2.6				
OVERALL UDDER	2.33				
OVERALL F&L	2.76				

USA AUG 24		
TPI 3091		
PRODUCTION		
Milk Lbs	615	Daus 0
Fat Lbs	103	Fat % 0.3
Protein Lbs	57	Protein % 0.14
OTHER TRAITS		
DPR	0.8	
Productive Life	5.6	
SCC	2.68	
TYPE		
PTAT	1.27	
Udder Composite	1.35	
Feet & Legs Composite	0.22	
BCS	-0.4	

PRODUCTION					
Milk Kg	Fat Kg	Protein Kg	Solid Kg	Fat %	Prot %
485	28	21	49	0.15	0.07

FERTILITY		CALVING DIFFICULTY			
Calving Interval	Survival	Records	Dairy Heifer Diff	Rel	Risk
0.2	2.73	0	5.96	62	Low

MANAGEMENT		HEALTH				DTRS
Milk Speed	Temp	SCC	Mastitis	Lameness	TB	0
-31.67	-0.28	-0.31	-0.1	-0.04	7.68	0

- Great cow family backed by generations of VG/EX
- Conway son from Einstein Dam
- +2.3 for Udders & +2.6 Overall Type Score
- Excellent feet and legs, +2.8

SIRE: SANDY-VALLEY R CONWAY-ET	MS: SILVERRIDGE V EINSTEIN	MGS: PROGENESIS MARIUS
DAM: PROGENESIS EINSTEIN RUDY VG88	MD: PROGENESIS MARIUS RILEY	MGD: OCD LEGENDARY RAE-ET EX90

PRE-ORDER

GENOMIC

ELI003245608803
BOMAZ GIZMO-ET

PED

DOB
21-Mar-22

HERD BOOK NUMBER
HOL840M003245608803

HO (100%) | Beta Casein A1/A1 | aAa



MGD: Bomaz Medley 8075-ET VG-85



SCAN ME FOR MOST RECENT PROOF

EBI SEPT. 24 SOURCE ICBF REL

EBI **180** 55%

Prod. SI	154	75%
Fert. SI	18	39%
Carbon SI	-37	51%
Calv. SI	47	40%
Beef SI	-15	36%
Maint. SI	-15	31%
Mgmt. SI	-1	59%
Health SI	29	73%

MILK SOLIDS HEALTH HIGH TYPE SIRE NEW

LINEAR EVALUATION - INTERBULL 2024

STATURE	1.87				
CHEST WIDTH	0.52				
BODY DEPTH	0.08				
ANGULARITY	1.18				
RUMP ANGLE	-1.16				
RUMP WIDTH	2.07				
REAR LEG SET	0.2				
LOCOMOTION	1.79				
FOOT ANGLE	1.67				
FORE UDDER	2.71				
REAR UDDER	3				
UDDER SUPPORT	1.76				
UDDER DEPTH	2.64				
TEAT PLACEMENT	0.71				
TEAT LENGTH	-0.79				
BCS	-0.91				
OVERALL TYPE	2.56				
OVERALL UDDER	2.34				
OVERALL F&L	1.58				

USA AUG 24		
TPI 2994		
PRODUCTION		
Milk Lbs	705	Daus 0
Fat Lbs	93	Fat % 0.25
Protein Lbs	51	Protein % 0.11
OTHER TRAITS		
DPR	0.4	
Productive Life	5.9	
SCC	2.65	
TYPE		
PTAT	0.89	
Udder Composite	1.24	
Feet & Legs Composite	0.56	
BCS	-0.35	

PRODUCTION					
Milk Kg	Fat Kg	Protein Kg	Solid Kg	Fat %	Prot %
560	32	23	55	0.16	0.07

FERTILITY		CALVING DIFFICULTY			
Calving Interval	Survival	Records	Dairy Heifer Diff	Rel	Risk
0.62	2.07	0	7.28	51	Moderate

MANAGEMENT		HEALTH				DTRS
Milk Speed	Temp	SCC	Mastitis	Lameness	TB	0
-33.51	-0.33	-0.33	-0.13	-0.09	8.61	0

- Huge milk subindex, €154
- Breeds average size cows with great udder attachment
- 55kgs of milk solids
- Outcross bloodlines

SIRE: WINSTAR GREYCUP-ET	MS: DENOVO 2981 SHELDON-ET	MGS: ABS MEDLEY-ET
DAM: BOMAZ SHELDON 708-ET	MD: Bomaz Medley 8075 VG85	MGD: BOMAZ 7190-ET

Code	Name	Cat	Proof	EBI	Prod. SI	Fert. SI	Health SI	Maint. SI	Milk Kg	Fat Kg	Prot Kg	Solids kg	Fat %	Prot %	Overall Type	Overall Udder	Overall F&L	Sire	MGS:	Sexed	Pre-Order	aAa
FR7929	(IG)TANKARDSROCK TEAK	PED	GS	348	108	151	37	9	204	20	14	35	0.21	0.12	-0.46	-0.37	0.33	(IG) BALLINTOSIG RING O	(IG) LAURAGH EVERT	Sexed		432516
FR9842	(IG)BALLYDEHOB RINGO	PED	GS	331	114	130	38	0	170	23	14	37	0.27	0.14	0.52	0.74	0.98	(IG) BALLINTOSIG RING O	WESTCOAST YAMASKA VG 86	Sexed		
FR9289	(IG) JOHN SWELL RORY	PED	GS	323	125	132	20	1	334	23	18	41	0.17	0.11	0.90	0.25	1.04	MB AMAX RDC	GORTREEN SEBASTAIN	Sexed		
FR9316	(IG)DUNGRANGE DAN	PED	GS	315	124	128	18	7	221	26	15	41	0.28	0.13	0.65	1.17	0.36	(IG)BALLYCARNEY DENMAN	WESTCOAST PERSEUS VG 87	Sexed		
FR7158	(IG)DOONMANAGH CHOPPER	PED	DP-IRL	307	130	121	2	10	480	19	23	42	0.01	0.10	1.54	1.53	0.57	LARS-ACRES SUPER NERD-ET	COOLNASOON ART			
FR9881	(IG)LISDUFF NAPOLÉON ET	PED	GS	302	119	131	27	-7	275	21	17	38	0.17	0.13	2.68	2.45	1.56	PROGENESIS NAPAVALLEY	FLY-HIGHER MOD CADE-ET	Sexed		
FR7860	(IG)DOONMANAGH REDCLIFF	PED	GS	286	100	125	13	3	40	17	12	28	0.26	0.18	0.52	0.86	-0.57	GLENABOY RONALD	WESTCOAST PERSEUS VG 87	Sexed		423615
FR9124	(IG)BALMLAG LEDGER	PED	GS	284	109	116	8	6	175	22	14	35	0.25	0.13	-0.23	0.16	-0.31	PINE-TREE LAWSON LARRY-ET	(IG) BALLYGOWN ALBERT	Sexed		432516
FR8307	WINSTAR GRAZIANO-ET	PED	DP-INT	276	146	111	22	-5	469	32	21	53	0.22	0.08	1.40	1.74	0.79	PEAK ALTAZAZZLE-ET	ABS CRIMSON-ET	Sexed	✓	432561
FR7910	(IG)BALLYVELLY CHILLI	PED	GS	257	107	112	24	-4	475	16	20	36	-0.04	0.06	1.61	1.61	0.76	PEAK CHILTON-ET	BALLYCAIRN CORINTHIAN	Sexed		243561
FR6139	(IG)LISDUFF PERCEPTION	PED	DP-IRL	255	117	98	14	-1	500	23	20	42	0.05	0.04	1.28	1.07	0.39	WESTCOAST PERSEUS	COGENT TWIST EX 96			
FR6445	KOEPON RAPTOR	PED	DP-INT	252	117	91	12	-3	403	27	17	43	0.18	0.05	2.16	2.08	0.99	PEAK ALTALAWSON-ET	PEAK ALTATOPSHOT-ET	Sexed	✓	423
FR1500	VATLAND GROVES-ET	PED	GS	248	127	84	22	-4	496	24	21	45	0.08	0.06	2.46	2.34	1.56	PINE-TREE GARDNER-ET	PINE-TREE CW LEGACY-ET	Sexed	✓	
FR7923	(IG)TOBERMARTIN FRANCIS Pp	PED	GS	243	120	86	14	1	300	20	18	38	0.14	0.13	1.70	2.06	-0.15	ABS JERONIMO-P-ET	WESTCOAST PERSEUS VG 87			243165
FR4187	WESTCOAST PERSEUS	PED	DP-IRL	226	135	72	13	-4	602	22	25	46	-0.03	0.07	2.11	2.53	0.27	SANDY-VALLEY-I PENMANSHIP	VAL-BISSON DOORMAN EX 90	Sexed	✓	126345
FR1449	DENOVO 16703 PERCY-ET	PED	GS	225	135	70	24	1	413	30	19	49	0.23	0.08	3.29	3.47	1.65	DENOVO 2800 PRINCE-ET	MELARRY JOSUPER FRAZZLED-ET	Sexed	✓	
FR8733	BOGHILL GLAMOUR HAILSTONE ET	PED	GS	225	136	67	22	-7	386	27	19	47	0.20	0.10	1.80	2.11	0.68	PINE-TREE HEROIC-ET	ABS CRIMSON-ET	Sexed	✓	243
FR7806	WESTCOAST ROCKNROLL	PED	GS	219	129	104	26	-19	559	27	21	48	0.08	0.03	3.21	2.57	2.75	PROGENESIS PYRAMID	WESTCOAST ALCOVE	Sexed	✓	435261
FR7812	PROGENESIS BLACKTIE	PED	GS	217	147	56	8	-9	320	31	19	50	0.30	0.14	1.56	2.10	0.52	PEAK ALTALAWSON-ET	BACON-HILL PETY MODESTY-ET VG 86	Sexed	✓	423165
FR9178	(IG) LISDUFF C BREIZ	PED	GS	216	116	89	-1	-2	287	20	17	37	0.14	0.12	2.13	2.25	1.27	FLY-HIGHER MOD CADE-ET	VH PRASER	Sexed		
FR9743	PROGENESIS METALLICA	PED	DP-INT	208	152	47	41	-13	462	28	23	51	0.17	0.12	2.64	2.65	0.86	PEAK ALTAEXPLOSION-ET	WESTCOAST GUARANTEE	Sexed	✓	432651
FR6571	DENOVO 15551 SUBLIME-ET	PED	DP-INT	208	97	70	22	3	182	23	11	34	0.26	0.09	2.01	2.34	1.18	N-SPRINGHOPE HONDA-ET	DE-SU 13050 SPECTRE-ET	Sexed	✓	423
FR8079	DENOVO 17118 PROVO-ET	PED	GS	208	147	58	30	-11	392	32	20	52	0.28	0.10	2.28	2.35	1.49	DENOVO 2800 PRINCE-ET	ABS CRIMSON-ET	Sexed Only	✓	
FR9734	WESTCOAST EARLYBIRD	PED	GS	199	124	76	18	-14	429	28	18	46	0.18	0.05	2.50	2.61	1.43	SILVERRIDGE V EINSTEIN	S-S-I PR RENEGADE-ET	Sexed Only	✓	426351
FR9727	K+L LZ CONAN PP-RED	PED	DP-IRL	193	88	56	31	12	304	14	15	28	0.03	0.07	1.23	1.60	-0.49	RED ROCKS K+L LA SPEEDO	DE-SU 11236 BALISTO	Sexed	✓	324
FR7983	WINSTAR SAHARA-ET	PED	GS	191	145	23	21	-2	358	30	20	49	0.26	0.12	0.63	1.47	-1.00	DENOVO 15540 SEMINOLE-ET	ABS ACHIEVER-ET	Sexed	✓	
FR8223	PINE-TREE-I PURSUIT	PED	DP-INT	190	105	75	16	-9	518	21	18	39	0.01	0.02	2.85	2.65	1.92	SILVERRIDGE V IMAX	S-S-I PARTYROCK PROFIT-ET	Sexed Only	✓	243156
FR7905	(IG)BUNACLOY ALIBI	PED	GS	188	104	71	19	-3	298	21	15	36	0.16	0.08	2.71	2.73	1.95	VH PRASER	VIEW-HOME MONTEREY-ET			
FR1338	PROGENESIS TROY	PED	GS	186	136	31	37	-23	539	28	22	49	0.11	0.05	3.51	3.77	1.74	3STAR OH RANGER RED-ET	PEAK ALTAZAZZLE-ET	Sexed Only	✓	342165
FR1617	WELCOME-TEL COVERBOY-ET	PED	GS	186	140	37	22	-4	588	32	21	53	0.14	0.02	3.74	3.03	2.55	SANDY-VALLEY R CONWAY-ET	PINE-TREE CW LEGACY-ET	Sexed Only	✓	
FR1557	PROGENESIS PERKY	PED	GS	185	154	24	29	-2	500	38	21	58	0.29	0.06	1.71	1.94	0.56	RMD-DOTTERER SSI GAMEDAY-ET	PEAK ALTAZAZZLE-ET	Sexed	✓	423516
FR1518	DENOVO 18732 HEXAGON-ET	PED	GS	185	131	28	30	-11	438	25	20	45	0.12	0.09	2.68	2.47	1.62	PINE-TREE GARDNER-ET	PINE-TREE ACURA-ET	Sexed Only	✓	3425
FR9806	STANTONS APPLICABLE	PED	DP-IRL	183	81	53	35	-8	365	17	13	31	0.05	0.01	3.81	3.22	3.29	SEAGULL-BAY SILVER-ET		Sexed	✓	324156
ELI003253835796	BEYOND HI-PRaise-ET	PED	GS	180	139	35	34	-13	464	30	20	50	0.19	0.07	3.71	3.64	2.12	WELCOME-TEL TAOS HAYK-ET	C-HAVEN POSITIVE DELUXE-ET	Sexed Only	✓	324156
ELI003245608803	BOMAZ GIZMO-ET	PED	GS	180	154	18	29	-15	560	32	23	55	0.16	0.07	2.56	2.34	1.58	WINSTAR GREYCUP-ET	DENOVO 2981 SHELDON-ET	Sexed	✓	
FR4688	DE-SU 14118 REGINALD-ET	PED	DP-IRL	180	60	95	34	10	291	17	9	25	0.09	-0.02	2.37	1.75	2.58	WELCOME LEGENDARY 2870-ET	BACON-HILL MONTROSS-ET EX 92	Sexed Only	✓	
FR9803	BOMAZ ENVOY-ET	PED	DP-INT	176	133	17	26	-16	247	26	17	43	0.27	0.15	2.21	2.04	1.24	N-SPRINGHOPE ESCALATE-ET	BOMAZ ALTAROBSON-ET	Sexed Only	✓	
FR6664	PROGENESIS REG	PED	DP-IRL	176	142	27	11	-13	470	25	23	47	0.11	0.11	2.44	2.80	0.90	PEAK ALTALAWSON-ET	PINE-TREE PROPHECY-ET	Sexed	✓	243156
FR9702	WESTCOAST ALMAMATER	PED	DP-INT	175	102	66	18	-13	383	19	17	36	0.07	0.06	2.86	2.77	1.62	WESTCOAST ALCOVE	IHG MONTANA-ET	Sexed	✓	423516
FR9724	SANDY-VALLEY CHALLENGER-ET	PED	DP-INT	174	97	77	17	-5	566	23	17	40	0.02	-0.04	1.99	2.80	0.14	ENDCO SUPERHERO-ET	SEAGULL-BAY SILVER-ET	Sexed	✓	426315
APX000014075034	PROGENESIS RUBBLE	PED	GS	174	136	31	25	-7	485	28	21	49	0.15	0.07	2.60	2.33	2.76	SANDY-VALLEY R CONWAY-ET	SILVERRIDGE V EINSTEIN	Sexed	✓	423561
FR9731	STANTONS ADORABLE	PED	DP-INT	173	94	53	11	-11	566	16	19	35	-0.09	-0.01	2.97	2.81	1.98	COGENT SUPERSHOT	DE-SU BKM MCCUTCHEN 1174-ET EX 93	Sexed	✓	342156
FR1077	MAT RED Pp	PED	GS	172	119	26	29	-11	505	24	19	43	0.07	0.04	3.05	3.30	1.01	MATTY PRDC	CAUDUMER SOLITAIR P	Sexed Only	✓	243
FR5509	WISSELVIEW WAVELENGTH	PED	DP-INT	170	116	53	19	-3	479	23	19	42	0.07	0.04	2.31	2.36	0.76	SILVERRIDGE V IMAX	LADYS-MANOR DOORSOPEN-ET VG 86	Sexed	✓	
ELI003253835878	BEYOND HI-POWER-ET	PED	GS	167	136	24	18	-16	532	30	21	51	0.15	0.04	3.33	3.73	1.29	PEAK POWERSTAR-ET	C-HAVEN POSITIVE DELUXE-ET	Sexed Only	✓	243165
FR4368	WESTCOAST YAMASKA	PED	DP-IRL	163	125	36	19	-2	329	23	18	41	0.17	0.11	2.00	2.03	1.21	SANDY-VALLEY AFTERBURNER-ET	WOODCREST MOGUL YODER-ET	Sexed	✓	432516
FR8700	PROGENESIS PROTOCOL	PED	GS	162	120	50	20	-18	364	24	18	41	0.16	0.09	2.75	2.32	1.72	PINE-TREE-I PURSUIT	BOMAZ ALTAROBSON-ET	Sexed	✓	
FR8697	WESTCOAST MIDMARCH	PED	GS	158	122	15	33	-10	340	27	16	43	0.23	0.08	3.15	3.28	1.56	CLAYNOOK ZASBERILLA	S-S-I PR RENEGADE-ET	Sexed	✓	243615
FR9818	WINSTAR MEADOW-PP-ET	PED	GS	155	130	16	21	-5	449	32	18	50	0.23	0.04	2.65	2.51	1.19	WINSTAR MENDEL-P-ET	PINE-TREE ACURA-ET	Sexed Only	✓	
FR1003	3STAR OH SHARP RED	PED	GS	153	118	15	32	-12	584	23	21	44	0.01	0.02	2.82	2.67	1.86	ZFZ 74596	WIL 43407	Sexed Only	✓	
FR9704	SANDY-VALLEY I BATMAN-ET	PED	DP-IRL	147	105	35	12	-2	198	21	14	34	0.22	0.12	1.96	2.51	0.09	SILVERRIDGE V IMAX	S-S-I MONTROSS JEDI-ET	Sexed	✓	423165
FR8343	KOEPON OH RYDER RED	PED	GS	143	101	51	23	-7	609	20	19	40	-0.05	-0.02	3.79	3.84	1.82	HOGERHORST DG OH RUBELS-RED	MR SALVATORE RC-ET	Sexed Only	✓	342
BTD956444502861	SBG MECCA	PED	GS	130	127	11	27	-11	520	30	19	49	0.15	0.03	1.94	2.19	1.20	BOMAZ MONUMENT-P-ET	BACON-HILL HURRICANE-ET	Sexed	✓	243
FR1686	HELLENDER BRANDY P	PED	GS	110	63	46	23	-5	471	15	13	28	-0.05	-0.05	4.70	4.16	3.96	TRENT-WAY-JS RONALD-ET		Sexed Only	✓	</

PRE-ORDER

GENOMIC

FR1617 WELCOME-TEL COVERBOY-ET PED

DOB 21/01/2021

HERD BOOK NUMBER HOL840M003214541180

HO 100% | Beta Casein A2/A2 | aAa



WELCOME LEGACY GAYE-ET VG85



SCAN ME FOR MOST RECENT PROOF

HEALTH HIGH TYPE SIRE SEXED SEMEN ONLY A2 A2 NEW

EBI SEPT. 24 SOURCE ICBF	REL
EBI 186	59%
Prod. SI	140 76%
Fert. SI	37 44%
Carbon SI	-31 55%
Calv. SI	41 51%
Beef SI	-21 44%
Maint. SI	-4 35%
Mgmt. SI	1 59%
Health SI	22 74%

LINEAR EVALUATION - INTERBULL 2024

Trait	Value	Target
STATURE	1.29	
CHEST WIDTH	-0.51	
BODY DEPTH	0.19	
ANGULARITY	1.18	
RUMP ANGLE	0.02	
RUMP WIDTH	-1.34	
REAR LEG SET	-1.72	
LOCOMOTION	2.32	
FOOT ANGLE	2.54	
FORE UDDER	3.42	
REAR UDDER	3.16	
UDDER SUPPORT	2.34	
UDDER DEPTH	2.79	
TEAT PLACEMENT	1.39	
TEAT LENGTH	0.12	
BCS	-0.5	
OVERALL TYPE	3.74	
OVERALL UDDER	3.03	
OVERALL F&L	2.55	

PRODUCTION					
Milk Kg	Fat Kg	Protein Kg	Solid Kg	Fat %	Prot %
588	32	21	53	0.14	0.02

FERTILITY		CALVING DIFFICULTY			
Calving Interval	Survival	Records	Dairy Heifer Diff	Rel	Risk
-0.1	2.8	0	5.46	64	Low

MANAGEMENT		HEALTH				DTRS
Milk Speed	Temp	SCC	Mastitis	Lameness	TB	
-22.2	-0.17	-0.27	-0.03	-0.04	6.3	0

- **Outcross pedigree**
- **Conway x Legacy x Legendary**
- **+150 CFP with high DPR & Prod. Life scores**
- **Top 5% to increase TB resistance**

SIRE: SANDY-VALLEY R CONWAY-ET	MS: PINE-TREE CW LEGACY-ET	MGS: WELCOME LEGENDARY 2870-ET
DAM: WELCOME LEGACY GAYE-ET VG85	MD: WELCOME LEGENDARY GALE-ET EX90	MGD: WELCOME DELTA GOOGLE-ET

INTERNATIONAL DTR PROVEN

DTRS 1725 HERDS 379

FR9743 PROGENESIS METALLICA PED

DOB 12/03/2019

HERD BOOK NUMBER HOLCANM000013353639

HO 100% | Beta Casein A2/A2 | aAa 432651



GRANDDAM: PROGENESIS DUKE MOLDAVITE



SCAN ME FOR MOST RECENT PROOF

HEALTH HIGH TYPE SIRE A2 A2

EBI SEPT. 24 SOURCE ICBF	REL
EBI 208	75%
Prod. SI	152 91%
Fert. SI	47 71%
Carbon SI	-27 71%
Calv. SI	46 89%
Beef SI	-36 47%
Maint. SI	-13 36%
Mgmt. SI	-2 60%
Health SI	41 76%

LINEAR EVALUATION - INTERBULL 2024

Trait	Value	Target
STATURE	1.25	
CHEST WIDTH	-0.31	
BODY DEPTH	-0.48	
ANGULARITY	0.19	
RUMP ANGLE	1.54	
RUMP WIDTH	-0.37	
REAR LEG SET	0.08	
LOCOMOTION	1.72	
FOOT ANGLE	0.69	
FORE UDDER	3.37	
REAR UDDER	2.6	
UDDER SUPPORT	2.1	
UDDER DEPTH	2.99	
TEAT PLACEMENT	1.59	
TEAT LENGTH	-0.71	
BCS	0.51	
OVERALL TYPE	2.64	
OVERALL UDDER	2.65	
OVERALL F&L	0.86	

PRODUCTION					
Milk Kg	Fat Kg	Protein Kg	Solid Kg	Fat %	Prot %
462	28	23	51	0.17	0.12

FERTILITY		CALVING DIFFICULTY			
Calving Interval	Survival	Records	Dairy Heifer Diff	Rel	Risk
-0.9	2.9	172	7.51	67	Moderate

MANAGEMENT		HEALTH			
Milk Speed	Temp	SCC	Mastitis	Lameness	TB
-29.4	-0.3	-0.35	-0.11	-0.1	5.17

- **Daughter Proven Internationally**
- **Top 5 on the All Sires Bull list for Health SI**
- **Great farmer satisfaction**
- **+2.6 for both Udders & Overall Type Score**

SIRE: PEAK ALTAEXPLOSION-ET	MS: WESTCOAST GUARANTEE	MGS: S-5-1 MONTROSS DUKE-ET
DAM: PROGENESIS GUARANT MILLIONS EX91	MD: PROGENESIS DUKE MOLDAVITE	MGD: WOODCREST DEF MANHATTAN-ET

IRISH DTR
PROVEN

DTRS
95

HERDS
60

IRISH DTR
PROVEN

DTRS
969

HERDS
400

FR7158 (IG)DOONMANAGH
CHOPPER PED

DOB
12/02/2020

HERD BOOK NUMBER
HOLIRLM214299441425

HO 88%,
FR 12% | Beta Casein
A1/A1 | aAa



Bred by John P Galvin, Lispolo, Co Kerry

Dam: DOONMANAGH FR2249CHERRY GP 84



SCAN ME FOR MOST
RECENT PROOF



FR6139 (IG)LISDUFF PERCEPTION PED

DOB
19/01/2019

HERD BOOK NUMBER
HOLIRLM224508745649

HO 100% | Beta Casein
A2/A2 | aAa



Bred by John J O'Sullivan, Whitechurch, Co Cork

Dam: LISDUFF LESLIE 153 EX 90 2E



SCAN ME FOR MOST
RECENT PROOF



EBI SEPT. 24 SOURCE ICBF REL		LINEAR EVALUATION - INTERBULL 2024						
EBI	307	82%	STATURE	-0.15				
Prod. SI	130	95%	CHEST WIDTH	-0.6				
Fert. SI	121	62%	BODY DEPTH	-1.73				
Carbon SI	-8	83%	ANGULARITY	-0.92				
Calv. SI	59	95%	RUMP ANGLE	-0.02				
Beef SI	-15	88%	RUMP WIDTH	-1.47				
Maint. SI	10	78%	REAR LEG SET	-3.69				
Mgmt. SI	8	63%	LOCOMOTION	0.89				
Health SI	2	78%	FOOT ANGLE	2.51				
			FORE UDDER	2.53				
			REAR UDDER	1.38				
			UDDER SUPPORT	1.23				
			UDDER DEPTH	2.26				
			TEAT PLACEMENT	0.05				
			TEAT LENGTH	-2.74				
			BCS	1.43				
			OVERALL TYPE	1.54				
			OVERALL UDDER	1.53				
			OVERALL F&L	0.57				

DAM YIELDS	Milk KGS	Fat KGS	PTN KGS	Solids	Fat %	PTN %
Highest Lact No. 4	8109	329	321	650	4.05	3.96
Average Across Lifetime	7303	284	282	566	3.88	3.86
Lifetime Production: 4 Lact	29211	1134	1129	2263	3.88	3.86

PRODUCTION					
Milk Kg	Fat Kg	Protein Kg	Solid Kg	Fat %	Prot %
480	19	23	42	0.01	0.10

FERTILITY		CALVING DIFFICULTY			
Calving Interval	Survival	Records	Dairy Heifer Diff	Rel	Risk
-6.7	3	613	4.71	86	Low

MANAGEMENT		HEALTH			
Milk Speed	Temp	SCC	Mastitis	Lameness	TB
-12.2	0.11	-0.12	-0.02	0.01	8.98

- Daughter proven, easy calving for heifers
- Daughters average 4.6% for fat and 3.59% for protein
- Dam produced over 650kgs of Milk solids in her fourth lactation
- +1.5 for both Udders & Overall Type Score

SIRE: LARS-ACRES SUPER NERD-ET	MS: COOLNASOON ART	MGS: (IG) LAURAGH EVERT
DAM: DOONMANAGH FR2249CHERRY GP 84	MD: DOONMANAGH CHERRY 5 GP 82	MGD: DOONMANAGH RIP CHERRY GP 84

EBI SEPT. 24 SOURCE ICBF REL		LINEAR EVALUATION - INTERBULL 2024						
EBI	255	91%	STATURE	1.09				
Prod. SI	117	99%	CHEST WIDTH	-1.3				
Fert. SI	98	78%	BODY DEPTH	-1.33				
Carbon SI	-18	93%	ANGULARITY	0.18				
Calv. SI	46	99%	RUMP ANGLE	1.44				
Beef SI	-6	99%	RUMP WIDTH	-0.07				
Maint. SI	-1	91%	REAR LEG SET	-1.79				
Mgmt. SI	4	72%	LOCOMOTION	1.22				
Health SI	14	87%	FOOT ANGLE	2.28				
			FORE UDDER	1.16				
			REAR UDDER	0.61				
			UDDER SUPPORT	0.55				
			UDDER DEPTH	2.11				
			TEAT PLACEMENT	0.18				
			TEAT LENGTH	0.92				
			BCS	-0.24				
			OVERALL TYPE	1.28				
			OVERALL UDDER	1.07				
			OVERALL F&L	0.39				

DAM YIELDS	Milk KGS	Fat KGS	PTN KGS	Solids	Fat %	PTN %
Highest Lact No. 5	10284	432	376	808	4.2	3.66
Average Across Lifetime	9266	381	330	711	4.1	3.56
Lifetime Production: 7 Lact	64859	2665	2309	4974	4.11	3.56

PRODUCTION					
Milk Kg	Fat Kg	Protein Kg	Solid Kg	Fat %	Prot %
500	23	20	42	0.05	0.04

FERTILITY		CALVING DIFFICULTY			
Calving Interval	Survival	Records	Dairy Heifer Diff	Rel	Risk
-5.3	2.5	4086	5.84	98	Low

MANAGEMENT		HEALTH			
Milk Speed	Temp	SCC	Mastitis	Lameness	TB
-19.3	-0.05	-0.2	-0.02	0.01	6.7

- 11 generations VG/EX, from the Leslie family
- Balanced on EBI for both production and fertility
- Dam produced over 800kgs of Milk solids in 5th lactation
- Daughters average 4.16% for fat and 3.54% for protein

SIRE: WESTCOAST PERSEUS	MS: COGENT TWIST EX 96	MGS: LONG-LANGS OMAN OMAN TV TL TY VG 85
DAM: LISDUFF LESLIE 153 EX 90 2E	MD: LISDUFF LESLIE 115 ET EX 90	MGD: LISDUFF LESLIE 81 ET EX 90 4E

PRE-ORDER

INTERNATIONAL DTR PROVEN

DTRS 101

HERDS 63

FR8703 WINSTAR GRAZIANO-ET PED

DOB 02/06/2020

HERD BOOK NUMBER HOL840M003212150599

HO 100% | Beta Casein A1/A2 | aAa 432561 | HH6C



DAU: PROGENESIS WC 13179



SCAN ME FOR MOST RECENT PROOF

EBI SEPT. 24 SOURCE	ICBF	REL
EBI 276	69%	
Prod. SI	146	89%
Fert. SI	111	55%
Carbon SI	-21	65%
Calv. SI	46	91%
Beef SI	-25	38%
Maint. SI	-5	33%
Mgmt. SI	2	59%
Health SI	22	75%

HEALTH HIGH TYPE SIRE SEXED SEMEN EASY CALVING SIRE

LINEAR EVALUATION - INTERBULL 2024

Trait	Value	Target
STATURE	1.04	1.00
CHEST WIDTH	-1.91	-1.50
BODY DEPTH	-0.67	-0.50
ANGULARITY	1.21	1.00
RUMP ANGLE	0.23	0.00
RUMP WIDTH	-0.48	-0.25
REAR LEG SET	-0.11	0.00
LOCOMOTION	1.44	1.25
FOOT ANGLE	0.46	0.25
FORE UDDER	3.12	2.75
REAR UDDER	1.97	1.75
UDDER SUPPORT	0.95	0.75
UDDER DEPTH	2.5	2.25
TEAT PLACEMENT	1.45	1.25
TEAT LENGTH	0.31	0.25
BCS	-1.14	-1.00
OVERALL TYPE	1.4	1.25
OVERALL UDDER	1.74	1.50
OVERALL F&L	0.79	0.75

USA AUG 24	
TPI 3000	101
PRODUCTION	
Milk Lbs	105
Fat Lbs	108
Protein Lbs	47
OTHER TRAITS	
DPR	2.2
Productive Life	5.9
SCC	2.62
TYPE	
PTAT	0.5
Udder Composite	0.48
Feet & Legs Composite	-0.13
BCS	-0.37

PRODUCTION					
Milk Kg	Fat Kg	Protein Kg	Solid Kg	Fat %	Prot %
469	32	21	53	0.22	0.08

FERTILITY		CALVING DIFFICULTY			
Calving Interval	Survival	Records	Dairy Heifer Diff	Rel	Risk
-5.8	3.1	233	4.95	88	Low

MANAGEMENT		HEALTH			
Milk Speed	Temp	SCC	Mastitis	Lameness	TB
-36	-0.26	-0.28	-0.08	-0.04	7.83

- Top imported bull for EBI
- Increasing on every evaluation
- Improves components and solids
- Adds Teat Length

PRE-ORDER

INTERNATIONAL DTR PROVEN

DTRS 141

HERDS 47

FR6445 KOEPON RAPTOR PED

DOB 22/03/2019

HERD BOOK NUMBER HOLNLDM000682613808

HO 100% | Beta Casein A1/A2 | aAa 423 | HH6C



DAU: Bachymbyd Raptor Who 904-2Yrs



SCAN ME FOR MOST RECENT PROOF

EBI SEPT. 24 SOURCE	ICBF	REL
EBI 252	85%	
Prod. SI	117	96%
Fert. SI	91	74%
Carbon SI	-15	84%
Calv. SI	60	96%
Beef SI	-1	86%
Maint. SI	-3	63%
Mgmt. SI	-9	64%
Health SI	12	78%

HIGH TYPE SIRE COMPONENT SPECIALIST EASY CALVING SIRE SEXED SEMEN

LINEAR EVALUATION - INTERBULL 2024

Trait	Value	Target
STATURE	1.16	1.00
CHEST WIDTH	-0.61	-0.50
BODY DEPTH	-1.57	-0.50
ANGULARITY	-0.65	0.00
RUMP ANGLE	1.8	0.00
RUMP WIDTH	-0.93	-0.25
REAR LEG SET	0.14	0.00
LOCOMOTION	1.97	1.25
FOOT ANGLE	-0.47	0.25
FORE UDDER	3.01	2.75
REAR UDDER	2.31	2.25
UDDER SUPPORT	2.14	2.00
UDDER DEPTH	4.04	3.75
TEAT PLACEMENT	0.4	0.25
TEAT LENGTH	-0.35	0.00
BCS	0.25	0.00
OVERALL TYPE	2.16	1.75
OVERALL UDDER	2.08	1.75
OVERALL F&L	0.99	0.75

USA AUG 24	
TPI 2678	1649
PRODUCTION	
Milk Lbs	-4
Fat Lbs	60
Protein Lbs	35
OTHER TRAITS	
DPR	1.2
Productive Life	5.7
SCC	2.74
TYPE	
PTAT	-0.02
Udder Composite	0.34
Feet & Legs Composite	0.06
BCS	0.86

PRODUCTION					
Milk Kg	Fat Kg	Protein Kg	Solid Kg	Fat %	Prot %
403	27	17	43	0.18	0.05

FERTILITY		CALVING DIFFICULTY			
Calving Interval	Survival	Records	Dairy Heifer Diff	Rel	Risk
-4.8	2.4	612	5.4	95	Low

MANAGEMENT		HEALTH			
Milk Speed	Temp	SCC	Mastitis	Lameness	TB
-23.7	-0.45	-0.31	-0.09	-0.05	11.51

- Easy calving for Heifers
- Great production and solids
- Daughters average 6,300 ltrs @ 4.1% fat and 3.45% protein
- +2.6 for both Udders & Overall Type Score

SIRE: PEAK ALTAAZZALE-ET	MS: ABS CRIMSON-ET	MGS: S-S-I MONTROSS JEDI-ET
DAM: WINSTAR CRIMSON GEM-ET VG86	MD: SEAGULL-BAY JEDI MIRAGE-ET VG88	MGD: IHG NOMINEE MER 9040-ET VG85

SIRE: PEAK ALTALAWSON-ET	MS: BOMAZ ALTATOPSHOT-ET	MGS: EDG RUBICON-ET
DAM: KOEPON TOPSHOT RUBY 5 VG85	MD: KOEPON RUBY-ANN	MGD: JABIR REGENIA

FR6571
DENOVO 15551 SUBLIME-ET PED

DOB: 24/12/2018 HERD BOOK NUMBER: HOL840M003204164789

HO 100% | Beta Casein A2/A2 | aAa 423



DAM: Seagull-Bay Spectr Sandy-ET VG-85



HEALTH COMPONENT SPECIALIST SEXED SEMEN

SCAN ME FOR MOST RECENT PROOF

EBI SEPT. 24 SOURCE	ICBF	REL
EBI 208	78%	
Prod. SI	97	96%
Fert. SI	70	54%
Carbon SI	-9	78%
Calv. SI	44	95%
Beef SI	-22	81%
Maint. SI	3	61%
Mgmt. SI	4	62%
Health SI	22	78%

A2 A2

LINEAR EVALUATION - INTERBULL 2024

STATURE	0.8				
CHEST WIDTH	-1.17				
BODY DEPTH	-0.09				
ANGULARITY	0.78				
RUMP ANGLE	3.53				
RUMP WIDTH	0.09				
REAR LEG SET	0.26				
LOCOMOTION	1.07				
FOOT ANGLE	0.51				
FORE UDDER	3.09				
REAR UDDER	2.56				
UDDER SUPPORT	2.62				
UDDER DEPTH	3.43				
TEAT PLACEMENT	0.68				
TEAT LENGTH	-5.03				
BCS	-0.34				
OVERALL TYPE	2.01				
OVERALL UDDER	2.34				
OVERALL F&L	1.18				

PRODUCTION					
Milk Kg	Fat Kg	Protein Kg	Solid Kg	Fat %	Prot %
182	23	11	34	0.26	0.09

FERTILITY		CALVING DIFFICULTY			
Calving Interval	Survival	Records	Dairy Heifer Diff	Rel	Risk
-3.3	2.3	485	6.53	92	Low

MANAGEMENT		HEALTH			
Milk Speed	Temp	SCC	Mastitis	Lameness	TB
-15.5	-0.03	-0.27	-0.12	-0.11	10.14

- **Outcross Daughter Proven sire**
- **+ 2.3 Udder and +2 Overall Type Score**
- **Daughters average 4.31% fat and 3.45% protein**
- **Breeds healthier cows**

SIRE: N-SPRINGHOPE HONDA-ET | MS: DE-SU 13050 SPECTRE-ET | MGS: MR MOGUL DELTA 1427-ET
 DAM: SEAGULL-BAY SPECTR SANDY-ET VG85 | MD: VG86TRES-REYNAS DELTA 152-ETVG86 | MGD: TRES-REYNAS SS LIZZY-ET

FR8223 PINE-TREE-I PURSUIT PED

DOB: 03/08/2017 HERD BOOK NUMBER: HOLCANM000012857690

HO 100% | Beta Casein A1/A2 | aAa 243156



DAU: WESTCOAST PSUIT LAUMAB 8996 VG89 3yrs



HEALTH HIGH TYPE SIRE SEXED SEMEN ONLY

SCAN ME FOR MOST RECENT PROOF

EBI SEPT. 24 SOURCE	ICBF	REL
EBI 190	79%	
Prod. SI	105	92%
Fert. SI	75	83%
Carbon SI	-19	73%
Calv. SI	44	87%
Beef SI	-20	42%
Maint. SI	-9	37%
Mgmt. SI	-1	62%
Health SI	16	79%

LINEAR EVALUATION - INTERBULL 2024

STATURE	1.71				
CHEST WIDTH	0.7				
BODY DEPTH	0.98				
ANGULARITY	1.17				
RUMP ANGLE	2.05				
RUMP WIDTH	2.15				
REAR LEG SET	0.46				
LOCOMOTION	2.91				
FOOT ANGLE	0.09				
FORE UDDER	2.34				
REAR UDDER	3.18				
UDDER SUPPORT	2.62				
UDDER DEPTH	1.99				
TEAT PLACEMENT	2.59				
TEAT LENGTH	0.64				
BCS	-0.24				
OVERALL TYPE	2.85				
OVERALL UDDER	2.65				
OVERALL F&L	1.92				

PRODUCTION					
Milk Kg	Fat Kg	Protein Kg	Solid Kg	Fat %	Prot %
518	21	18	39	0.01	0.02

FERTILITY		CALVING DIFFICULTY			
Calving Interval	Survival	Records	Dairy Heifer Diff	Rel	Risk
-1.4	4.5	58	7.2	79	Moderate

MANAGEMENT		HEALTH			
Milk Speed	Temp	SCC	Mastitis	Lameness	TB
-41.8	-0.4	-0.33	-0.08	0.02	8.71

- **International sire of sons**
- **IMAX son backed by 8 generations VG/EX**
- **Superb Feet and legs**
- **From the Rudy Missy cow family**

SIRE: SILVERRIDGE V IMAX | MS: S-5-1 PARTYROCK PROFIT-ET | MGS: SEAGULL-BAY SUPERSIRE-ET EX 90
 DAM: PINE-TREE 9882 PROF 7019-ET VG 86 | MD: OCD SUPERSIRE 9882-ET VG 86 | MGD: OCD ROBUST SHIMMER-ET EX 90

PRE-ORDER

INTERNATIONAL
DTR PROVEN

DTRS
3543

HERDS
807

FR9702
WESTCOAST ALMAMATER

PED

DOB
13/08/2018

HERD BOOK NUMBER
HOLCANM000013127706

HO 100% | Beta Casein A2/A2 | aAa 423516



DAM: WESTCOAST MONTANA RIZA 4700 VG 87



SCAN ME FOR MOST
RECENT PROOF

EBI SEPT. 24	SOURCE	ICBF	REL
EBI	175	82%	
Prod. SI	102	94%	
Fert. SI	66	81%	
Carbon SI	-22	79%	
Calv. SI	36	95%	
Beef SI	-12	67%	
Maint. SI	-13	41%	
Mgmt. SI	-1	61%	
Health SI	18	77%	

USA AUG 24	
TPI	2722
PRODUCTION	
Milk Lbs	36 Daus 3543
Fat Lbs	62 Fat % 0.24
Protein Lbs	32 Protein % 0.12
OTHER TRAITS	
DPR	1.2
Productive Life	3.5
SCC	2.76
TYPE	
PTAT	1.27
Udder Composite	1.94
Feet & Legs Composite	-0.08
BCS	1.37

HEALTH MILK SOLIDS SEXED SEMEN

A2 A2 Immunity+

LINEAR EVALUATION - INTERBULL 2024

Trait	Value	Target
STATURE	0.96	0.00
CHEST WIDTH	0.91	0.00
BODY DEPTH	0.33	0.00
ANGULARITY	-0.02	0.00
RUMP ANGLE	2.78	0.00
RUMP WIDTH	0.07	0.00
REAR LEG SET	-0.82	0.00
LOCOMOTION	2.58	0.00
FOOT ANGLE	1.5	0.00
FORE UDDER	3.83	0.00
REAR UDDER	3.45	0.00
UDDER SUPPORT	2.28	0.00
UDDER DEPTH	3.09	0.00
TEAT PLACEMENT	2.15	0.00
TEAT LENGTH	2.13	0.00
BCS	1.16	0.00
OVERALL TYPE	2.86	0.00
OVERALL UDDER	2.77	0.00
OVERALL F&L	1.62	0.00

PRODUCTION					
Milk Kg	Fat Kg	Protein Kg	Solid Kg	Fat %	Prot %
383	19	17	36	0.07	0.06

FERTILITY		CALVING DIFFICULTY			
Calving Interval	Survival	Records	Dairy Heifer Diff	Rel	Risk
-2.7	2.6	432	7.09	90	Low

MANAGEMENT		HEALTH			
Milk Speed	Temp	SCC	Mastitis	Lameness	TB
-26.6	-0.25	-0.3	-0.1	-0.07	10.17

- Great 1st and 2nd calvers in Ireland
- Medium sized with strength and fertility
- Superb udders, +2.8, adds teat length
- Maintains good Body Condition Score

SIRE: WESTCOAST ALCOVE	MS: IHG MONTANA-ET	MGS: COGENT SUPERSHOT
DAM: WESTCOAST MONTANA RIZA 4700 VG 87	MD: WESTCOAST SUPERSHOT RIZA 2951 GP 80	MGD: EDG RUBY UNO RIZA-ET EX91

PRE-ORDER

INTERNATIONAL
DTR PROVEN

DTRS
14545

HERDS
2558

FR9731 STANTONS ADORABLE

PED

DOB
12/06/2015

HERD BOOK NUMBER
HOLCANM000012189047

HO 100% | Beta Casein A1/A2 | aAa 342156



STANTONS ADORABLE DAUGHTERS



SCAN ME FOR MOST
RECENT PROOF

EBI SEPT. 24	SOURCE	ICBF	REL
EBI	173	85%	
Prod. SI	94	95%	
Fert. SI	53	88%	
Carbon SI	-27	83%	
Calv. SI	34	91%	
Beef SI	10	67%	
Maint. SI	-11	54%	
Mgmt. SI	9	65%	
Health SI	11	81%	

USA AUG 24	
TPI	2451
PRODUCTION	
Milk Lbs	446 Daus 8857
Fat Lbs	31 Fat % 0.05
Protein Lbs	29 Protein % 0.06
OTHER TRAITS	
DPR	-0.3
Productive Life	1.7
SCC	2.94
TYPE	
PTAT	1.79
Udder Composite	1.95
Feet & Legs Composite	1.14
BCS	1.79

HIGH TYPE SIRE SEXED SEMEN

LINEAR EVALUATION - INTERBULL 2024

Trait	Value	Target
STATURE	2.27	0.00
CHEST WIDTH	0.88	0.00
BODY DEPTH	0.78	0.00
ANGULARITY	0.44	0.00
RUMP ANGLE	1.68	0.00
RUMP WIDTH	1.68	0.00
REAR LEG SET	-1.33	0.00
LOCOMOTION	2.65	0.00
FOOT ANGLE	1.74	0.00
FORE UDDER	3.76	0.00
REAR UDDER	3.16	0.00
UDDER SUPPORT	3.25	0.00
UDDER DEPTH	4.34	0.00
TEAT PLACEMENT	1.41	0.00
TEAT LENGTH	-1.66	0.00
BCS	1.23	0.00
OVERALL TYPE	2.97	0.00
OVERALL UDDER	2.81	0.00
OVERALL F&L	1.98	0.00

PRODUCTION					
Milk Kg	Fat Kg	Protein Kg	Solid Kg	Fat %	Prot %
566	16	19	35	-0.09	-0.01

FERTILITY		CALVING DIFFICULTY			
Calving Interval	Survival	Records	Dairy Heifer Diff	Rel	Risk
-2.2	2.1	197	7.7	86	Moderate

MANAGEMENT		HEALTH			
Milk Speed	Temp	SCC	Mastitis	Lameness	TB
-41.3	-0.1	-0.3	-0.07	-0.03	10.71

- Impressive daughters in Ireland
- Half brother to Applicable/Alligator
- Dam VG 88 and MGDam VG 85
- Bull is classified EX93

SIRE: COGENT SUPERSHOT	MS: DE-SU BKM MCCUTCHEN 1174-ET EX 93	MGS: DE-SU OBSERVER-ET EX 91
DAM: STANTONS MCCUTCHEN 1174 AGREE VG 88	MD: STANTONS OBSERVER EXTREME VG 85	MGD: WABASH-WAY BOL ELIZABETH-ET VG 87

PRE-ORDER

INTERNATIONAL
DTR PROVEN

DTRS 1075 HERDS 297

FR9704 SANDY-VALLEY I
BATMAN-ET

PED

DOB
27/09/2017

HERD BOOK NUMBER
HOL840M003140616408

HO 100% | Beta Casein A1/A2 | aAa 423165 | HH5C



MGD: Sandy-Valley BL Paradise-EX93



SCAN ME FOR MOST
RECENT PROOF

EBI	SEPT. 24 SOURCE	ICBF	REL
EBI 147			93%
Prod. SI	105		99%
Fert. SI	35		86%
Carbon SI	-19		94%
Calv. SI	37		98%
Beef SI	-19		97%
Maint. SI	-2		91%
Mgmt. SI	-3		70%
Health SI	12		88%

LINEAR EVALUATION - INTERBULL 2024

Trait	Value	Target	Deviation
STATURE	1.66	1.5	+0.16
CHEST WIDTH	0.64	0.5	+0.14
BODY DEPTH	1.75	1.5	+0.25
ANGULARITY	1.27	1.0	+0.27
RUMP ANGLE	-1.22	-1.0	-0.22
RUMP WIDTH	-0.02	0.0	-0.02
REAR LEG SET	1	1.0	0.0
LOCOMOTION	1.03	1.0	+0.03
FOOT ANGLE	-0.69	-0.5	-0.19
FORE UDDER	3.38	3.0	+0.38
REAR UDDER	2.84	2.5	+0.34
UDDER SUPPORT	2.98	2.5	+0.48
UDDER DEPTH	2.96	2.5	+0.46
TEAT PLACEMENT	2.37	2.0	+0.37
TEAT LENGTH	-0.1	0.0	-0.1
BCS	-0.38	0.0	-0.38
OVERALL TYPE	1.96	2.0	-0.04
OVERALL UDDER	2.51	2.5	+0.01
OVERALL F&L	0.09	0.0	+0.09

USA AUG 24			
TPI	2855		
PRODUCTION			
Milk Lbs	345	Daus	4593
Fat Lbs	101	Fat %	0.34
Protein Lbs	59	Protein %	0.19
OTHER TRAITS			
DPR	-2.1		
Productive Life	2.2		
SCC	2.97		
TYPE			
PTAT	1.63		
Udder Composite	0.95		
Feet & Legs Composite	0.61		
BCS	1.28		

PRODUCTION					
Milk Kg	Fat Kg	Protein Kg	Solid Kg	Fat %	Prot %
198	21	14	34	0.22	0.12

FERTILITY		CALVING DIFFICULTY			
Calving Interval	Survival	Records	Dairy Heifer Diff	Rel	Risk
-1.1	1.8	2090	7.83	97	Moderate

MANAGEMENT		HEALTH			
Milk Speed	Temp	SCC	Mastitis	Lameness	TB
-10.1	-0.18	-0.2	-0.07	-0.04	9.32

- **Imax son with 8 Gen VG/EX**
- **Udder improver with high wide rear udders**
- **+ 2.5 Udder and +2 Overall Type Score**
- **Irish daughters average 4.23% fat and 3.55% protein**

SIRE: SILVERRIDGE V IMAX	MS: S-5-1 MONTROSS JEDI-ET	MGS: DE-SU 11236 BALISTO
DAM: SANDY-VALLEY J BAHAMA-ET EX 90	MD: SANDY-VALLEY BL PARADISE-ET EX 93	MGD: SANDY-VALLEY NU PERCIOUS-ET VG 88

PRE-ORDER

INTERNATIONAL
DTR PROVEN

DTRS 123 HERDS 42

FR9803 BOMAZ ENVOY-ET

PED

DOB
05/06/2019

HERD BOOK NUMBER
HOL840M003206094032

HO 100% | Beta Casein A2/A2 | aAa



BOMAZ ENVOY-ET



SCAN ME FOR MOST
RECENT PROOF

EBI	SEPT. 24 SOURCE	ICBF	REL
EBI 176			68%
Prod. SI	133		89%
Fert. SI	17		63%
Carbon SI	-27		64%
Calv. SI	59		53%
Beef SI	-19		42%
Mgmt. SI	3		58%
Health SI	26		75%



USA AUG 24			
TPI	2783		
PRODUCTION			
Milk Lbs	-45	Daus	123
Fat Lbs	86	Fat %	0.34
Protein Lbs	45	Protein %	0.18
OTHER TRAITS			
DPR	-1.1		
Productive Life	4.4		
SCC	2.78		
TYPE			
PTAT	0.81		
Udder Composite	0.69		
Feet & Legs Composite	0.19		
BCS	0.63		

LINEAR EVALUATION - INTERBULL 2024

Trait	Value	Target	Deviation
STATURE	1.45	1.5	-0.05
CHEST WIDTH	0.16	0.5	-0.34
BODY DEPTH	0.37	1.5	-1.13
ANGULARITY	0.71	1.0	-0.29
RUMP ANGLE	-1.95	-1.0	-0.95
RUMP WIDTH	2.1	2.0	+0.1
REAR LEG SET	-0.75	1.0	-1.75
LOCOMOTION	1.75	1.0	+0.75
FOOT ANGLE	0.81	-0.5	+1.31
FORE UDDER	2.53	3.0	-0.47
REAR UDDER	2.59	2.5	+0.09
UDDER SUPPORT	1.81	2.5	-0.69
UDDER DEPTH	1.87	2.5	-0.63
TEAT PLACEMENT	0.61	2.0	-1.39
TEAT LENGTH	0.76	0.0	+0.76
BCS	-0.15	0.0	-0.15
OVERALL TYPE	2.21	2.0	+0.21
OVERALL UDDER	2.04	2.5	-0.46
OVERALL F&L	1.24	1.0	+0.24

PRODUCTION					
Milk Kg	Fat Kg	Protein Kg	Solid Kg	Fat %	Prot %
247	26	17	43	0.27	0.15

FERTILITY		CALVING DIFFICULTY			
Calving Interval	Survival	Records	Dairy Heifer Diff	Rel	Risk
1	2.3	0	4.85	60	Low

MANAGEMENT		HEALTH			
Milk Speed	Temp	SCC	Mastitis	Lameness	TB
-37.8	-0.25	-0.32	-0.11	-0.05	8

- **Superb bull to improve fat and protein %**
- **Robot ready, adds teat length with good teat placement**
- **+2 for Udders & +2.1 for Overall Type Score**
- **High Health SI**

SIRE: N-SPRINGHOPE ESCALATE-ET	MS: BOMAZ ALTAROBSON-ET	MGS: WOODCREST MOGUL YODER-ET
DAM: BOMAZ ROBSON 49-ET Vg 87	MD: BOMAZ YODER 6993-ET VG8	MGD: BOMAZ FRIDO 6185 VG86

PRE-ORDER

GENOMIC

GENOMIC

BTD956444502861
SBG MECCA P

PED

DOB
17-Oct-20

HERD BOOK NUMBER
HOLGBRM956444502861

HO (100%) | Beta Casein A2/A2 | aAa 243



DAM: Boghill Glamour Hurricane Carlin D, EX93 26stars



SCAN ME FOR MOST RECENT PROOF

EBI SEPT. 24 SOURCE ICBF REL

EBI 130 56%

Table with 2 columns: Trait, Value, and Percentage. Rows include Prod. SI, Fert. SI, Carbon SI, Calv. SI, Beef SI, Maint. SI, Mgmt. SI, and Health SI.

Table with 3 columns: Trait, Value, and Percentage. Rows include USA AUG 24 TPI 3028 PRODUCTION, OTHER TRAITS, and TYPE.

LINEAR EVALUATION - INTERBULL 2024

Table with 3 columns: Trait, Value, and Percentage. Rows include STATURE, CHEST WIDTH, BODY DEPTH, ANGULARITY, RUMP ANGLE, RUMP WIDTH, REAR LEG SET, LOCOMOTION, FOOT ANGLE, FORE UDDER, REAR UDDER, UDDER SUPPORT, UDDER DEPTH, TEAT PLACEMENT, TEAT LENGTH, BCS, OVERALL TYPE, OVERALL UDDER, and OVERALL F&L.

PRODUCTION

Table with 6 columns: Milk Kg, Fat Kg, Protein Kg, Solid Kg, Fat %, Prot %

FERTILITY

Table with 2 columns: Calving Interval, Survival

CALVING DIFFICULTY

Table with 5 columns: Records, Dairy Heifer Diff, Rel, Risk

MANAGEMENT

Table with 2 columns: Milk Speed, Temp

HEALTH

Table with 6 columns: SCC, Mastitis, Lameness, TB, DTRS, HERDS

- New Outcross Sire
Heterozygous Polled Gene
50% of calves are polled
MGDdam classified as VG 87 to Dam EX93

FR7923
(IG)TOBERMARTIN FRANCIS Pp

PED

DOB
18/01/2021

HERD BOOK NUMBER
HOLIRLM224111351663

HO 97%, FR 3% | Beta Casein A2/A2 | aAa 243165



Bred by James Egan, Tarbert, Co Kerry



SCAN ME FOR MOST RECENT PROOF

HETEROZYGOUS POLLED | HIGH TYPE SIRE | A2 A2

EBI SEPT. 24 SOURCE ICBF REL

EBI 243 70%

Table with 2 columns: Trait, Value, and Percentage. Rows include Prod. SI, Fert. SI, Carbon SI, Calv. SI, Beef SI, Maint. SI, Mgmt. SI, and Health SI.

Table with 7 columns: DAM YIELDS, Milk KGS, Fat KGS, PTN KGS, Solids, Fat %, PTN %

LINEAR EVALUATION - INTERBULL 2024

Table with 3 columns: Trait, Value, and Percentage. Rows include STATURE, CHEST WIDTH, BODY DEPTH, ANGULARITY, RUMP ANGLE, RUMP WIDTH, REAR LEG SET, LOCOMOTION, FOOT ANGLE, FORE UDDER, REAR UDDER, UDDER SUPPORT, UDDER DEPTH, TEAT PLACEMENT, TEAT LENGTH, BCS, OVERALL TYPE, OVERALL UDDER, and OVERALL F&L.

PRODUCTION

Table with 6 columns: Milk Kg, Fat Kg, Protein Kg, Solid Kg, Fat %, Prot %

FERTILITY

Table with 2 columns: Calving Interval, Survival

CALVING DIFFICULTY

Table with 5 columns: Records, Dairy Heifer Diff, Rel, Risk

MANAGEMENT

Table with 2 columns: Milk Speed, Temp

HEALTH

Table with 6 columns: SCC, Mastitis, Lameness, TB, DTRS, HERDS

- Jeronimo P Son, from an EX90 Perseus Daughter
Heterozygous Polled Gene
50% of calves are polled
4% Protein Dam

Table with 3 columns: SIRE, MS, MGS, DAM, MD, MGD

Table with 3 columns: SIRE, MS, MGS, DAM, MD, MGD

PRE-ORDER

GENOMIC

APX000014213332 PED
DREW HOLME LEYHIGH PP

DOB
03-Dec-21

HERD BOOK NUMBER
HOLCANM000014213332

HO (100%) | Beta Casein A1/A2 | aAa 324156



DAM: DREW HOLME LAMBDA LEYSURE P VG88



SCAN ME FOR MOST RECENT PROOF

EBI SEPT. 24 SOURCE	ICBF	REL
EBI 103	57%	
Prod. SI	96	77%
Fert. SI	-13	44%
Carbon SI	-28	54%
Calv. SI	48	45%
Beef SI	-24	39%
Maint. SI	-5	34%
Mgmt. SI	4	58%
Health SI	24	72%

USA AUG 24	
TPI 2603	
PRODUCTION	
Milk Lbs	643 Daus 0
Fat Lbs	70 Fat % 0.17
Protein Lbs	36 Protein % 0.06
OTHER TRAITS	
DPR	-1.4
Productive Life	0.9
SCC	2.87
TYPE	
PTAT	1.91
Udder Composite	2.12
Feet & Legs Composite	0.91
BCS	0.79

LINEAR EVALUATION - INTERBULL 2024

Trait	Value	Target	Deviation
STATURE	2.27	2.00	+0.27
CHEST WIDTH	1.06	1.00	+0.06
BODY DEPTH	2.03	2.00	+0.03
ANGULARITY	0.89	0.80	+0.09
RUMP ANGLE	1.19	1.10	+0.09
RUMP WIDTH	2.08	2.00	+0.08
REAR LEG SET	1.41	1.40	+0.01
LOCOMOTION	1.75	1.70	+0.05
FOOT ANGLE	1.37	1.30	+0.07
FORE UDDER	4.91	4.50	+0.41
REAR UDDER	4.41	4.00	+0.41
UDDER SUPPORT	2.27	2.20	+0.07
UDDER DEPTH	3.77	3.50	+0.27
TEAT PLACEMENT	2.13	2.10	+0.03
TEAT LENGTH	-1.49	-1.50	+0.01
BCS	1.03	1.00	+0.03
OVERALL TYPE	3.39	3.20	+0.19
OVERALL UDDER	3.43	3.20	+0.23
OVERALL F&L	1.52	1.50	+0.02

PRODUCTION					
Milk Kg	Fat Kg	Protein Kg	Solid Kg	Fat %	Prot %
489	24	15	39	0.08	-0.02

FERTILITY		CALVING DIFFICULTY			
Calving Interval	Survival	Records	Dairy Heifer Diff	Rel	Risk
1.26	0.27	0	6.22	55	Low

MANAGEMENT		HEALTH				DTRS
Milk Speed	Temp	SCC	Mastitis	Lameness	TB	HERDS
-40.47	-0.24	-0.35	-0.1	-0.02	8.22	0

- **Homozygous polled, going back to Idee Lustre EX95**
- **+3.4 for both Udders & Overall Type Score**
- **+ 12 conformation in Canada**
- **16 generations VG/EX**

SIRE: VOGUE A2P2-PP	MS: FARNEAR DELTA-LAMBDA-ET	MGS: OCD Eraser zipit-p
DAM: DREW HOLME LAMBDA LEYSURE P VG88	MD: DREW HOLME ZIPIT LEYSURE P EX90	MGD: DREW HOLME WINDBROOK LEMONADE VG 87

PRE-ORDER

GENOMIC

FR9818 PED
WINSTAR MEADOW-PP-ET

DOB
31/03/2021

HERD BOOK NUMBER
HOL840M003224809815

HO 100% | Beta Casein A1/A2 | aAa



MGD: Seagull-Bay Karamae P VG-86



SCAN ME FOR MOST RECENT PROOF

EBI SEPT. 24 SOURCE	ICBF	REL
EBI 155	57%	
Prod. SI	130	76%
Fert. SI	16	42%
Carbon SI	-26	53%
Calv. SI	54	48%
Beef SI	-26	37%
Maint. SI	-5	32%
Mgmt. SI	-9	58%
Health SI	21	72%

USA AUG 24	
TPI 2934	
PRODUCTION	
Milk Lbs	114 Daus 0
Fat Lbs	121 Fat % 0.45
Protein Lbs	37 Protein % 0.13
OTHER TRAITS	
DPR	-0.1
Productive Life	4.6
SCC	2.91
TYPE	
PTAT	0.77
Udder Composite	1.27
Feet & Legs Composite	0.54
BCS	-0.66

LINEAR EVALUATION - INTERBULL 2024

Trait	Value	Target	Deviation
STATURE	0.89	0.80	+0.09
CHEST WIDTH	-0.02	0.00	-0.02
BODY DEPTH	0.34	0.30	+0.04
ANGULARITY	1.24	1.20	+0.04
RUMP ANGLE	1.52	1.50	+0.02
RUMP WIDTH	1.06	1.00	+0.06
REAR LEG SET	0.81	0.80	+0.01
LOCOMOTION	1.69	1.60	+0.09
FOOT ANGLE	-0.71	-0.70	-0.01
FORE UDDER	3.34	3.00	+0.34
REAR UDDER	3.07	2.80	+0.27
UDDER SUPPORT	2.08	2.00	+0.08
UDDER DEPTH	2.66	2.50	+0.16
TEAT PLACEMENT	1.71	1.70	+0.01
TEAT LENGTH	0.08	0.00	+0.08
BCS	-0.36	-0.30	-0.06
OVERALL TYPE	2.65	2.50	+0.15
OVERALL UDDER	2.51	2.40	+0.11
OVERALL F&L	1.19	1.10	+0.09

PRODUCTION					
Milk Kg	Fat Kg	Protein Kg	Solid Kg	Fat %	Prot %
449	32	18	50	0.23	0.04

FERTILITY		CALVING DIFFICULTY			
Calving Interval	Survival	Records	Dairy Heifer Diff	Rel	Risk
0.6	1.9	0	3.75	52	Low

MANAGEMENT		HEALTH			
Milk Speed	Temp	SCC	Mastitis	Lameness	TB
-7.9	-0.32	-0.32	-0.13	-0.1	10.98

- **Mendel P son from the Roxy cow Family**
- **Homozygous Polled**
- **100% of calves are polled**
- **+ 2.5 Udder and +2.65 Overall Type Score**

SIRE: WINSTAR MENDEL-P-ET	MS: PINE-TREE ACURA-ET	MGS: MR MOGUL DELTA 1427-ET
DAM: WINSTAR ACURA 6379-ET	MD: SEAGULL-BAY KARAMAE P VG86	MGD: SEAGULL-BAY R KANDACE P-ET

PRE-ORDER GENOMIC

FR1686 HELLENDER BRANDY P PED

DOB 13/11/2021 HERD BOOK NUMBER HOLCHEM120164977597

HO 100% | Beta Casein A1/A1 | aAa



DAM: HELLENDER POWER BAILEYS EX93



SCAN ME FOR MOST RECENT PROOF

EBI SEPT. 24 SOURCE ICBF REL

EBI 110 58%

Prod. SI	63	77%
Fert. SI	46	49%
Carbon SI	-19	54%
Calv. SI	41	43%
Beef SI	-37	33%
Maint. SI	-5	33%
Mgmt. SI	-1	60%
Health SI	23	74%

USA AUG 24		
TPI	2349	
PRODUCTION		
Milk Lbs	-9	Daus 0
Fat Lbs	16	Fat % 0.06
Protein Lbs	10	Protein % 0.04
OTHER TRAITS		
DPR	-1.5	
Productive Life	2.7	
SCC	2.68	
TYPE		
PTAT	2.22	
Udder Composite	2.09	
Feet & Legs Composite	1.3	
BCS	0.57	

LINEAR EVALUATION - INTERBULL 2024

STATURE	2.75				
CHEST WIDTH	-2.02				
BODY DEPTH	-0.62				
ANGULARITY	1.56				
RUMP ANGLE	-0.34				
RUMP WIDTH	1.29				
REAR LEG SET	-2.26				
LOCOMOTION	5.56				
FOOT ANGLE	2.79				
FORE UDDER	5.45				
REAR UDDER	4.6				
UDDER SUPPORT	3.38				
UDDER DEPTH	5.67				
TEAT PLACEMENT	2.16				
TEAT LENGTH	-0.77				
BCS	-0.94				
OVERALL TYPE	4.7				
OVERALL UDDER	4.16				
OVERALL F&L	3.96				

PRODUCTION

Milk Kg	Fat Kg	Protein Kg	Solid Kg	Fat %	Prot %
471	15	13	28	-0.05	-0.05

FERTILITY CALVING DIFFICULTY

Calving Interval	Survival	Records	Dairy Heifer Diff	Rel	Risk
-1.1	2.5	0	6.32	53	High*

MANAGEMENT HEALTH DTRS

Milk Speed	Temp	SCC	Mastitis	Lameness	TB	DTRS
-37.6	-0.35	-0.21	-0.07	-0.05	6.6	0

- Superstar from Switzerland. Red & Polled
- Combining Production/Fitness/Conformation
- Dam was Grand Champion Junior Expo Bulle 2023
- 5 generations EX

SIRE: TRENT-WAY-JS RONALD-ET	MS: SWISSBEC POWER	MGS: TIGER-LILY LADD P-RED-ET
DAM: HELLENDER POWER BAILEYS EX93	MD: HELLENDER LADD BREYA P EX92	MGD: HELLENDER HVEZDA BELIZE

PRE-ORDER GENOMIC

FR1077 MAT RED Pp PED

DOB 19/09/2021 HERD BOOK NUMBER HOLDEUM000364054891

HO 100% | Beta Casein A1/A2 | aAa 243



DAM: MAR PAULA VG86



SCAN ME FOR MOST RECENT PROOF

EBI SEPT. 24 SOURCE ICBF REL

EBI 172 57%

Prod. SI	119	76%
Fert. SI	26	44%
Carbon SI	-29	53%
Calv. SI	51	42%
Beef SI	-11	36%
Maint. SI	-11	32%
Mgmt. SI	-2	59%
Health SI	29	73%

USA AUG 24		
TPI	2786	
PRODUCTION		
Milk Lbs	802	Daus 0
Fat Lbs	73	Fat % 0.16
Protein Lbs	51	Protein % 0.1
OTHER TRAITS		
DPR	-1	
Productive Life	4.1	
SCC	2.68	
TYPE		
PTAT	1.07	
Udder Composite	1.3	
Feet & Legs Composite	0.11	
BCS	0.38	

LINEAR EVALUATION - INTERBULL 2024

STATURE	1.59				
CHEST WIDTH	-0.24				
BODY DEPTH	0.5				
ANGULARITY	1.12				
RUMP ANGLE	-0.87				
RUMP WIDTH	2.87				
REAR LEG SET	1.42				
LOCOMOTION	1.34				
FOOT ANGLE	0.14				
FORE UDDER	4.45				
REAR UDDER	3.96				
UDDER SUPPORT	3.01				
UDDER DEPTH	4.21				
TEAT PLACEMENT	1.87				
TEAT LENGTH	-0.13				
BCS	-1.19				
OVERALL TYPE	3.05				
OVERALL UDDER	3.3				
OVERALL F&L	1.01				

PRODUCTION

Milk Kg	Fat Kg	Protein Kg	Solid Kg	Fat %	Prot %
505	24	19	43	0.07	0.04

FERTILITY CALVING DIFFICULTY

Calving Interval	Survival	Records	Dairy Heifer Diff	Rel	Risk
0.7	2.8	0	4.99	52	Low

MANAGEMENT HEALTH DTRS

Milk Speed	Temp	SCC	Mastitis	Lameness	TB	DTRS
-22.6	-0.25	-0.38	-0.1	-0.04	7.48	0

- New Outcross Red Sire
- No Rubels/Ryder/Ranger/Conan
- Heterozygous Polled
- 50% of calves are polled

SIRE: MATTY PRDC	MS: CAUDUMER SOLITAIR P	MGS: ZIMMERVIEW LUCKY PP-RED-ET
DAM: MAR PAULA VG86	MD: PIPPA RED GP82	MGD: EEKE HO PETTI GP84

PRE-ORDER

GENOMIC

FR1003 3STAR OH SHARP RED

PED

DOB
28/11/2021

HERD BOOK NUMBER
HOLNLDM000632007873

HO 100% | Beta Casein A1/A2 | aAa



3STAR OH SHARP RED



SCAN ME FOR MOST RECENT PROOF

EBI	SEPT. 24 SOURCE	ICBF	REL
153			56%
Prod. SI	118		76%
Fert. SI	15		44%
Carbon SI	-31		53%
Calv. SI	51		41%
Beef SI	-18		36%
Maint. SI	-12		32%
Mgmt. SI	-2		59%
Health SI	32		73%

USA AUG 24			
TPI	2889		
PRODUCTION			
Milk Lbs	1454	Daus	0
Fat Lbs	84	Fat %	0.10
Protein Lbs	62	Protein %	0.06
OTHER TRAITS			
DPR	-1		
Productive Life	4.4		
SCC	2.67		
TYPE			
PTAT	1.97		
Udder Composite	1.18		
Feet & Legs Composite	0.7		
BCS	-0.15		

HEALTH HIGH TYPE SIRE COMPONENT SPECIALIST SEXED SEMEN ONLY

LINEAR EVALUATION - INTERBULL 2024

STATURE	2.25				
CHEST WIDTH	-1.45				
BODY DEPTH	1.29				
ANGULARITY	2.62				
RUMP ANGLE	-1.83				
RUMP WIDTH	1.43				
REAR LEG SET	2.33				
LOCOMOTION	1.94				
FOOT ANGLE	-0.55				
FORE UDDER	2.93				
REAR UDDER	3.57				
UDDER SUPPORT	1.81				
UDDER DEPTH	1.65				
TEAT PLACEMENT	1.12				
TEAT LENGTH	2.9				
BCS	-1.96				
OVERALL TYPE	2.82				
OVERALL UDDER	2.67				
OVERALL F&L	1.86				

PRODUCTION					
Milk Kg	Fat Kg	Protein Kg	Solid Kg	Fat %	Prot %
584	23	21	44	0.01	0.02

FERTILITY		CALVING DIFFICULTY			
Calving Interval	Survival	Records	Dairy Heifer Diff	Rel	Risk
1.5	2.8	0	6.29	52	Moderate

MANAGEMENT		HEALTH			
Milk Speed	Temp	SCC	Mastitis	Lameness	TB
-28.2	-0.3	-0.33	-0.11	-0.07	6.79

- New Red Outcross Sire
- Top 5% to increase TB resistance
- Improves Udder Quality and Feet & Legs
- Breeds healthier cows

SIRE: ZFZ 74596	MS: WIL 43407	MGS: MR SALVATORE RC-ET
DAM: EXLOER K&L OH SHARMA	MD: SUNNYRED	MGD: SCHREUR SUNNY RF

PRE-ORDER

INTERNATIONAL DTR PROVEN

DTRS 0

HERDS 0

FR8343 KOEPON OH RYDER RED

PED

DOB
24/11/2019

HERD BOOK NUMBER
HOLNLDM000571815588

HO 100% | Beta Casein A1/A2 | aAa 342



DAU GIH Ryder Be Happy-2yrs VG86



SCAN ME FOR MOST RECENT PROOF

EBI	SEPT. 24 SOURCE	ICBF	REL
143			62%
Prod. SI	101		74%
Fert. SI	51		47%
Carbon SI	-26		57%
Calv. SI	39		87%
Beef SI	-29		40%
Maint. SI	-7		34%
Mgmt. SI	-10		61%
Health SI	23		75%

USA AUG 24			
TPI	2750		
PRODUCTION			
Milk Lbs	1057	Daus	16
Fat Lbs	54	Fat %	0.05
Protein Lbs	41	Protein %	0.03
OTHER TRAITS			
DPR	-1.5		
Productive Life	5.2		
SCC	2.58		
TYPE			
PTAT	2.13		
Udder Composite	2.22		
Feet & Legs Composite	1.66		
BCS	0.41		

HEALTH HIGH TYPE SIRE COMPONENT SPECIALIST SEXED SEMEN ONLY

LINEAR EVALUATION - INTERBULL 2024

STATURE	1.66				
CHEST WIDTH	-0.55				
BODY DEPTH	0.01				
ANGULARITY	1.11				
RUMP ANGLE	2.18				
RUMP WIDTH	1.77				
REAR LEG SET	0.62				
LOCOMOTION	2.16				
FOOT ANGLE	0.99				
FORE UDDER	3.92				
REAR UDDER	5.38				
UDDER SUPPORT	2.98				
UDDER DEPTH	3.01				
TEAT PLACEMENT	2.83				
TEAT LENGTH	2.31				
BCS	-0.07				
OVERALL TYPE	3.79				
OVERALL UDDER	3.84				
OVERALL F&L	1.82				

PRODUCTION					
Milk Kg	Fat Kg	Protein Kg	Solid Kg	Fat %	Prot %
609	20	19	40	-0.05	-0.02

FERTILITY		CALVING DIFFICULTY			
Calving Interval	Survival	Records	Dairy Heifer Diff	Rel	Risk
-2.2	1.9	95	6.51	85	Low

MANAGEMENT		HEALTH			
Milk Speed	Temp	SCC	Mastitis	Lameness	TB
-27.2	-0.51	-0.3	-0.11	-0.04	8.29

- Full brother to Ranger Red
- Dam Global Impact Cow Of The Year 2021
- From the Hiwatha/Prudence cow family
- Milking Daughters really impressive

SIRE: HOGERHORST DG OH RUBELS-RED	MS: MR SALVATORE RC-ET	MGS: EDG RUBICON-ET
DAM: LAKESIDE UPS RED RANGE VG 86	MD: DE OOSTERHOF DG ROSE D VG89	MGD: TELGTER AIKMAN DOREEN

RED

PRE-ORDER

INTERNATIONAL DTR PROVEN

DTRS 0

HERDS 0

GENOMIC

FR9740 HOOGERHORST DG OH RUBELS-RED PED

DOB 20/01/2018

HERD BOOK NUMBER HOLNLDM000679520401

HO 100% | Beta Casein A1/A2 | aAa 315



SHOW STOPPER

DTR: Willsbro Rubels Rachel Red-2 yrs VG87



SCAN ME FOR MOST RECENT PROOF

EBI SEPT. 24 SOURCE ICBF	REL
EBI 87	80%
Prod. SI	115 93%
Fert. SI	-2 85%
Carbon SI	-35 76%
Calv. SI	18 87%
Beef SI	-24 49%
Maint. SI	-11 41%
Mgmt. SI	-2 62%
Health SI	27 77%



HEALTH



HIGH TYPE SIRE



COMPONENT SPECIALIST



SEXED SEMEN ONLY

USA AUG 24		
TPI	2736	
PRODUCTION		
Milk Lbs	1183	Daus 4418
Fat Lbs	67	Fat % 0.08
Protein Lbs	52	Protein % 0.05
OTHER TRAITS		
DPR	-2.9	
Productive Life	3	
SCC	2.76	
TYPE		
PTAT	2.47	
Udder Composite	1.76	
Feet & Legs Composite	1.23	
BCS	0.14	

LINEAR EVALUATION - INTERBULL 2024

Trait	Value	Target
STATURE	1.98	1.00
CHEST WIDTH	0.14	0.00
BODY DEPTH	1.65	0.00
ANGULARITY	1.97	0.00
RUMP ANGLE	0.9	0.00
RUMP WIDTH	4.05	0.00
REAR LEG SET	3.63	0.00
LOCOMOTION	2.1	0.00
FOOT ANGLE	-1.16	0.00
FORE UDDER	3.11	0.00
REAR UDDER	3.84	0.00
UDDER SUPPORT	1.9	0.00
UDDER DEPTH	2.7	0.00
TEAT PLACEMENT	3.39	0.00
TEAT LENGTH	0.92	0.00
BCS	-1.38	0.00
OVERALL TYPE	2.6	0.00
OVERALL UDDER	2.87	0.00
OVERALL F&L	1.35	0.00

PRODUCTION					
Milk Kg	Fat Kg	Protein Kg	Solid Kg	Fat %	Prot %
616	24	20	45	0	-0.01

FERTILITY		CALVING DIFFICULTY			
Calving Interval	Survival	Records	Dairy Heifer Diff	Rel	Risk
1.1	1	64	7.9	88	Moderate

MANAGEMENT		HEALTH			
Milk Speed	Temp	SCC	Mastitis	Lameness	TB
-33.1	-0.34	-0.35	-0.09	-0.07	7.97

- Great satisfaction with daughters calving in
- Breeds deep bodied cows, with incredible udder attachments
- Great production, adds teat length
- aAa 315

SIRE: ENDCO ARGO RC-ET	MS: EDG RUBICON-ET	MGS: GEN-I-BEQ AIKMAN VG 86
DAM: DE OOSTERHOF DG RUBELLIA	MD: DE OOSTERHOF DG RUBELLIA VG86 2YR	MGD: ELAINE

FR7860 (IG)DOONMANAGH REDCLIFF PED

DOB 09/02/2021

HERD BOOK NUMBER HOLIRLM214299411513

HO 81%, FR 19% | Beta Casein A1/A2 | aAa 423615 | HH5C



Bred by John P Galvin, Lispole, Co Kerry

DAM: DOONMANAGH 4187 CHERRY 2 1331 VG 87



SCAN ME FOR MOST RECENT PROOF



EBI SEPT. 24 SOURCE ICBF	REL
EBI 286	69%
Prod. SI	100 82%
Fert. SI	125 46%
Carbon SI	0 66%
Calv. SI	47 96%
Beef SI	-5 63%
Maint. SI	3 50%
Mgmt. SI	3 60%
Health SI	13 78%

LINEAR EVALUATION - INTERBULL 2024

Trait	Value	Target
STATURE	-0.07	0.00
CHEST WIDTH	0.48	0.00
BODY DEPTH	-0.64	0.00
ANGULARITY	-0.76	0.00
RUMP ANGLE	-1.23	0.00
RUMP WIDTH	-1.15	0.00
REAR LEG SET	-2.03	0.00
LOCOMOTION	-0.99	0.00
FOOT ANGLE	0.89	0.00
FORE UDDER	2.03	0.00
REAR UDDER	0.43	0.00
UDDER SUPPORT	-0.1	0.00
UDDER DEPTH	2.19	0.00
TEAT PLACEMENT	-0.82	0.00
TEAT LENGTH	-2.69	0.00
BCS	1.28	0.00
OVERALL TYPE	0.52	0.00
OVERALL UDDER	0.86	0.00
OVERALL F&L	-0.57	0.00

DAM YIELDS	Milk KGS	Fat KGS	PTN KGS	Solids	Fat %	PTN %
Highest Lact No. 3	7182	347	277	624	4.83	3.86
Average Across Lifetime	6400	303	247	550	4.73	3.87
Lifetime Production: 3 Lact	19199	909	742	1651	4.73	3.86

PRODUCTION					
Milk Kg	Fat Kg	Protein Kg	Solid Kg	Fat %	Prot %
40	17	12	28	0.26	0.18

FERTILITY		CALVING DIFFICULTY			
Calving Interval	Survival	Records	Dairy Heifer Diff	Rel	Risk
-6.5	3.5	1018	5.09	90	Low

MANAGEMENT		HEALTH				DTRS
Milk Speed	Temp	SCC	Mastitis	Lameness	TB	0
-32.2	-0.2	-0.13	-0.09	-0.07	9.27	0

- Easy calving for Heifers
- Red Bull from impressive Perseus VG87 Dam
- Will Add Strength
- Real % improver

SIRE: GLENABOY RONALD	MS: WESTCOAST PERSEUS VG 87	MGS: DONEEN MARLEEN HUGO
DAM: DOONMANAGH 4187 CHERRY 2 1331 VG 87	MD: DOONMANAGH DEU CHERRY EX 90 4E	MGD: DOONMANAGH FERRARI CHERRY

PRE-ORDER

GENOMIC

FR8730 COMESTAR LEMAGIC

PED

DOB

24/01/2021

HERD BOOK NUMBER

HOLCANM000120461050

HO 100%

Beta Casein
A2/A2

aAa
432615

SHOW
STOPPER



Dam, COMESTAR LAMAGIC IMPRESSION EX-93



SCAN ME FOR MOST RECENT PROOF

EBI	SEPT. 24 SOURCE	ICBF	REL
66	66	64%	
Prod. SI	76	78%	
Fert. SI	16	50%	
Carbon SI	-29	60%	
Calv. SI	20	79%	
Beef SI	-26	45%	
Maint. SI	-13	38%	
Mgmt. SI	4	62%	
Health SI	18	75%	

USA AUG 24			
TPI 2303			
PRODUCTION			
Milk Lbs	255	Daus	0
Fat Lbs	35	Fat %	0.1
Protein Lbs	17	Protein %	0.03
OTHER TRAITS			
DPR	-2		
Productive Life	-0.1		
SCC	2.81		
TYPE			
PTAT	2.38		
Udder Composite	1.61		
Feet & Legs Composite	0.67		
BCS	1.72		

HEALTH SEXED SEMEN A2 A2 ROBOT READY

LINEAR EVALUATION - INTERBULL 2024

STATURE	2.59				
CHEST WIDTH	-0.28				
BODY DEPTH	1.43				
ANGULARITY	2.32				
RUMP ANGLE	0.59				
RUMP WIDTH	3.92				
REAR LEG SET	-0.12				
LOCOMOTION	3.4				
FOOT ANGLE	1.26				
FORE UDDER	3.58				
REAR UDDER	4.14				
UDDER SUPPORT	2.88				
UDDER DEPTH	2.9				
TEAT PLACEMENT	1.28				
TEAT LENGTH	0.35				
BCS	-1.43				
OVERALL TYPE	3.29				
OVERALL UDDER	2.75				
OVERALL F&L	2.93				

PRODUCTION

Milk Kg	Fat Kg	Protein Kg	Solid Kg	Fat %	Prot %
559	20	14	34	-0.03	-0.07

FERTILITY		CALVING DIFFICULTY			
Calving Interval	Survival	Records	Dairy Heifer Diff	Rel	Risk
-0.3	0.9	20	8.76	67	High

MANAGEMENT		HEALTH				DTRS
Milk Speed	Temp	SCC	Mastitis	Lameness	TB	HERDS
-29.3	-0.14	-0.18	-0.07	-0.01	6.77	0

- Dam EX93 and MGDam EX94
- Plus 10 on overall Canadian Conformation
- From Laurie Sheik Cow Family
- No Lambda/Alligator/Sidekick in pedigree

SIRE: STANTONS CHIEF-ET	MS: MONUMENT IMPRESSION-ET EX 95	MGS: VAL-BISSON DOORMAN EX 90
DAM: COMESTAR LAMAGIC IMPRESSION EX93	MD: COMESTAR LAMADONA DOORMAN EX 94	MGD: COMESTAR LAUTAMAI MAN O MAN VG 87

PRE-ORDER

GENOMIC

FR8694 COOKIECUTTER HOLYSMOKES-ET

PED

DOB

07/09/2020

HERD BOOK NUMBER

HOL840M003212874372

HO 100%

Beta Casein
A1/A2

aAa
432156



COOKIECUTTER SLM HOPLITE GRANDDAM



SCAN ME FOR MOST RECENT PROOF

EBI	SEPT. 24 SOURCE	ICBF	REL
155	155	62%	
Prod. SI	142	84%	
Fert. SI	13	44%	
Carbon SI	-37	58%	
Calv. SI	29	62%	
Beef SI	-16	39%	
Maint. SI	-12	34%	
Mgmt. SI	3	59%	
Health SI	33	74%	

USA AUG 24			
TPI 3064			
PRODUCTION			
Milk Lbs	1571	Daus	26
Fat Lbs	99	Fat %	0.14
Protein Lbs	71	Protein %	0.08
OTHER TRAITS			
DPR	-1.1		
Productive Life	4.1		
SCC	2.7		
TYPE			
PTAT	1.93		
Udder Composite	2.21		
Feet & Legs Composite	0.85		
BCS	-0.01		

HEALTH HIGH TYPE SIRE SEXED SEMEN

LINEAR EVALUATION - INTERBULL 2024

STATURE	1.86				
CHEST WIDTH	-0.29				
BODY DEPTH	0.77				
ANGULARITY	1.58				
RUMP ANGLE	1.28				
RUMP WIDTH	0.91				
REAR LEG SET	-0.15				
LOCOMOTION	1.72				
FOOT ANGLE	1.58				
FORE UDDER	3.93				
REAR UDDER	4.25				
UDDER SUPPORT	2.37				
UDDER DEPTH	3.02				
TEAT PLACEMENT	1.85				
TEAT LENGTH	-1.48				
BCS	-0.47				
OVERALL TYPE	3.39				
OVERALL UDDER	3.53				
OVERALL F&L	1.14				

PRODUCTION

Milk Kg	Fat Kg	Protein Kg	Solid Kg	Fat %	Prot %
629	30	23	53	0.08	0.03

FERTILITY		CALVING DIFFICULTY			
Calving Interval	Survival	Records	Dairy Heifer Diff	Rel	Risk
0.6	1.7	7	7.65	59	Moderate

MANAGEMENT		HEALTH				DTRS
Milk Speed	Temp	SCC	Mastitis	Lameness	TB	HERDS
-36.6	-0.23	-0.3	-0.09	-0.09	6.08	0

- International sire of sons
- High production sire, +170 CFP
- + 3.5 Udder and +3.4 Overall Type Score
- High health and TB resistant sire

SIRE: AOT HIGHJUMP-ET	MS: S-S-1 PR RENEGADE-ET	MGS: OCD SPRING SLAMDUNK-ET
DAM: COOKIECUTTER HOLLYN-ET	MD: COOKIECUTTER SLM HOPLITE-ET VG88	MGD: COOKIECUTTER RUBI HOMEY-ET

Mystique Lambda Anis VG89



GRANDDAM - Mystique Extreme Abricot EX-94-3E

Mystique Lambda Anis VG89, the dam of 3 new exciting Semex sires (Ambrose, Anahita and Aneesh) is a genetic powerhouse and hails from a prominent Canadian cow family. Her impressive lineage hails back as far as the mid 80's to the world-renowned Puget-Sound Sheik who became known for breeding cows with excellent type and impressive components. Many of whom, became bull-dams with their sons entering into studs across Canada.

One of the most impressive daughters of Sheik was Roycedale Sheik Adrienne EX, whose genetics lives on 10 generations (5 EX and VG) later in Mystique Lambda Anis VG89 4YR / 89MS. **Not to mention, the dam of Anis, Mystique Extreme Abricot EX-94-3E, was awarded the prestigious '2023 Canadian Cow of the Year' award and has not only produced over 104,400 Kg of Milk across 6 lactations, but has also produced 6 EX daughters.** Anis originally started her life in the Mystique herd located in Mirabell, but 2 years ago was sold into the impressive Progenesis programme. She has already made her mark within the programme with the 3 new Semex sires we are proud to present, Progenesis Ambrose (sired by Ranger Red), Progenesis Anahita (sires by Westcoast Alcove) and Progenesis Aneesh (sired by MB-Luckylady Bullseye). These sires have the impressive ability to combine high type and high indexes which make this Cow Family very special. So, if it's your next show winner or your next brood cow you want to breed, why not try some of these sires on offer.

PRE-ORDER **GENOMIC**
FR9830 PROGENESIS AMBROSE PED
 DOB: 22/01/2022 HERD BOOK NUMBER: HOLCANM000014227002
 HO 100% | Beta Casein A1/A2 | aAa 423561



Dam: Mystique Lambda Anis VG 89



SCAN ME FOR MOST RECENT PROOF

EBI SEPT. 24	SOURCE	ICBF	REL
EBI 80			56%
Prod. SI 95			76%
Fert. SI 13			38%
Carbon SI -31			53%
Calv. SI 36			50%
Beef SI -34			39%
Maint. SI -12			34%
Mgmt. SI -2			59%
Health SI 15			73%

USA AUG 24	
TPI 2672	
PRODUCTION	
Milk Lbs	1124 Daus 0
Fat Lbs	69 Fat % 0.1
Protein Lbs	37 Protein % 0.01
OTHER TRAITS	
DPR	-2.9
Productive Life	3.1
SCC	2.83
TYPE	
PTAT	2.58
Udder Composite	2.12
Feet & Legs Composite	1.01
BCS	0.68

LINEAR EVALUATION - INTERBULL 2024

STATURE	2.36				
CHEST WIDTH	-0.12				
BODY DEPTH	1.49				
ANGULARITY	1.9				
RUMP ANGLE	1.43				
RUMP WIDTH	1.86				
REAR LEG SET	1.34				
LOCOMOTION	2.04				
FOOT ANGLE	0.21				
FORE UDDER	3.73				
REAR UDDER	5.39				
UDDER SUPPORT	3.57				
UDDER DEPTH	2.51				
TEAT PLACEMENT	1.53				
TEAT LENGTH	0.39				
BCS	-0.61				
OVERALL TYPE 3.46					
OVERALL UDDER 3.64					
OVERALL F&L 1.57					

PRODUCTION					
Milk Kg	Fat Kg	Protein Kg	Solid Kg	Fat %	Prot %
632	22	18	40	-0.05	-0.05

FERTILITY		CALVING DIFFICULTY			
Calving Interval	Survival	Records	Dairy Heifer Diff	Rel	Risk
-0.1	1	0	7.56	62	Moderate

MANAGEMENT		HEALTH				DTRS
Milk Speed	Temp	SCC	Mastitis	Lameness	TB	HERDS
-33.2	-0.35	-0.22	-0.03	-0.04	7.88	0

- **New Ranger Red son, red carrier**
- **+12 Canadian conformation score**
- **+3.6 Udder and +3.5 Overall Type Score**

SIRE: 3STAR OH RANGER RED-ET	MS: FARNEAR DELTA-LAMBDA-ET	MGS: SILVERRIDGE V EXTREME
DAM: MYSTIQUE LAMBDA ANIS VG 89	MD: MYSTIQUE EXTREME ABRICOT EX 94	MGD: MYSTIQUE MCCUTCHEN APRIL EX 93

PRE-ORDER **GENOMIC**
FR1091 PROGENESIS ANAHITA PED
 DOB: 13/06/2022 HERD BOOK NUMBER: HOLCANM000014259316
 HO 100% | Beta Casein A2/A2 | aAa 324156



Dam: Mystique Lambda Anis VG 89



SCAN ME FOR MOST RECENT PROOF

EBI SEPT. 24	SOURCE	ICBF	REL
EBI 35			59%
Prod. SI 85			77%
Fert. SI -26			47%
Carbon SI -32			56%
Calv. SI 29			50%
Beef SI -29			41%
Maint. SI -6			35%
Mgmt. SI -1			61%
Health SI 16			75%

USA AUG 24	
TPI 2760	
PRODUCTION	
Milk Lbs	1069 Daus 0
Fat Lbs	78 Fat % 0.14
Protein Lbs	40 Protein % 0.02
OTHER TRAITS	
DPR	-0.8
Productive Life	1.8
SCC	2.98
TYPE	
PTAT	2.64
Udder Composite	2.41
Feet & Legs Composite	1.12
BCS	1.96

LINEAR EVALUATION - INTERBULL 2024

STATURE	2.23				
CHEST WIDTH	1.28				
BODY DEPTH	2.71				
ANGULARITY	1.62				
RUMP ANGLE	2.04				
RUMP WIDTH	1.98				
REAR LEG SET	0.22				
LOCOMOTION	2				
FOOT ANGLE	1.27				
FORE UDDER	4.8				
REAR UDDER	5.16				
UDDER SUPPORT	3.37				
UDDER DEPTH	2.68				
TEAT PLACEMENT	1.57				
TEAT LENGTH	-0.62				
BCS	0.47				
OVERALL TYPE 3.82					
OVERALL UDDER 3.79					
OVERALL F&L 2.18					

PRODUCTION					
Milk Kg	Fat Kg	Protein Kg	Solid Kg	Fat %	Prot %
647	21	17	38	-0.07	-0.08

FERTILITY		CALVING DIFFICULTY			
Calving Interval	Survival	Records	Dairy Heifer Diff	Rel	Risk
2.6	0.5	0	8.05	60	Moderate

MANAGEMENT		HEALTH				DTRS
Milk Speed	Temp	SCC	Mastitis	Lameness	TB	HERDS
-22.2	-0.23	-0.21	-0.05	-0.06	8.42	0

- **Top LPI sire, impressive +3683 LPI**
- **Outstanding Alcove son**
- **+16 Canadian conformation score**

SIRE: WESTCOAST ALCOVE	MS: FARNEAR DELTA-LAMBDA-ET	MGS: SILVERRIDGE V EXTREME
DAM: MYSTIQUE LAMBDA ANIS VG 89	MD: MYSTIQUE EXTREME ABRICOT EX 94	MGD: MYSTIQUE MCCUTCHEN APRIL EX 93

PRE-ORDER **GENOMIC**
APX000014259876 PROGENESIS ANEESH PED
 DOB: 05-Mar-23 HERD BOOK NUMBER: HOLCANM000014259876
 HO (100%) | Beta Casein A2/A2 | aAa 321546



Dam: Mystique Lambda Anis VG 89



SCAN ME FOR MOST RECENT PROOF

EBI SEPT. 24	SOURCE	ICBF	REL
EBI 22			55%
Prod. SI 96			73%
Fert. SI -37			39%
Carbon SI -36			52%
Calv. SI 26			48%
Beef SI -21			39%
Maint. SI -9			35%
Mgmt. SI -1			60%
Health SI 6			74%

USA AUG 24	
TPI 2582	
PRODUCTION	
Milk Lbs	848 Daus 0
Fat Lbs	57 Fat % 0.09
Protein Lbs	42 Protein % 0.06
OTHER TRAITS	
DPR	-3.2
Productive Life	0.6
SCC	2.98
TYPE	
PTAT	3.73
Udder Composite	2.61
Feet & Legs Composite	1.19
BCS	1.85

LINEAR EVALUATION - INTERBULL 2024

STATURE	3.09				
CHEST WIDTH	1.18				
BODY DEPTH	4.09				
ANGULARITY	2.06				
RUMP ANGLE	2.47				
RUMP WIDTH	2.74				
REAR LEG SET	1.74				
LOCOMOTION	2.33				
FOOT ANGLE	-0.06				
FORE UDDER	5.12				
REAR UDDER	5.02				
UDDER SUPPORT	3.58				
UDDER DEPTH	2.36				
TEAT PLACEMENT	2.36				
TEAT LENGTH	-0.24				
BCS	-0.64				
OVERALL TYPE 3.81					
OVERALL UDDER 3.66					
OVERALL F&L 1.46					

PRODUCTION					
Milk Kg	Fat Kg	Protein Kg	Solid Kg	Fat %	Prot %
583	20	18	38	-0.04	-0.03

FERTILITY		CALVING DIFFICULTY			
Calving Interval	Survival	Records	Dairy Heifer Diff	Rel	Risk
3.16	0.24	0	7.9	58	Moderate

MANAGEMENT		HEALTH				DTRS
Milk Speed	Temp	SCC	Mastitis	Lameness	TB	HERDS
-28.42	-0.28	-0.29	-0.05	-0.02	11.48	0

- **Hottest type bull currently available**
- **+18 conformation score in Canada**
- **New Bullseye son**

SIRE: MB-LUCKYLADY BULLSEYE-ET	MS: FARNEAR DELTA-LAMBDA-ET	MGS: SILVERRIDGE V EXTREME
DAM: MYSTIQUE LAMBDA ANIS VG 89	MD: MYSTIQUE EXTREME ABRICOT EX 94	MGD: MYSTIQUE MCCUTCHEN APRIL EX 93

PRE-ORDER

GENOMIC

FR9752 MB-LUCKYLADY BULLSEYE-ET

PED

DOB
04/03/2021

HERD BOOK NUMBER
HOL840M003234629819

HO 100% | Beta Casein A2/A2 | aAa 432165



MB-Luckylady Bullseye-ET



SCAN ME FOR MOST RECENT PROOF



EBI SEPT. 24 SOURCE ICBF REL

EBI **68** 64%

Prod. SI	83	78%
Fert. SI	-7	49%
Carbon SI	-29	60%
Calv. SI	40	75%
Beef SI	-18	46%
Maint. SI	1	40%
Mgmt. SI	-1	62%
Health SI	-1	77%

LINEAR EVALUATION - INTERBULL 2024

STATURE	2.42				
CHEST WIDTH	0.01				
BODY DEPTH	3.15				
ANGULARITY	1.99				
RUMP ANGLE	-0.92				
RUMP WIDTH	4.31				
REAR LEG SET	3.42				
LOCOMOTION	2.37				
FOOT ANGLE	-1.35				
FORE UDDER	3.74				
REAR UDDER	4.78				
UDDER SUPPORT	3.65				
UDDER DEPTH	1.28				
TEAT PLACEMENT	2.68				
TEAT LENGTH	-1.35				
BCS	-1.68				
OVERALL TYPE	3.08				
OVERALL UDDER	2.9				
OVERALL F&L	1.86				

USA AUG 24			
TPI 2558			
PRODUCTION			
Milk Lbs	1051	Daus	0
Fat Lbs	60	Fat %	0.07
Protein Lbs	32	Protein %	0
OTHER TRAITS			
DPR	-2.7		
Productive Life	1.1		
SCC	2.91		
TYPE			
PTAT	3.29		
Udder Composite	2.53		
Feet & Legs Composite	0.9		
BCS	0.76		

PRODUCTION

Milk Kg	Fat Kg	Protein Kg	Solid Kg	Fat %	Prot %
655	21	17	37	-0.08	-0.09

FERTILITY

Calving Interval	Survival
1.5	0.9

CALVING DIFFICULTY

Records	Dairy Heifer Diff	Rel	Risk
12	5.72	70	Low

MANAGEMENT

Milk Speed	Temp
-25.4	-0.25

HEALTH

SCC	Mastitis	Lameness	TB	DTRS
-0.18	-0.03	0	11.05	0

- Dam LadyRose Caught Your Eye EX 95 and Granddam VG 89 2yr
- Canadian Conformation Score +15
- Sired by Farnear Delta Lambda
- International sire of sons

SIRE: FARNEAR DELTA-LAMBDA-ET	MS: CROTEAU LESPERRON UNIX EX 96	MGS: VAL-BISSON DOORMAN EX 90
DAM: LADYROSE CAUGHT YOUR EYE-ET EX 95	MD: ROSEDALE ACHIEVERS LEGACY-ET VG 89 2yr	MGD: ROSEDALE LEXINGTON-ET EX 95

PRE-ORDER

GENOMIC

FR9746 AOT HAMPSHIRE-ET

PED

DOB
17/11/2020

HERD BOOK NUMBER
HOL840M003220248848

HO 100% | Beta Casein A2/A2 | aAa 426315



MGD: Cookiecutter Dta Habitan-ET



SCAN ME FOR MOST RECENT PROOF



EBI SEPT. 24 SOURCE ICBF REL

EBI **123** 59%

Prod. SI	99	75%
Fert. SI	34	47%
Carbon SI	-26	56%
Calv. SI	49	61%
Beef SI	-26	39%
Maint. SI	-14	35%
Mgmt. SI	-6	59%
Health SI	14	73%

LINEAR EVALUATION - INTERBULL 2024

STATURE	1.82				
CHEST WIDTH	-0.46				
BODY DEPTH	0.97				
ANGULARITY	1.44				
RUMP ANGLE	0.06				
RUMP WIDTH	1.17				
REAR LEG SET	-1.02				
LOCOMOTION	3.97				
FOOT ANGLE	1.6				
FORE UDDER	4.35				
REAR UDDER	4.95				
UDDER SUPPORT	3.74				
UDDER DEPTH	3.35				
TEAT PLACEMENT	2.32				
TEAT LENGTH	-0.35				
BCS	-0.51				
OVERALL TYPE	3.86				
OVERALL UDDER	3.66				
OVERALL F&L	2.85				

USA AUG 24			
TPI 2876			
PRODUCTION			
Milk Lbs	841	Daus	0
Fat Lbs	85	Fat %	0.2
Protein Lbs	50	Protein %	0.09
OTHER TRAITS			
DPR	-2		
Productive Life	2.1		
SCC	2.96		
TYPE			
PTAT	2.95		
Udder Composite	2.88		
Feet & Legs Composite	1.81		
BCS	1.17		

PRODUCTION

Milk Kg	Fat Kg	Protein Kg	Solid Kg	Fat %	Prot %
427	24	15	39	0.11	0.01

FERTILITY

Calving Interval	Survival
-0.2	2.6

CALVING DIFFICULTY

Records	Dairy Heifer Diff	Rel	Risk
0	5.14	61	Low

MANAGEMENT

Milk Speed	Temp
-30.9	-0.43

HEALTH

SCC	Mastitis	Lameness	TB	DTRS
-0.14	-0.08	-0.04	8.3	0

- Perfect Son
- Very Impressive Young Stock
- + 3.7 Udder and +3.9 Overall Type Score
- +12 feet and legs in Canada

SIRE: SIEMERS RENGD PERFECT-ET	MS: PROGENESIS POSITIVE	MGS: MR MOGUL DELTA 1427-ET
DAM: AOT POSITIVE HALLMARK-ET VG 85	MD: COOKIECUTTER DTA HABITAN-ET EX 90	MGD: COOKIECUTTER DAY HALEY-ET VG 88

BEEF FOR THE DAIRY HERD

SECURITY OF CALVING EASE



SHORT GESTATION



COMMERCIAL BEEF VALUE MAXIMISED €€€

COMMERCIAL BEEF VALUE (CBV)

Commercial Beef Value is an Index designed to aid beef farmers to establish the genetic potential of commercial animals from a beef finishing point of view and therefore the commercial value to them.

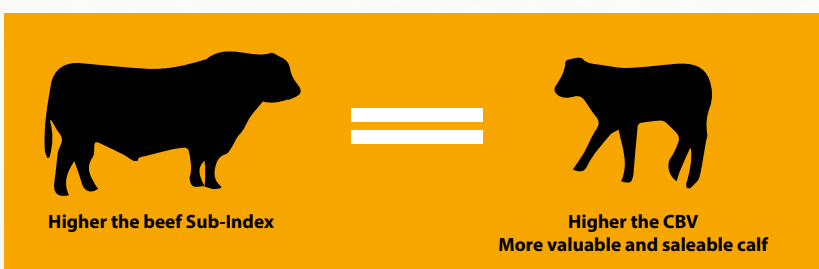
It includes: Carcass Weight, Carcass Conformation, Carcass Fat, Docility and Feed Intake. Progeny from the dairy herd with a high CBV will be more attractive to the calf/store buyer.

To maximise the CBV of your dairyX calves, use sires high in Beef Sub-Index.

HOW TO PRODUCE BEEF CALVES WITH MAXIMUM COMMERCIAL BEEF VALUE

Select appropriate sires for your Maidens, 2nd Calvers, Cows and Mature Cows as outlined below.

Then select sires with the highest Beef Sub-Index within your calving range.



PROVEN ANGUS SIRES FOR MAIDENS - SAFE CHOICE FOR CALVING EASE

Code	Name	DBI Index	Beef Sub Index	Dairy Heifer Calv. diff %	Dairy Heifer Calv. diff Rel	Ges-tation Length (days)	Expected Gestation Length (days)*	Carcass Weight (kgs)	Carcass Confor-mation (scale 1-15)	Age at finish (days)	Dairy Heifer Calving Recs	Carcass Recs	DBWS eligible **	Use On
AA4089	INTELAGRI MATTEO	€174	€104	6.5%	99%	-3.6	277	9.7	0.8	-19	8884	19686	Yes	Maiden Heifers
AA4631	GABRIEL PAT	€161	€101	7.6%	99%	-2.8	278	10.4	0.7	-23	6029	2618	Yes	Maiden Heifers
Angus National Breed Average		€126	€93	8.2%		-0.5	280	7.3	0.7	-15				



AA4089 INTELAGRI MATTEO

- Number 2 proven bull available for DBI (€174)
- A legend, proven easy calving option for dairy maiden heifers, only 6.5% based on over 8,800 records
- Top quality Angus for gestation length (-3.6 days) and age at finish (-19 days)



Sire AA4631 GABRIEL PAT

- Farmers favourite, over 12,300 records for calving ease only, 2.7% on dairy cows
- One of the best Angus available for gestation length (-2.8 days) and age at finish (-23 days)
- Number 1 proven AA available for age at finish (-23 days based on over 2,618 records)

SHORT GESTATION

HIGH BEEF VALUE

SHORT GESTATION

HIGH BEEF VALUE

*Expected gestation is the expected gestation of progeny when used on cows with an average index for gestation.

**Eligibility for the Dairy Beef Welfare Scheme for calves born in 2025

BEEF FOR THE DAIRY HERD

ANGUS SIRES FOR COWS

Code	Name	DBI Index	Beef Sub Index	Dairy Cow Calv. diff %	Dairy Cow Calv. Rel %	Gestation Length (days)	Expected Gestation Length (days)*	Carcass Weight (kgs)	Carcass Conformation (scale 1-15)	Age at finish (days)	Dairy Calving Recs	Carcass Recs	DBWS eligible **	Use On
AA7506	TOWER TOMMIE	€175	€116	3.0%	99%	-3.4	277	11.5	0.9	-21	5724	28	Yes	2nd Calvers
AA4088	INTELAGRI MAVERICK	€166	€107	2.9%	99%	-3.2	277	7.7	0.7	-15	30581	13886	Yes	2nd Calvers
AA2309	ST AODAIN L MASTER	€119	€104	3.8%	99%	0.0	280	13.2	0.8	-20	5792	4181	Yes	Cows
AA5280	COOLRAIN PATRIARCH	€143	€104	3.4%	99%	-1.8	278	8.3	0.7	-16	6581	1974	Yes	Cows
AA6682	HW LORD HORATIO	€150	€102	3.1%	99%	-2.4	278	12.2	1.0	-18	14411	725	Yes	Cows
AA8472	TUBRIDMORE TWOMEY	€161	€98	2.8%	99%	-3.5	277	10.4	0.5	-15	4566	2	Yes	2nd calvers
Test bulls														
AA9607	SHANAWAY VENGABUS	€185	€130	2.8%	61%	-2.7	278	18.7	0.7	-21	0	0	Yes	Proof Pending
AA9860	WESTELLEN BOSS Y929	€185	€128	2.7%	60%	-2.8	277	22.2	0.9	-17	0	0	Yes	Proof Pending
AA1428	DEELISH VANTASTIC	€152	€121	2.9%	62%	-0.2	280	14.9	0.9	-20	0	0	Yes	Test
AA1446	PUBBLESTOWN LORD JACK Y433	€152	€113	2.7%	63%	-0.8	280	12.2	0.8	-15	0	0	Yes	Proof Pending
AA1323	SWANKY VAGNER	€172	€109	2.5%	61%	-2.8	277	9.4	1.0	-22	0	0	Yes	Proof Pending
AA1284	THEGROVE VANDAME	€141	€109	3.1%	56%	-0.8	280	13.7	0.8	-14	1	0	Yes	Proof Pending
AA1320	SWANKY VALENTINO	€160	€108	2.3%	62%	-1.5	279	8.7	0.7	-21	0	0	Yes	Proof Pending
AA1317	SWANKY VAN GOGH	€168	€104	2.1%	62%	-2.5	278	9.2	0.6	-21	0	0	Yes	Proof Pending
AA9661	KNOCKMOUNTAGH VALENTINE	€151	€101	2.6%	58%	-2.5	278	13.3	0.8	-12	0	0	Yes	Proof Pending
AA1431	DEELISH WINGMAN	€144	€97	2.4%	60%	-1.6	279	12.3	0.8	-10	0	0	Yes	Proof Pending
Angus National Breed Average		€126	€93	2.8%		-0.5	280	7.3	0.7	-15				



AA6682 HW LORD HORATIO

- Farmers favourite, over 13,900 records for calving ease, only, 3.1% on dairy cows
- Angus trait leader for gestation length (-2.4 days) and conformation (1 units)
- Use to breed quality calves



AA1428 DEELISH VANTASTIC

- Exciting new bull, expected to be easy calving with good beef quality based on his pedigree



AA7506 TOWER TOMMIE

- Proven easy calving option for dairy cows, only 3% based on over 5,400 records
- Will breed quality looking calves with high CBV
- One of the best Angus available for gestation length (-3.4 days) and age at finish (-21 days)



AA1284 THEGROVE VANDAME

- Excited to await to see his first calves next Spring
- An exceptional, powerful, stylish, well-muscled bull expected to breed high quality calves without compromising on calving difficulty

BEEF FOR THE DAIRY HERD

HEREFORD

Code	Name	DBI Index	Beef Sub Index	Dairy Cow Calv. diff %	Dairy Cow Calv. Rel %	Gestation Length (days)	Expected Gestation Length (days)*	Carcass Weight (kgs)	Carcass Conformation (scale 1-15)	Age at finish (days)	Dairy Calving Recs	Carcass Recs	DBWS eligible **	Use On
HE9382	GOULDINGPOLL 1 NIJINSKY PP	€130	€109	4.0%	92%	-1.0	279	11.9	0.7	-18	415	0	Yes	Cows
HE8511	INTELAGRI 1 GOLD RUSH Pp	€120	€106	4.6%	98%	-1.6	279	10.9	0.7	-18	1490	0	Yes	Mature Only
HE4645	BARWISE 1 NOMAD Pp	€99	€94	4.4%	97%	0.3	281	8.6	0.6	-21	1075	870	Yes	Mature Only
HE6364	SOLPOLL 1 SONIC PP	€106	€92	3.9%	99%	0.2	281	5.6	0.6	-13	5435	669	Yes	Cows
HE5455	BARWISE 1 RICOCHET PP	€149	€92	2.9%	99%	-2.4	278	0.5	0.7	-19	4636	761	Yes	2nd Calvers
Test bulls														
HE9610	MIDFORD 1 WHIZZBANG PP	€118	€113	5.2%	57%	-1.5	279	12.4	0.6	-20	0	0	Yes	Proof Pending
HE9550	SOLPOLL 1 WATSON PP	€138	€112	4.1%	56%	-1.2	279	10.7	0.8	-23	2	0	Yes	Proof Pending
HE1141	APPEL 1 CHRISTOPHE PP	€108	€98	4.7%	61%	-1.5	279	3.7	0.8	-13	0	0	Yes	Proof Pending
HE1455	KEENAGH TITANIUM	€124	€89	3.1%	62%	-0.4	280	8.5	0.4	-20	0	0	Yes	Test
Hereford National Breed Average		€85	€86	4.2%			0.8	281	5.5	0.6	-16			



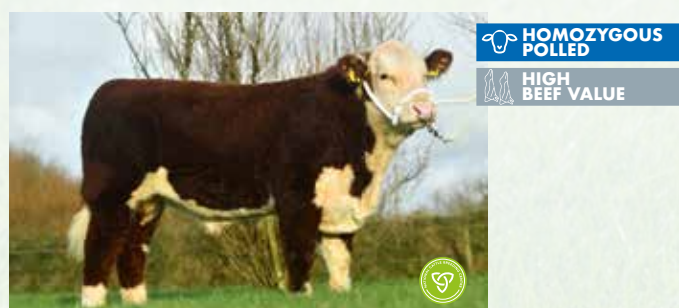
HE6364 SOLPOLL 1 SONIC PP

- Proven easy calving option for dairy cows, only 3.9% based on over 5,300 records
- Bull with a good DBI, with high a Beef SI
- Homozygous Polled sire, all his progeny will have no horns



HE9550 SOLPOLL 1 WATSON PP

- Excited to await for his first calves next Spring
- Hereford trait leader for gestation length (-1.2 days), conformation (0.8 units), age at finish (-23 days) and docility (0.2 units)
- Homozygous Polled sire, all his progeny will have no horns



HE9382 GOULDINGPOLL 1 NIJINSKY PP

- Will breed quality looking calves with high CBV
- Hereford trait leader for gestation length (-1 days), carcass weight (12 kg) and docility (0.2 units)
- Homozygous Polled sire, all his progeny will have no horns



HE1455 KEENAGH TITANIUM

- Exceptional looking bull, expected to breed top quality calves
- Horned Hereford

*Expected gestation is the expected gestation of progeny when used on cows with an average index for gestation.

**Eligibility for the Dairy Beef Welfare Scheme for calves born in 2025

BEEF FOR THE DAIRY HERD

BELGIAN BLUE

Code	Name	DBI Index	Beef Sub Index	Dairy Cow Calv. diff %	Dairy Cow Calv. Rel %	Gestation Length (days)	Expected Gestation Length (days)*	Carcass Weight (kgs)	Carcass Conformation (scale 1-15)	Age at finish (days)	Dairy Calving Recs	Carcass Recs	DBWS eligible **	Use On
BB9535	PERSIL DE PONCHAU	€149	€196	5.9%	79%	1.3	282	34.6	3.0	4	117	0	Yes	Mature Only
BB8496	STEF VD BLOMSTEEG	€140	€169	6.0%	96%	-1.1	279	28.4	2.5	5	794	0	Yes	Mature Only
BB7272	BBG Hybride	€104	€169	6.6%	94%	1.4	282	22.6	2.9	7	480	59	Yes	Mature Only
BB9373	ENLEVE DU BOIS DESNEUX	€147	€160	5.6%	88%	-1.4	279	22.9	2.6	5	222	0	Yes	Mature Only
BB7221	QUARRY BANK MONEYMAN	€175	€147	4.0%	98%	-2.2	278	18.9	2.4	5	1855	176	Yes	Cows
BB9460	BBG ELK 2341 DE BOULOGNE	€145	€133	4.5%	77%	-1.0	279	17.0	2.2	6	103	0	Yes	Mature Only
Test bulls														
BB1215	DONVIL VAN HET LINDEVELD	€85	€186	8.1%	45%	1.0	281	33.1	3.0	11	0	0	Yes	Proof Pending
BB1212	CORRANDULLA QUINNY ET	€10	€177	9.8%	50%	0.3	281	29.5	2.6	6	0	0	No	Test
BB1147	ENJEU DU BOIS DERNEUX	€134	€174	6.8%	59%	-1.7	279	27.4	2.5	2	0	0	Yes	Proof Pending
BB9847	BBG ICARE DE BOULOGNE	€42	€172	9.0%	44%	0.3	281	28.2	2.5	5	0	0	No	Proof Pending
BB9942	VILLABLUES QUARTY ET	€80	€164	7.6%	59%	0.0	280	26.8	2.7	12	0	0	Yes	Proof Pending
BB1425	IOMA QUIRKY ET	€119	€154	6.4%	47%	-0.8	280	24.1	2.2	7	0	0	Yes	Test
BB1437	IOMA QUENTIN	€123	€149	6.1%	47%	-1.7	279	23.3	2.2	11	0	0	Yes	Test
Belgian Blue National Breed Average		€75	€196	8.6%		0.9	281	35.6	2.8	4				



BB9535 PERSIL DE PONCHAU

- Exceptional bull with a very high beef SI and will produce high CBV calves
- BB trait leader for calving difficulty on dairy cows (5.9 %) and docility (0.3 units)



BB7272 BBG HYBRIDE

- Boost up the CBV of your calf crop
- BB trait leader for calving difficulty on dairy cows (6.6 %)



BB1147 ENJEU DU BOIS DERNEUX

- Ideal bull to use to increase the value of your calves
- Top 1% of Blues for gestation length (-1.4 days) and calving difficulty on dairy cows (5.6 %)



BB9460 BBG ELK 2341 DE BOULOGNE

- He has a very high DBI
- One of the best Blues available for gestation length (-1 days) and calving difficulty on dairy cows (4.5 %)

BEEF FOR THE DAIRY HERD

LIMOUSIN

Code	Name	DBI Index	Beef Sub Index	Dairy Cow Calv. diff %	Dairy Cow Calv. Rel %	Ges-tation Length (days)	Expected Gestation Length (days)*	Carcass Weight (kgs)	Carcass Confor-mation (scale 1-15)	Age at finish (days)	Dairy Calving Recs	Carcass Recs	DBWS eligible **	Use On
LM7416	POWERFUL PROPER	€156	€165	3.7%	97%	2.0	282	24.4	2.3	0	1226	197	Yes	Cows
LM4217	MOONDHARRIG KNELL	€107	€149	4.9%	99%	2.9	283	20.5	2.0	6	5030	16741	Yes	Mature Only
Test bulls														
LM9379	SHANNON STAN	€158	€194	5.2%	53%	1.6	282	33.6	2.5	-1	3	0	Yes	Proof Pending
LM9376	KELTIC SUPERFURRY Pp	€140	€174	5.1%	47%	1.6	282	31.0	2.1	3	1	0	Yes	Proof Pending
LM9869	SHANNON SAMURAI	€152	€168	4.5%	58%	1.6	282	24.0	2.3	6	0	0	Yes	Test
Limousin National Breed Average		€109	€163	5.1%		3.7	284	24.0	2.2	1				

AUBRAC

AU4683	TURLOUGHMORE MAGNIFICENT	€174	€161	3.6%	99%	0.6	281	19.7	1.8	-7	5727	3381	Yes	Cows
AU6685	MOUNTCAIN ONDEE	€140	€120	3.7%	97%	-1.0	279	10.0	1.6	2	812	424	Yes	Cows
Test bulls														
AU1515	BALLYCLOUGH THEO Pp	€158	€151	3.3%	43%	1.5	282	16.1	1.9	-13	0	0	Yes	Test
Aubrac National Breed Average		€151	€141	3.5%		1.0	281	16.0	1.8	-4				

CHAROLAIS

CH4321	LAPON	€138	€193	5.5%	99%	2.1	282	42.6	2.3	2	3428	8743	Yes	Mature Only
CH6490	ORBI	€138	€166	4.4%	93%	2.4	283	33.5	2.0	-1	410	493	Yes	Mature Only
Charolais National Breed Average		€90	€175	6.5%		2.7	283	35.0	1.9	-3				

SIMMENTAL

SI4250	LIS-NA-RI GUCCI	€69	€121	5.7%	97%	2.3	283	19.4	1.6	-5	879	1363	Yes	Mature Only
SI7491	LEEHERD LYNX 364	€27	€120	7.0%	88%	3.4	284	19.2	1.6	-4	225	64	Yes	Mature Only
SI2469	LISNACRANN FIFTY CENT	€64	€93	5.5%	99%	0.5	281	14.0	1.0	-2	3180	7524	No	Mature Only
Simmental National Breed Average		€60	€120	6.1%		2.3	283	20.2	1.3	-5				

Salers, Speckle Park and Wagyu for cows

SA4604	KNOTTOWN ROY	€143	€120	3.0%	96%	0.2	280	20.0	1.0	4	787	2194	Yes	2nd Calvers
WA2409	EDENBANE GLENSLA FUJISAWA	€61	€18	2.0%	94%	-0.1	280	-13.0	0.0	7	549	131	No	2nd Calvers
Test bulls														
SP1521	SCOLLOP KRACKERJACK ET	€99	€54	2.4%	49%	-0.4	280	-7.1	0.6	-12	0	0	No	Test



AU1515 BALLYCLOUGH THEO P

- Exceptional looking Aubrac
- Expected to breed top quality calves without compromising on calving difficulty

LM7416 POWERFUL PROPER

- Proven easy calving option for dairy cows, only 3.7% based on over 1,200 records
- Boost up the CBV of your calf crop
- Limousin trait leader for gestation length (2 days) and calving difficulty on dairy cows (3.7%)

CH6490 ORBI

- One of the best Charolais available on DBI (€138)
- Charolais trait leader for calving difficulty on dairy cows (4.4%)

*Expected gestation is the expected gestation of progeny when used on cows with an average index for gestation.

**Eligibility for the Dairy Beef Welfare Scheme for calves born in 2025

Very High Satisfaction With Munster Bovine Customers

Triple Mix - 3 Sires in 1 Straw Better Opportunity Of Getting Your Cows In Calf!

HEM137 Triple Mix Offering HE

Code	Name	DBI Index	Beef Sub Index	Dairy Cow Calv. diff %	Dairy Cow Calv. Rel %	Ges-tation Length (days)	Expected Gestation Length (days)*	Carcass Weight (kgs)	Carcass Confor-mation (scale 1-15)	Age at finish (days)	Dairy Calving Recs	Carcass Recs	DBWS eligible **
HE6841	GOULDINGPOLL 1 ZORO PP	€132	€108	3.1%	99%	0.7	281	8.8	0.87	-22.24	12159	533	Yes
HE6364	SOLPOLL 1 SONIC PP	€106	€92	3.9%	99%	0.2	281	5.6	0.56	-12.78	5435	669	Yes
HE5346	FISHER 1 PROFILE PP	€145	€108	3.6%	99%	-2.1	278	2.5	0.77	-13.9	14435	4680	Yes

HOMOZYGOUS
POLLED



HOMOZYGOUS
POLLED



HOMOZYGOUS
POLLED



HE6841 GOULDINGPOLL 1 ZORO PP

- Will breed quality looking calves with high CBV
- Hereford trait leader for calving difficulty on dairy cows (3.1%), conformation (0.9 units), age at finish (-23 days) and docility (0.2 units)
- Homozygous Polled sire, all his progeny will have no horns

HE6364 SOLPOLL 1 SONIC PP

- Easy calving Hereford
- Homozygous Polled sire, all his progeny will have no horns

HE5346 FISHER 1 PROFILE PP

- One of the best HE available on DBI (€145)
- Exceptional Hereford for gestation length (-2.1 days) and conformation (0.8 units)
- Homozygous Polled sire, all his progeny will have no horns

AAM173 Triple Mix Offering AA

Code	Name	DBI Index	Beef Sub Index	Dairy Cow Calv. diff %	Dairy Cow Calv. Rel %	Ges-tation Length (days)	Expected Gestation Length (days)*	Carcass Weight (kgs)	Carcass Confor-mation (scale 1-15)	Age at finish (days)	Dairy Calving Recs	Carcass Recs	DBWS eligible **
AA9607	SHANAWAY VENGABUS	€185	€130	2.8%	61%	-2.7	278	18.7	0.71	-20.62	0	0	Yes
AA9860	WESTELLEN BOSS Y929	€185	€128	2.7%	60%	-2.8	277	22.2	0.89	-16.73	0	0	Yes
AA9661	KNOCKMOUNTAGH VALENTINE	€151	€101	2.6%	58%	-2.5	278	13.3	0.77	-12.37	0	0	Yes



AA9607 SHANAWAY VENGABUS

- Exceptionally high DBI sire
- Angus trait leader for gestation length (-2.7 days), carcass weight (19 kg) and age at finish (-21 days)

AA9860 WESTELLEN BOSS Y929

- Will breed quality looking calves with high CBV
- One of the best Angus sires available for gestation length (-2.9 days), carcass weight (22 kg)

AA9661 KNOCKMOUNTAGH VALENTINE

- High DBI, balanced for both calving and beef
- Angus trait leader for gestation length (-2.3 days)

DIY TRAINING COURSE

Would you like to AI your own cows?
We offer Ireland's most comprehensive
DIY AI course
with unrivalled theory
and practical training.
DAFM APPROVED
5 DAY COURSE.



Contact us for more information
and details of special offers on

022 43228



Heat Detection Aids



CHINBALL HARNESS
(for vasectomised bull)

€180



5L PAINT
FOR
HARNESS

€80



ESTROTECT HEAT ALERT
TAGS - SELF ADHESIVE
(50 Pack)

€80



GLUE

€30

ROLL OF 100
E-ALERT PATCHES

€60



TAILPAINTER
DAISY PAINT
WITH BRUSH

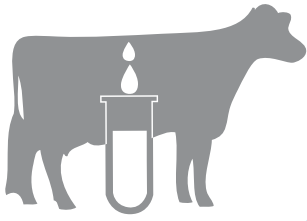
€18

- 750ml bottle
- Water based tail paint
- Available in blue, orange, green and red



PAINTSTICKS
(12 per box)

€40



START MILK RECORDING THIS AUTUMN

& identify under performing / high scc cows in your herd



Using the Munster Bovine Milk Recording & Lifetime Summary report will ensure herd owners can make quick, effortless and profitable decisions for their farm business.

Milk Recorded Lifetime information for the cow is available AFTER EACH TEST. Cows are ranked within a herd based on milk recorded lifetime.

- Cows are ranked for you allowing for effective decision making to select the Dams of your replacement heifers and to identify the non-performers in your herd.
- Report allows you to identify the reasons for the difference in performance, profitability & ranking.
- Each milk recording allows you to monitor each cow for SCC individually, building an SCC history and enabling you to make decisions on milking routine, treatment, culling etc.
- Identify under performing cows in the current lactation - Mastitis / Energy / Lameness / Disease?

- TIME TO GET STARTED -

**1 recording this Autumn
+ 4 Recordings 2025
...NO CHARGE FOR FIVE
RECORDINGS UNTIL 2025**

**AUTUMN
PROMOTION
2024**

**EDIY Milk Recording Customers
- Get a trainer **FREE OF CHARGE** for the
first recording to help you get started.**

HOW TO SIGN UP: In order to complete an Autumn milk recording milk, suppliers must complete and return the Munster Bovine Customer form by placing a tick on their desired choice of testing programme.

Promotion Sign Up Closing Date : Oct 31st 2024

Contact your local Milk Advisor or Munster Bovine, Ballyvorisheen, Mallow, Co. Cork on (022) 43228.



SAFETY FOCUS –

Protect the AI technician, the animal and yourself.

It is the responsibility of all herd owners to make every effort to ensure that anyone working with animals on their farm leaves injury free, having successfully completed their job in a safe and stress-free manner. Our team of 160 AI technicians work long hours under time pressure during the peak mating season. They are at risk of serious injury from kicks and crushing when working in a vulnerable position behind the cow or heifer.

Prevent animals causing injury

- Known dangerous animals should always be marked for culling and never presented for insemination.
- Bulling animals are a danger to themselves and the people around them – keep all children and inexperienced animal handlers out of harm's way.
- Never isolate bulling animals – leave them in pairs or small groups for company.



Example – self-locking head gate



Example – Vet gate

**Protect
your AI
technician,
yourself,
and the
animals**

Safe facilities to avoid injury

- Stop cows backing on the AI technician – Restrain cows with a functional head gate or backing bar.
- Prevent cows crushing the AI technician – always use a properly closing back gate or a vet gate at the front of the crush.
- The crush must be strong enough and the floor clean to prevent cows falling and slipping.
- In slippy collecting yards and crushes, a scatter of sand on the concrete will provide immediate grip. Do it daily during the AI season.
- Make sure that there is an escape route from the collecting yard so anyone can get away from an aggressive animal.
- Before the breeding season starts, make sure the crush is fit for purpose, moving parts greased, and broken metal repaired with no sharp projections. The floor should be non-slip and clean.
- Batch crushes are always preferred when high numbers are being inseminated.
- Your AI Technician and your vet can advise you on any required changes to your crush design to make it safer.



Example – anti backing bar

Good facilities, good job

OUR TEAM



Tom Baker
Commercial Manager
087 3832001

West Cork



Declan Keating
Farm Relationship Manager
086 8164024



David Buckley
Breeding Advisor
086 3962114

North Cork



Joe O'Flynn
Farm Relationship Manager
086 4030646



Jack Walsh
Breeding Advisor
087 1030356



Patrick Moloney
Breeding Advisor
083 0049402

South Cork



Anthony Buckley
Farm Relationship Manager
087 4946052



Tom Tobin
Breeding Advisor
087 2758061



Brian Hayes
Breeding Advisor
087 6957999

Limerick



John Ryan
Farm Relationship Manager
086 8352700



Jack Walsh
Breeding Advisor
087 1030356

Clare Galway



John Meehan
Farm Relationship Manager
086 6054723



Donal Coppinger
Breeding Advisor
087 3159166

Kerry



James Egan
Farm Relationship Manager
086 3650665



Jack Walsh
Breeding Advisor
087 1030356

East Cork /West Waterford



Billy Fitzgerald
Farm Relationship Manager
086 4126727



Patrick Moloney
Breeding Advisor
083 0049402



David Mc Grath
Breeding Advisor
087 2241573

Tipperary / Mitchelstown



Graham Swanton
Farm Relationship Manager
087 7420965



Ben Slee
Breeding Advisor
087 2902031



Stephen Shannon
Production & Type Specialist
087 1152381

**DEDICATED TEXT NUMBER FOR BOOKING AI TECHNICIAN CALL SERVICE.
SIMPLY TEXT BTE NO. TO 086 387 6259 BEFORE 12 NOON MON-FRI & BEFORE
10AM SAT, SUN AND BANK HOLIDAYS FOR SAME DAY SERVICE.**