



MUNSTER BOVINE

Collectively Improving Farm Life



**Beef Sires for Dairy Herd
May 2024**

New to Munster Bovine Customers for Breeding Season 24:

Triple Mix - 3 Sires in 1 Straw

Better Opportunity of getting your cows in calf!

AAM134 Triple Mix Offering AA – USE ON COWS

Code	Name	Breed	Beef Sub Index	Beef Sub Index Stars Within Breed	Dairy Cow Calv. diff %	Dairy Cow Calv. Rel %	Gestation Length (days)	Expected Gestation Length (days)*	DBI Index	Carcass Weight (kgs)	Carcass Conformation (scale 1-15)	Age at finish (days)
AA8472	TUBRIDMORE TWOMEY	AA	€84	2	2.2%	89%	-3	277	€149	7.9	0.35	-14.16
AA7506	TOWER TOMMIE	AA	€104	5	3.2%	97%	-3.4	277	€162	6.8	0.9	-19.95
AA4631	GABRIEL PAT	AA	€96	4	2.7%	99%	-2.8	278	€156	9.7	0.62	-20.96

AA8472 TUBRIDMORE TWOMEY



- Very easy calving and suitable for 2nd calvers.
- Short gestation

AA7506 TOWER TOMMIE



- Exceptionally short gestation sire, good option for late in the breeding season.
- Proven easy calving on dairy cows and producing high quality calves.

AA4631 GABRIEL PAT



- Proven easy calving sire.
- Pat will produce calves with a high CBV.

HEM137 Triple Mix Offering HE – USE ON COWS

Code	Name	Breed	Beef Sub Index	Beef Sub Index Stars Within Breed	Dairy Cow Calv. diff %	Dairy Cow Calv. Rel %	Gestation Length (days)	Expected Gestation Length (days)*	DBI Index	Carcass Weight (kgs)	Carcass Conformation (scale 1-15)	Age at finish (days)
HE6841	GOULDINGPOLL 1 ZORO PP	HE	€105	5	3.0%	99%	0.5	281	€134	8.1	0.83	-22.52
HE6364	SOLPOLL 1 SONIC PP	HE	€91	4	3.9%	99%	-0.3	280	€107	5	0.57	-11.31
HE5346	FISHER 1 PROFILE PP	HE	€113	5	3.6%	99%	-2.2	278	€149	3.8	0.78	-15.08

HE6841 GOULDINGPOLL 1 ZORO PP



- Zoro has that dream combination of calving ease and high performance.
- Homozygous polled, all progeny will be polled.

HE6364 SOLPOLL 1 SONIC PP



- Well balanced bull for calving ease and carcass traits
- Homozogous polled, all progeny will be polled.

HE5346 FISHER 1 PROFILE PP



- No. 1 proven HE available on DBI
- Profile is the ultimate HE sire; calving easy, short gestation, super quality & colour
- Homozygous polled, all progeny will be polled.



AA4089 Intelagri Matteo ET



Sire Overview

Finishing

Replacement

Easy Calving

Show Stoppers

D.O.B	03-JUN-15
Breed	AA 100%
Bred By	Robert Beattie, Manor Kilbride, Co. Wicklow
Myostatin Status	+/+ (Non-Carrier)
Price	€14.00 Conventional

Download PDF

Add to Shortlist

Economic indexes

Star Rating (within breed)	Economic Index	€ Value per progeny	Index Reliability	Star Rating (across all beef breeds)
★★★★★	Dairy Beef Index (DBI)	€172	95% (V High)	★★★★★
★★★★☆	Beef Sub Index	€102	93% (V High)	★★★★☆
★★★★★	Calving Sub Index	€60	99% (V High)	★★★★★

Calving Difficulty Total Dairy Calving Records: 26020

When Mated With	%	Reliability
Dairy Heifers Breed Avg: 8.4% All Breeds Avg: 12.5%	6.54%	99% (V High)
Dairy Cows Breed Avg: 2.8% All Breeds Avg: 4.9%	2.48%	99% (V High)

Expected Progeny Performance Carcass Records: 0

Star Rating (within breed)	Key Profit Traits	Index Value	Trait Reliability	Star Rating (across all beef breeds)
★★★★★	Gestation Length (Days)	-3.6	99% (V High)	★★★★★
	Expected Gestation Length (Days)	277		
★★★★☆	Carcass Weight (Kg)	9.7 Kg	99% (V High)	★★★★☆
★★★★☆	Carcass Conformation (1-5 Scale)	0.8 scale	99% (V High)	★★★★☆
★★★★☆	Feed Intake	0.21d	76%	★★★★☆
★★★★☆	% Meeting Factory Specification	-26.86 scale		★★★★☆
★★★★★	Age at Slaughter	-18.22d	99%	★★★★★

Ancestry





Sire



Sire Overview

Easy Calving	Sexed
D.O.B	05-JAN-17
Breed	AA 100%
Bred By	Robert Shannon, Co. Cork
Price	€14.00 Conventional €44.00 Male Sexed
<p>Download PDF Add to Shortlist</p>	

Economic indexes

Star Rating (within breed)	Economic Index	€ Value per progeny	Index Reliability	Star Rating (across all beef breeds)
★★★★★	Dairy Beef Index (DBI)	€156	91% (V High)	★★★★★
★★★★☆	Beef Sub Index	€96	86% (V High)	★★★★☆
★★★★★	Calving Sub Index	€50	99% (V High)	★★★★★

Calving Difficulty Total Dairy Calving Records: 8889

When Mated With	%	Reliability
Dairy Heifers Breed Avg: 8.4% All Breeds Avg: 12.5%	7.53%	99% (V High)
Dairy Cows Breed Avg: 2.8% All Breeds Avg: 4.9%	2.67%	99% (V High)

Expected Progeny Performance Carcass Records: 0

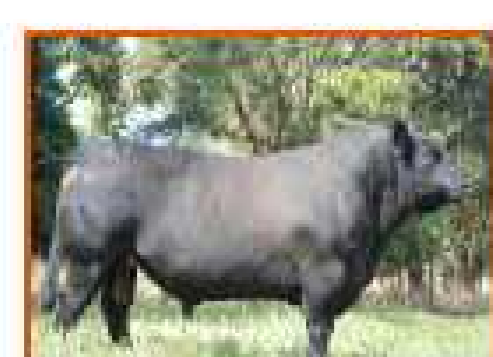
Star Rating (within breed)	Key Profit Traits	Index Value	Trait Reliability	Star Rating (across all beef breeds)
★★★★★	Gestation Length (Days)	-2.81	99% (V High)	★★★★★
	Expected Gestation Length (Days)	277		
★★★★☆	Carcass Weight (Kg)	9.7 Kg	99% (V High)	★★★★☆
★★★★☆	Carcass Conformation (1-5 Scale)	0.62 scale	99% (V High)	★★★★☆
★★★★☆	Feed Intake	0.29d	49%	★★★★☆
★★★★☆	% Meeting Factory Specification	-29.44 scale		★★★★☆
★★★★★	Age at Slaughter	-20.96d	98%	★★★★★

Ancestry





TE MANIA BERKLEY BI, Sire



Sire Overview

Easy Calving

D.O.B 20-MAR-17

Breed AA 100%

Bred By Des O' Connor, Tarbert, Co. Kerry

Price €14.00 Conventional

Download PDF Add to Shortlist

Economic indexes

Star Rating (within breed)	Economic Index	€ Value per progeny	Index Reliability	Star Rating (across all beef breeds)
★★★★★	Dairy Beef Index (DBI)	€145	91% (V High)	★★★★★
★★★☆☆	Beef Sub Index	€86	86% (V High)	★★★☆☆
★★★★★	Calving Sub Index	€50	98% (V High)	★★★★★

Calving Difficulty Total Dairy Calving Records: 1549

When Mated With	%	Reliability
Dairy Heifers Breed Avg: 8.4% All Breeds Avg: 12.5%	7.74%	96% (V High)
Dairy Cows Breed Avg: 2.8% All Breeds Avg: 4.9%	2.51%	98% (V High)

Expected Progeny Performance Carcass Records: 0

Star Rating (within breed)	Key Profit Traits	Index Value	Trait Reliability	Star Rating (across all beef breeds)
★★★★★	Gestation Length (Days)	-2.65	99% (V High)	★★★★★
	Expected Gestation Length (Days)	278		
★★★☆☆	Carcass Weight (Kg)	2.2 Kg	99% (V High)	★★★☆☆
★★★☆☆	Carcass Conformation (1-5 Scale)	0.69 scale	99% (V High)	★★★☆☆
★★★★★	Feed Intake	0.04d	50%	★★★☆☆
★★★☆☆	% Meeting Factory Specification	-29.2 scale		★★★☆☆
★★★☆☆	Age at Slaughter	-15.16d	97%	★★★★★

Ancestry





SHANAWAY VENGABUS



Sire Overview

Young Test Bull

D.O.B 10-MAR-22

Breed AA 100%

Bred By Stephen Carmody Vs, Tarbert, Co. Kerry

Myostatin Status +/- (Non-Carrier)

Price €10.00 Conventional

Download PDF Add to Shortlist

Economic indexes

Star Rating (within breed)	Economic Index	€ Value per progeny	Index Reliability	Star Rating (across all beef breeds)
★★★★★	Dairy Beef Index (DBI)	€184	49% (Average)	★★★★★
★★★★★	Beef Sub Index	€134	46% (Average)	★★★★☆
★★★★★	Calving Sub Index	€43	53% (Average)	★★★★★

Calving Difficulty Total Dairy Calving Records: 0

When Mated With	%	Reliability
Dairy Heifers Breed Avg: 8.4% All Breeds Avg: 12.5%	8.06%	58% (Average)
Dairy Cows Breed Avg: 2.8% All Breeds Avg: 4.9%	2.76%	59% (Average)

Expected Progeny Performance Carcass Records: 0

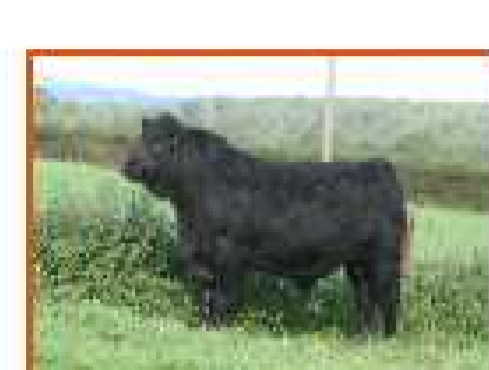
Star Rating (within breed)	Key Profit Traits	Index Value	Trait Reliability	Star Rating (across all beef breeds)
★★★★★	Gestation Length (Days)	-2.3	46% (Average)	★★★★★
	Expected Gestation Length (Days)	278		
★★★★★	Carcass Weight (Kg)	20.1 Kg	47% (Average)	★★★★☆
★★★★☆	Carcass Conformation (1-5 Scale)	0.76 scale	45% (Average)	★★★★☆
★★★★☆	Feed Intake	0.26d	38%	★★★★☆
★★★★★	% Meeting Factory Specification	-24.46 scale		★★★★☆
★★★★★	Age at Slaughter	-20.12d	66%	★★★★★

Ancestry





WESTELLEN BOSS Y929



Sire Overview

Young Test Bull

D.O.B 16-SEP-22

Breed AA 100%

Bred By John Tait

Myostatin Status +/- (Non-Carrier)

Price €10.00 Conventional

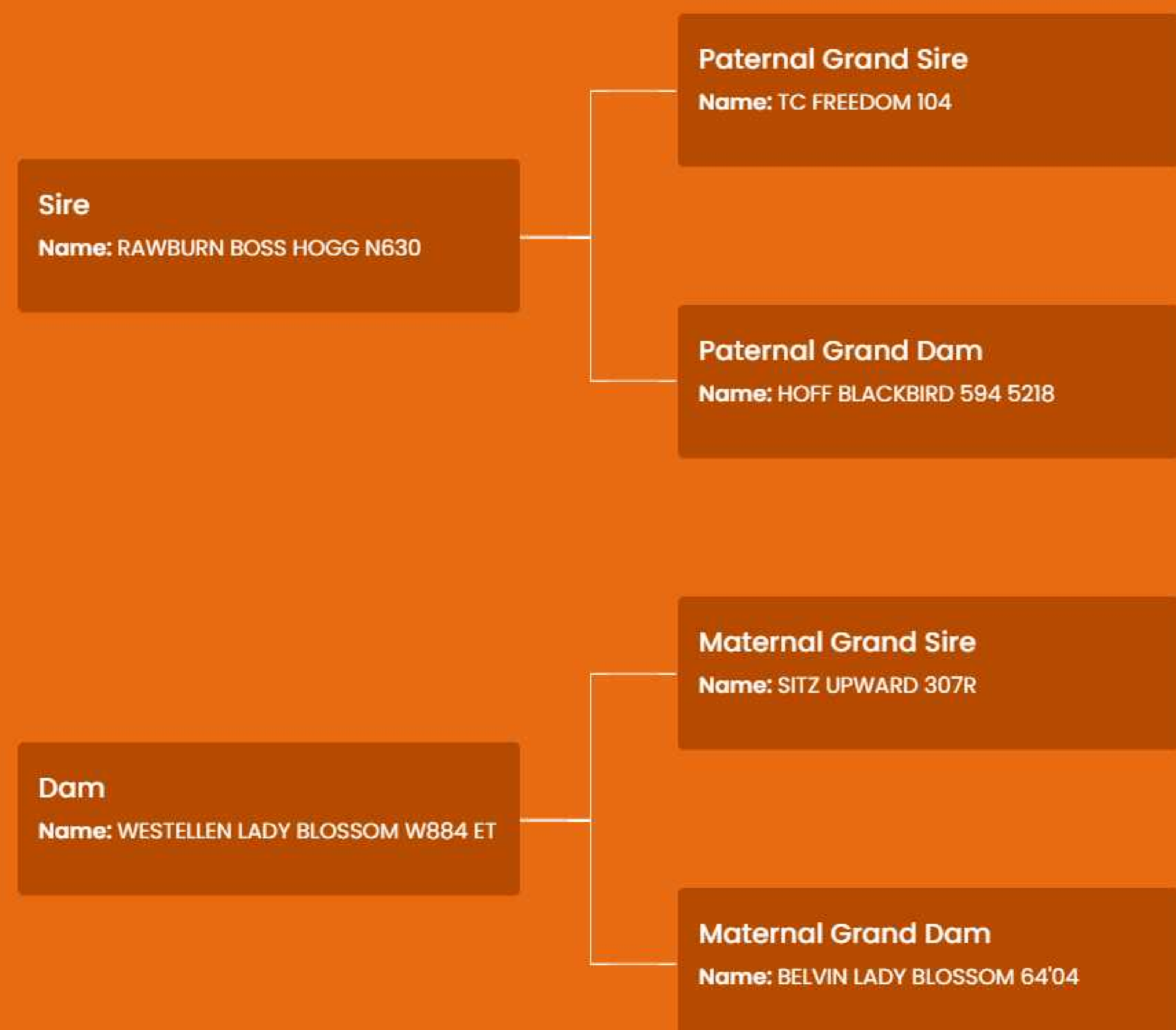
Download PDF Add to Shortlist

Economic indexes				
Star Rating (within breed)	Economic Index	€ Value per progeny	Index Reliability	Star Rating (across all beef breeds)
★★★★★	Dairy Beef Index (DBI)	€169	47% (Average)	★★★★★
★★★★★	Beef Sub Index	€120	45% (Average)	★★★☆☆
★★★★★	Calving Sub Index	€45	51% (Average)	★★★★★

Calving Difficulty			Total Dairy Calving Records: 0
When Mated With	%	Reliability	
Dairy Heifers Breed Avg: 8.4% All Breeds Avg: 12.5%	7.33%	53% (Average)	
Dairy Cows Breed Avg: 2.8% All Breeds Avg: 4.9%	2.78%	56% (Average)	

Expected Progeny Performance				Carcass Records: 0
Star Rating (within breed)	Key Profit Traits	Index Value	Trait Reliability	Star Rating (across all beef breeds)
★★★★★	Gestation Length (Days)	-2.19	45% (Average)	★★★★★
	Expected Gestation Length (Days)	278		
★★★★★	Carcass Weight (Kg)	20.8 Kg	45% (Average)	★★★★☆
★★★★★	Carcass Conformation (1-5 Scale)	0.86 scale	44% (Average)	★★★☆☆
★★★☆☆	Feed Intake	0.7d	36%	★★★☆☆
★★★★★	% Meeting Factory Specification	-25.02 scale		★★★☆☆
★★★★☆	Age at Slaughter	-15.99d	64%	★★★★★

Ancestry





Tower Tommie



Sire Overview

D.O.B	10-FEB-20
ID	20202111
Breed	AA 100%
Bred By	Gerry Lenehan, Easkey, Co. Sligo
Myostatin Status	+/+ (Non-Carrier)
Price	€14.00 Conventional

Download PDF

Add to Shortlist

Economic indexes				
Star Rating (within breed)	Economic Index	€ Value per progeny	Index Reliability	Star Rating (across all beef breeds)
★★★★★	Dairy Beef Index (DBI)	€162	71% (High)	★★★★★
★★★★★	Beef Sub Index	€104	57% (Average)	★★★☆☆
★★★★★	Calving Sub Index	€47	97% (V High)	★★★★★

Calving Difficulty			Total Dairy Calving Records: 816
When Mated With	%	Reliability	
Dairy Heifers Breed Avg: 8.4% All Breeds Avg: 12.5%	8.39%	90% (V High)	
Dairy Cows Breed Avg: 2.8% All Breeds Avg: 4.9%	3.15%	97% (V High)	

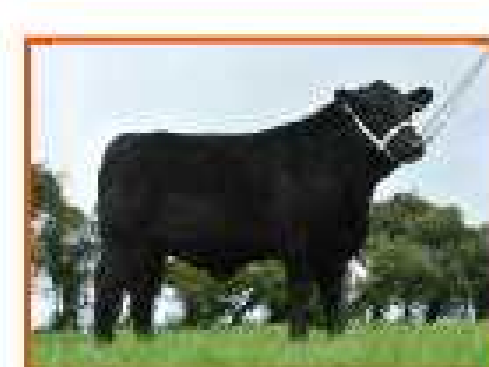
Expected Progeny Performance				Carcass Records: 0
Star Rating (within breed)	Key Profit Traits	Index Value	Trait Reliability	Star Rating (across all beef breeds)
★★★★★	Gestation Length (Days)	-3.36	99% (V High)	★★★★★
	Expected Gestation Length (Days)	277		
★★★☆☆	Carcass Weight (Kg)	6.8 Kg	63% (High)	★★★☆☆
★★★★★	Carcass Conformation (1-5 Scale)	0.9 scale	54% (Average)	★★★☆☆
★★★★☆	Feed Intake	0.17d	42%	★★★☆☆
★★★★☆	% Meeting Factory Specification	-25.84 scale		★★★☆☆
★★★★★	Age at Slaughter	-19.95d	67%	★★★★★

Ancestry





KNOCKMOUNTAGH VALENTINE



Sire Overview

Young Test Bull

D.O.B 16-JAN-22

Breed AA 100%

Bred By Eamon & John Mckiernan, Monasterboice, Co. Louth

Myostatin Status +/- (Non-Carrier)

Price €10.00 Conventional

Download PDF Add to Shortlist

Economic indexes

Star Rating (within breed)	Economic Index	€ Value per progeny	Index Reliability	Star Rating (across all beef breeds)
★★★★★	Dairy Beef Index (DBI)	€155	49% (Average)	★★★★★
★★★★☆	Beef Sub Index	€101	44% (Average)	★★★★☆
★★★★★	Calving Sub Index	€49	56% (Average)	★★★★★

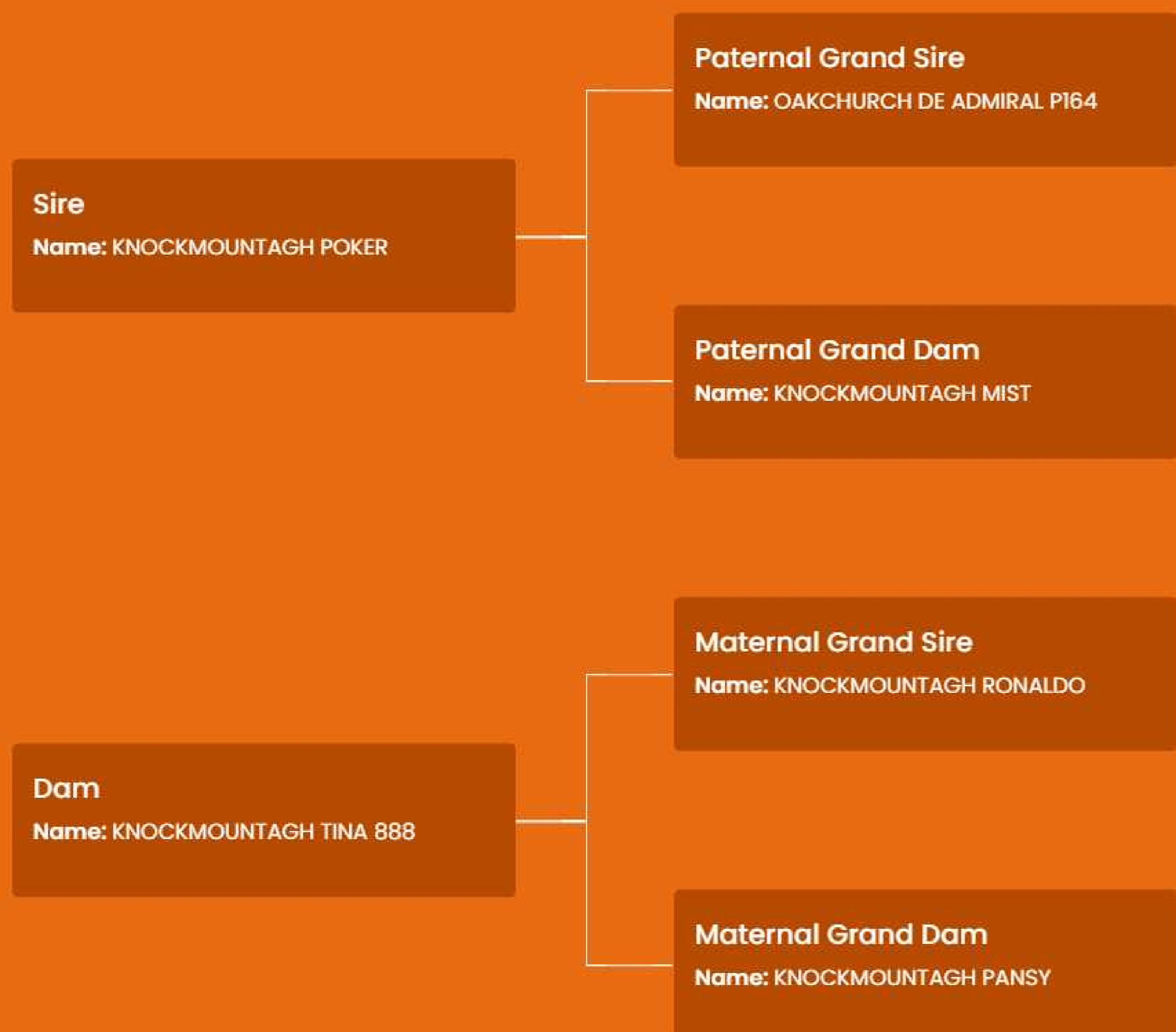
Calving Difficulty Total Dairy Calving Records: 0

When Mated With	%	Reliability
Dairy Heifers Breed Avg: 8.4% All Breeds Avg: 12.5%	7.85%	53% (Average)
Dairy Cows Breed Avg: 2.8% All Breeds Avg: 4.9%	2.42%	55% (Average)

Expected Progeny Performance Carcass Records: 0

Star Rating (within breed)	Key Profit Traits	Index Value	Trait Reliability	Star Rating (across all beef breeds)
★★★★★	Gestation Length (Days)	-2.52	59% (Average)	★★★★★
	Expected Gestation Length (Days)	278		
★★★★★	Carcass Weight (Kg)	13.1 Kg	45% (Average)	★★★★☆
★★★★☆	Carcass Conformation (1-5 Scale)	0.77 scale	44% (Average)	★★★★☆
★★★★☆	Feed Intake	0.39d	35%	★★★★☆
★★★★☆	% Meeting Factory Specification	-25.33 scale		★★★★☆
★★★★☆	Age at Slaughter	-12.75d	63%	★★★★★

Ancestry





Tubridmore Twomey



Sire Overview

Easy Calving

D.O.B 15-AUG-20

ID 20211985

Breed AA 100%

Bred By Denis Twomey, Causeway, Co Kerry

Myostatin Status +/- (Non-Carrier)

Price €14.00 Conventional

Download PDF Add to Shortlist

Economic indexes

Star Rating (within breed)	Economic Index	€ Value per progeny	Index Reliability	Star Rating (across all beef breeds)
★★★★★	Dairy Beef Index (DBI)	€149	64% (High)	★★★★★
★★★☆☆	Beef Sub Index	€84	50% (Average)	★★★☆☆
★★★★★	Calving Sub Index	€57	89% (V High)	★★★★★

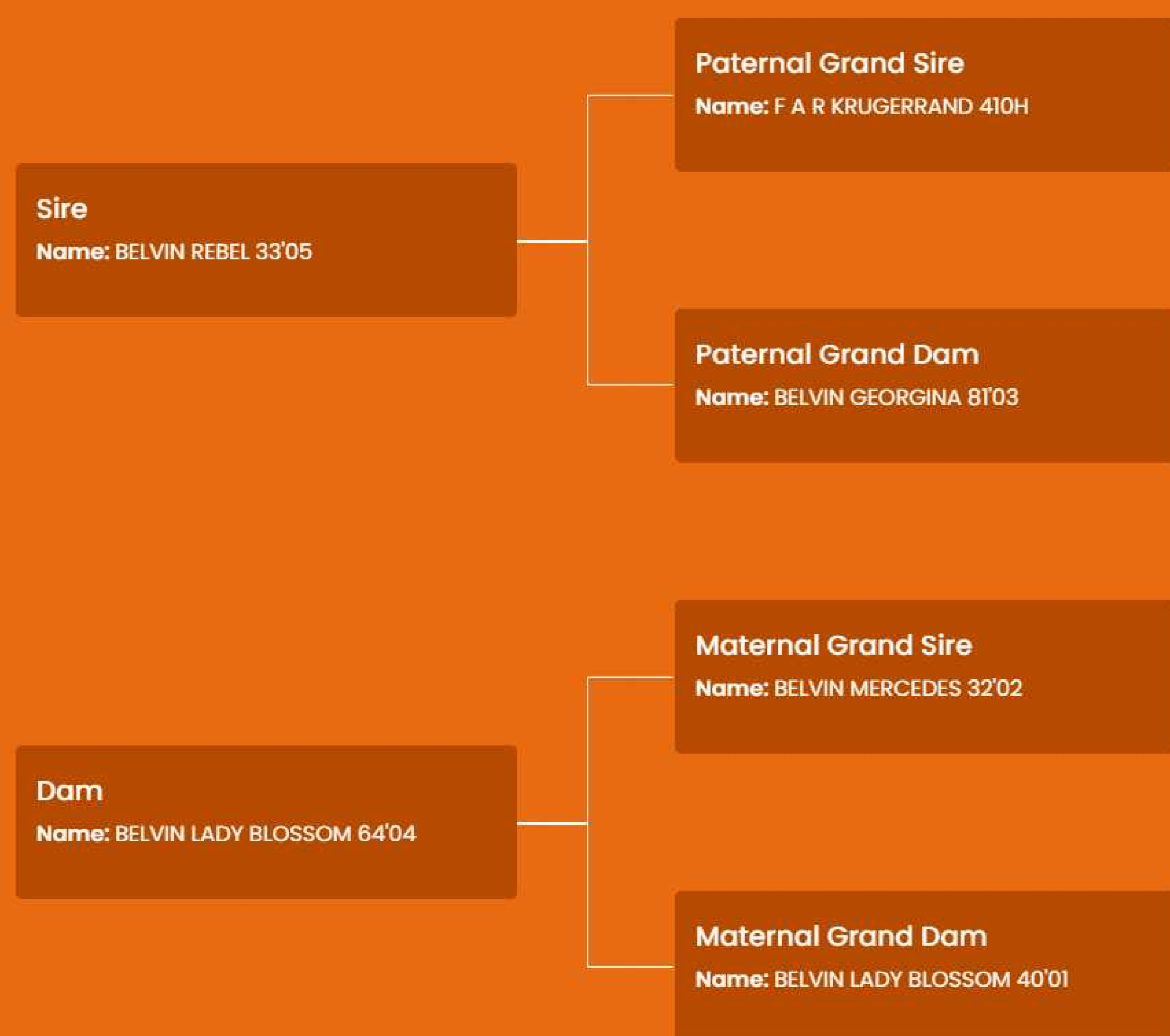
Calving Difficulty Total Dairy Calving Records: 269

When Mated With	%	Reliability
Dairy Heifers Breed Avg: 8.4% All Breeds Avg: 12.5%	5.92%	68% (High)
Dairy Cows Breed Avg: 2.8% All Breeds Avg: 4.9%	2.23%	89% (V High)

Expected Progeny Performance Carcass Records: 0

Star Rating (within breed)	Key Profit Traits	Index Value	Trait Reliability	Star Rating (across all beef breeds)
★★★★★	Gestation Length (Days)	-3.02	97% (V High)	★★★★★
	Expected Gestation Length (Days)	277		
★★★★☆	Carcass Weight (Kg)	7.9 Kg	54% (Average)	★★★★☆
★★★☆☆	Carcass Conformation (1-5 Scale)	0.35 scale	48% (Average)	★★★☆☆
★★★☆☆	Feed Intake	0.45d	37%	★★★☆☆
★★★☆☆	% Meeting Factory Specification	-31.91 scale		★★★☆☆
★★★★☆	Age at Slaughter	-14.16d	63%	★★★★☆

Ancestry



MALE SEXED

DAIRY BEEF BULL

CALVING EASE AVERAGE

FINISHING

WEANLING



Jerusalem Lady Heather



Sire Overview

Weanling
Finishing
Show Stoppers

Sexed

D.O.B 03-MAR-19

ID UK546977402538

Breed AA 100%

Bred By William McLaren, Scotland

Myostatin Status +/- (Non-Carrier)

Price €14.00 Conventional
€44.00 Male Sexed

Download PDF
Add to Shortlist

Economic indexes

Star Rating (within breed)	Economic Index	€ Value per progeny	Index Reliability	Star Rating (across all beef breeds)
★★★★★	Dairy Beef Index (DBI)	€149	92% (V High)	★★★★★
★★★★☆	Beef Sub Index	€100	88% (V High)	★★★★☆
★★★★★	Calving Sub Index	€42	98% (V High)	★★★★★

Calving Difficulty Total Dairy Calving Records: 2617

When Mated With	%	Reliability
Dairy Heifers Breed Avg: 8.4% All Breeds Avg: 12.5%	8.26%	93% (V High)
Dairy Cows Breed Avg: 2.8% All Breeds Avg: 4.9%	3.12%	99% (V High)

Expected Progeny Performance Carcass Records: 0

Star Rating (within breed)	Key Profit Traits	Index Value	Trait Reliability	Star Rating (across all beef breeds)
★★★★★	Gestation Length (Days)	-2.52	99% (V High)	★★★★★
	Expected Gestation Length (Days)	278		
★★★★★	Carcass Weight (Kg)	11.9 Kg	97% (V High)	★★★★☆
★★★★★	Carcass Conformation (1-5 Scale)	0.91 scale	97% (V High)	★★★★☆
★★★★☆	Feed Intake	0.57d	66%	★★★★☆
★★★★★	% Meeting Factory Specification	-24.86 scale		★★★★☆
★★★★☆	Age at Slaughter	-16.77d	94%	★★★★★

Ancestry





AUGHNAMONA U ECSTATIC



Sire Overview

Young Test Bull

D.O.B 09-AUG-21

ID 20217629

Breed AA 100%

Bred By Donal Spring, Co. Leitrim

Myostatin Status +/- (Non-Carrier)

Price €10.00 Conventional

Download PDF Add to Shortlist

Economic indexes

Star Rating (within breed)	Economic Index	€ Value per progeny	Index Reliability	Star Rating (across all beef breeds)
★★★★★	Dairy Beef Index (DBI)	€144	44% (Average)	★★★★★
★★★★★	Beef Sub Index	€114	42% (Average)	★★★☆☆
★★★★☆	Calving Sub Index	€26	46% (Average)	★★★★★

Calving Difficulty Total Dairy Calving Records: 0

When Mated With	%	Reliability
Dairy Heifers Breed Avg: 8.4% All Breeds Avg: 12.5%	8.53%	45% (Average)
Dairy Cows Breed Avg: 2.8% All Breeds Avg: 4.9%	2.97%	47% (Average)

Expected Progeny Performance Carcass Records: 0

Star Rating (within breed)	Key Profit Traits	Index Value	Trait Reliability	Star Rating (across all beef breeds)
★★★★☆	Gestation Length (Days)	-0.43	44% (Average)	★★★★★
	Expected Gestation Length (Days)	280		
★★★★★	Carcass Weight (Kg)	14.9 Kg	43% (Average)	★★★☆☆
★★★★★	Carcass Conformation (1-5 Scale)	0.97 scale	40% (Average)	★★★☆☆
★★★☆☆	Feed Intake	0.45d	34%	★★★☆☆
★★★★★	% Meeting Factory Specification	-25.02 scale		★★★☆☆
★★★★★	Age at Slaughter	-19.81d	57%	★★★★★

Ancestry





Coolrain Patriarch AA5280



Sire Overview

Finishing

D.O.B 20-AUG-17

ID 20174273

Breed AA 100%

Bred By Nigel Peavoy, Portlaois, Co. Laois

Myostatin Status +/- (Non-Carrier)

Price €14.00 Conventional

Download PDF Add to Shortlist

Economic indexes

Star Rating (within breed)	Economic Index	€ Value per progeny	Index Reliability	Star Rating (across all beef breeds)
★★★★★	Dairy Beef Index (DBI)	€141	94% (V High)	★★★★★
★★★★★	Beef Sub Index	€104	91% (V High)	★★★★☆
★★★★☆	Calving Sub Index	€30	98% (V High)	★★★★★

Calving Difficulty Total Dairy Calving Records: 3621

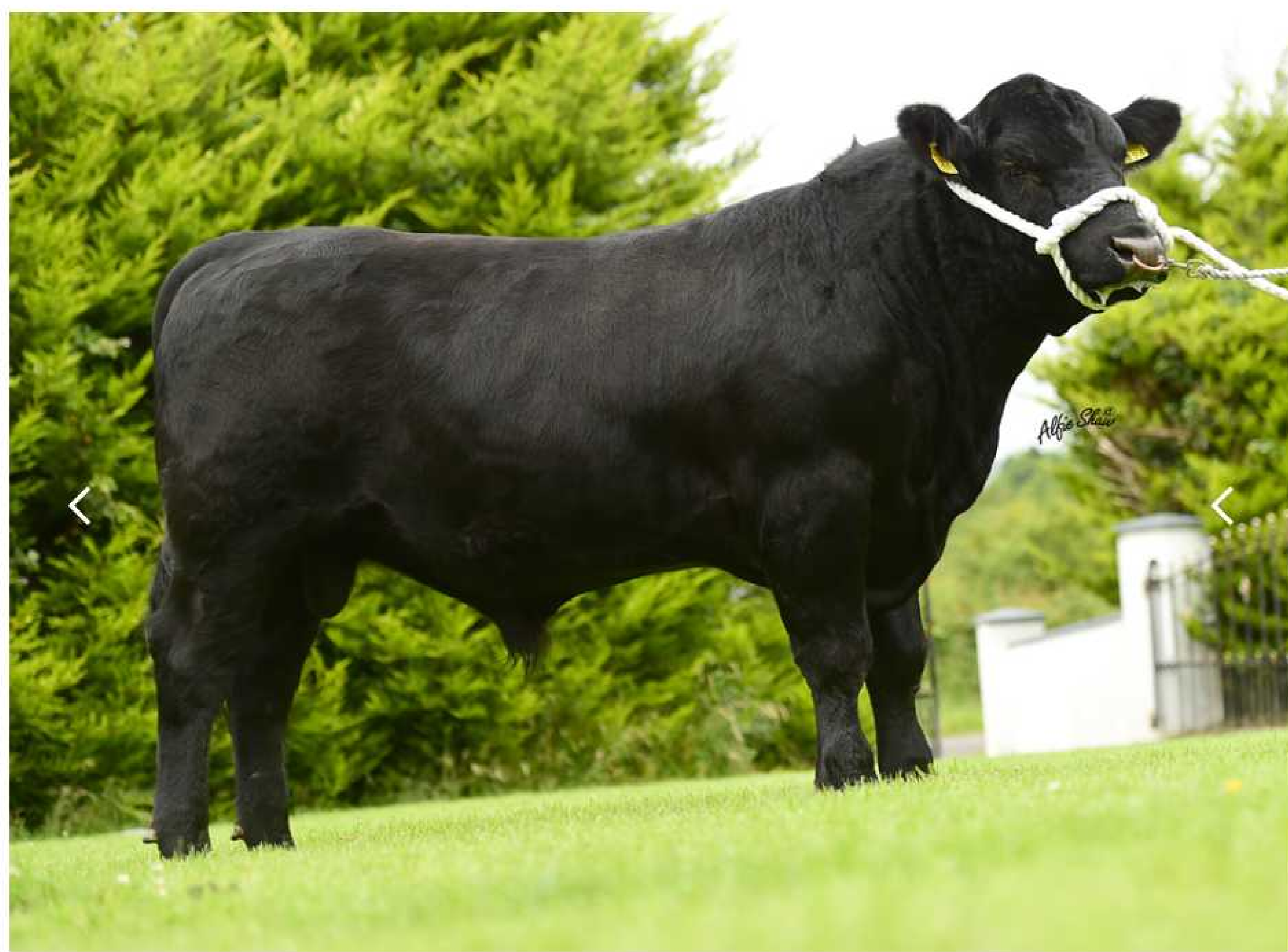
When Mated With	%	Reliability
Dairy Heifers Breed Avg: 8.4% All Breeds Avg: 12.5%	9.34%	92% (V High)
Dairy Cows Breed Avg: 2.8% All Breeds Avg: 4.9%	3.44%	99% (V High)

Expected Progeny Performance Carcass Records: 0

Star Rating (within breed)	Key Profit Traits	Index Value	Trait Reliability	Star Rating (across all beef breeds)
★★★★★	Gestation Length (Days)	-1.79	99% (V High)	★★★★★
	Expected Gestation Length (Days)	279		
★★★★☆	Carcass Weight (Kg)	8.4 Kg	99% (V High)	★★★★☆
★★★★☆	Carcass Conformation (1-5 Scale)	0.67 scale	99% (V High)	★★★★☆
★★★★★	Feed Intake	0.14d	68%	★★★★☆
★★★★☆	% Meeting Factory Specification	-27.29 scale		★★★★☆
★★★★☆	Age at Slaughter	-15.47d	98%	★★★★★

Ancestry





ST Aodain L Master



Sire Overview

D.O.B	21-MAR-14
Breed	AA 100%
Price	€10.00 Conventional

Download PDF Add to Shortlist

Economic indexes

Star Rating (within breed)	Economic Index	€ Value per progeny	Index Reliability	Star Rating (across all beef breeds)
★★★★☆	Dairy Beef Index (DBI)	€119	95% (V High)	★★★★★
★★★★★	Beef Sub Index	€104	93% (V High)	★★★★☆
★★★☆☆	Calving Sub Index	€10	99% (V High)	★★★★★

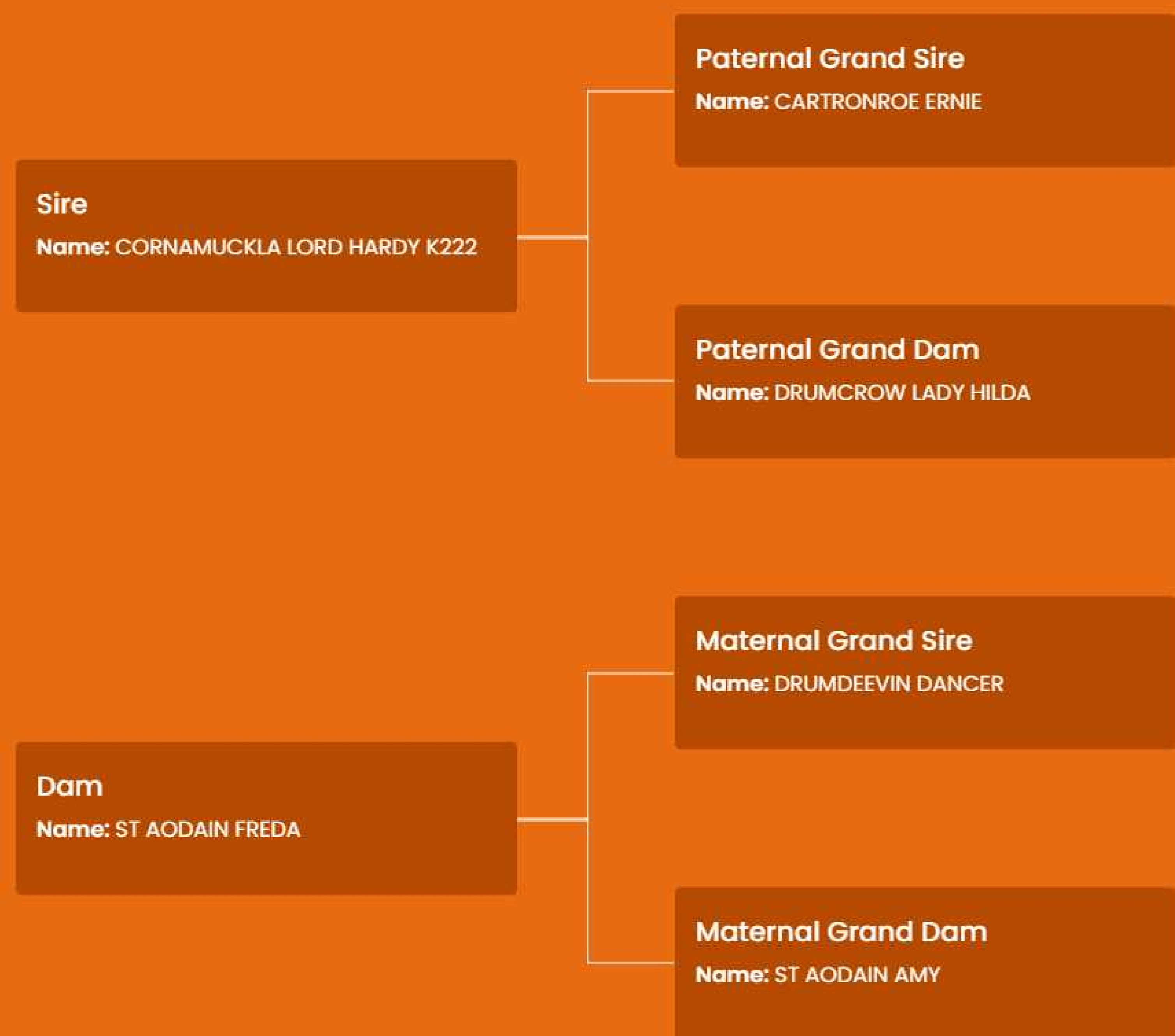
Calving Difficulty Total Dairy Calving Records: 4932

When Mated With	%	Reliability
Dairy Heifers Breed Avg: 8.4% All Breeds Avg: 12.5%	10.34%	97% (V High)
Dairy Cows Breed Avg: 2.8% All Breeds Avg: 4.9%	3.78%	99% (V High)

Expected Progeny Performance Carcass Records: 0

Star Rating (within breed)	Key Profit Traits	Index Value	Trait Reliability	Star Rating (across all beef breeds)
★★★☆☆	Gestation Length (Days)	0.01	99% (V High)	★★★★★
	Expected Gestation Length (Days)	280		
★★★★★	Carcass Weight (Kg)	13.1 Kg	99% (V High)	★★★★☆
★★★★☆	Carcass Conformation (1-5 Scale)	0.78 scale	99% (V High)	★★★★☆
★★★☆☆	Feed Intake	0.5d	74%	★★★★☆
★★★★☆	% Meeting Factory Specification	-26.75 scale		★★★★☆
★★★★★	Age at Slaughter	-19.89d	99%	★★★★★

Ancestry





FISHER 1 PROFILE P456



Sire Overview

Finishing Easy Calving Polled

D.O.B 02-MAR-17

ID UK263027500456

Breed HE 100%

Bred By Wj Hutchings+ Sons, Uk

Myostatin Status +/+ (Non-Carrier)

Price €14.00 Conventional

Download PDF Add to Shortlist

Economic indexes

Star Rating (within breed)	Economic Index	€ Value per progeny	Index Reliability	Star Rating (across all beef breeds)
★★★★★	Dairy Beef Index (DBI)	€149	93% (V High)	★★★★★
★★★★★	Beef Sub Index	€113	90% (V High)	★★★★★
★★★★★	Calving Sub Index	€28	98% (V High)	★★★★★

Calving Difficulty

Total Dairy Calving Records: 10787

When Mated With	%	Reliability
Dairy Heifers Breed Avg: 11.2% All Breeds Avg: 12.5%	10.6%	91% (V High)
Dairy Cows Breed Avg: 4.2% All Breeds Avg: 4.9%	3.59%	99% (V High)

Expected Progeny Performance

Carcass Records: 0

Star Rating (within breed)	Key Profit Traits	Index Value	Trait Reliability	Star Rating (across all beef breeds)
★★★★★	Gestation Length (Days)	-2.19	99% (V High)	★★★★★
	Expected Gestation Length (Days)	278		
★★★★★	Carcass Weight (Kg)	3.8 Kg	99% (V High)	★★★★★
★★★★★	Carcass Conformation (1-5 Scale)	0.78 scale	99% (V High)	★★★★★
★★★★★	Feed Intake	-0.54d	64%	★★★★★
★★★★★	% Meeting Factory Specification	-27.49 scale		★★★★★
★★★★★	Age at Slaughter	-15.08d	99%	★★★★★

Ancestry





Sire Overview

Easy Calving Polled

D.O.B	26-MAR-18
ID	UK103000101026
Breed	HE 100%
Price	€12.00 Conventional

Download PDF Add to Shortlist

BARWISE 1 RICOCHET

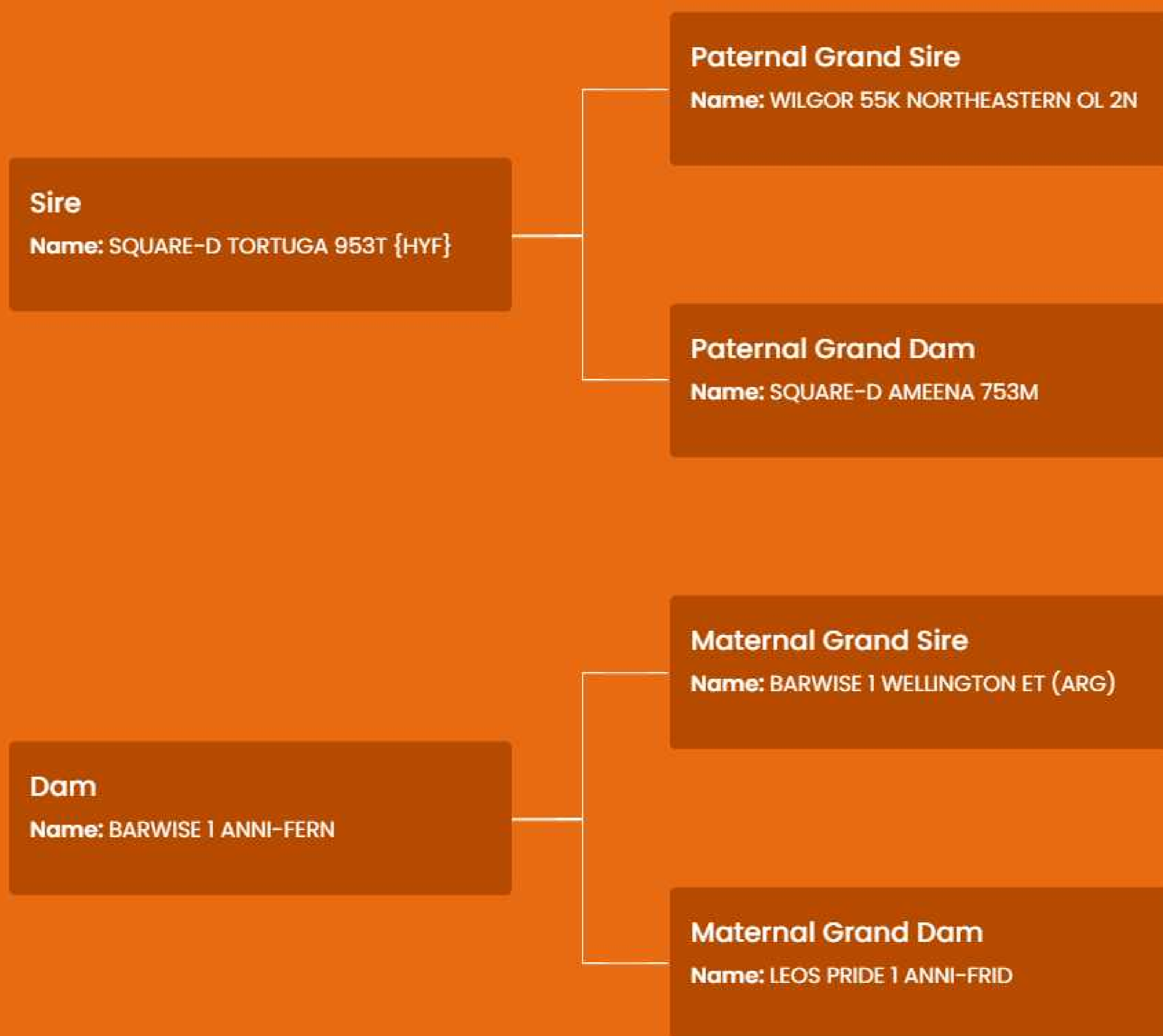


Economic indexes				
Star Rating (within breed)	Economic Index	€ Value per progeny	Index Reliability	Star Rating (across all beef breeds)
★★★★★	Dairy Beef Index (DBI)	€148	92% (V High)	★★★★★
★★★★☆	Beef Sub Index	€91	89% (V High)	★★★★☆
★★★★★	Calving Sub Index	€48	96% (V High)	★★★★★

Calving Difficulty			Total Dairy Calving Records: 1707
When Mated With	%	Reliability	
Dairy Heifers Breed Avg: 11.2% All Breeds Avg: 12.5%	6.45%	80% (V High)	
Dairy Cows Breed Avg: 4.2% All Breeds Avg: 4.9%	2.86%	98% (V High)	

Expected Progeny Performance				Carcass Records: 0
Star Rating (within breed)	Key Profit Traits	Index Value	Trait Reliability	Star Rating (across all beef breeds)
★★★★★	Gestation Length (Days)	-2.29	99% (V High)	★★★★★
	Expected Gestation Length (Days)	278		
★★★★☆	Carcass Weight (Kg)	0.9 Kg	98% (V High)	★★★★☆
★★★★☆	Carcass Conformation (1-5 Scale)	0.67 scale	98% (V High)	★★★★☆
★★★★★	Feed Intake	-0.26d	65%	★★★★★
★★★★☆	% Meeting Factory Specification	-31.15 scale		★★★★☆
★★★★☆	Age at Slaughter	-17.18d	96%	★★★★★

Ancestry





NEW

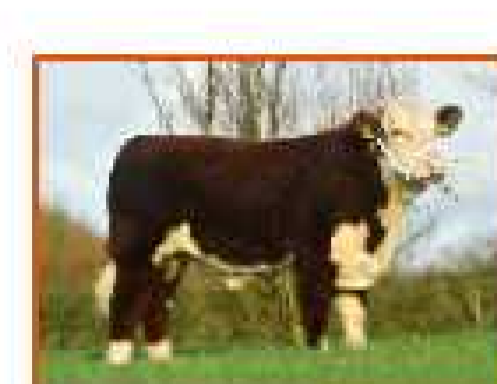
DAIRY BEEF BULL

HOMOZYGOUS POLLED

PEDIGREE ROYALTY



GOULDINGPOLL 1 NIJINSKY PP



Sire Overview

Polled Young Test Bull

D.O.B 18-DEC-21

Breed HE 100%

Bred By Matthew Goulding, Ballyduff, Co. Kerry

Myostatin Status +/- (Non-Carrier)

Price €14.00 Conventional

Download PDF

Add to Shortlist

Economic indexes

Star Rating (within breed)	Economic Index	€ Value per progeny	Index Reliability	Star Rating (across all beef breeds)
★★★★★	Dairy Beef Index (DBI)	€142	48% (Average)	★★★★★
★★★★★	Beef Sub Index	€109	46% (Average)	★★★☆☆
★★★★★	Calving Sub Index	€28	52% (Average)	★★★★★

Calving Difficulty

Total Dairy Calving Records: 0

When Mated With	%	Reliability
Dairy Heifers Breed Avg: 11.2% All Breeds Avg: 12.5%	8.38%	52% (Average)
Dairy Cows Breed Avg: 4.2% All Breeds Avg: 4.9%	3.56%	56% (Average)

Expected Progeny Performance

Carcass Records: 0

Star Rating (within breed)	Key Profit Traits	Index Value	Trait Reliability	Star Rating (across all beef breeds)
★★★★★	Gestation Length (Days)	-1.32	47% (Average)	★★★★★
	Expected Gestation Length (Days)	279		
★★★★★	Carcass Weight (Kg)	12.2 Kg	46% (Average)	★★★☆☆
★★★★★	Carcass Conformation (1-5 Scale)	0.77 scale	46% (Average)	★★★☆☆
★★★☆☆	Feed Intake	0.29d	38%	★★★☆☆
★★★★★	% Meeting Factory Specification	-25.29 scale		★★★☆☆
★★★☆☆	Age at Slaughter	-16.77d	63%	★★★★★

Ancestry





SOLPOLL 1 WATSON



Sire Overview

Polled Young Test Bull

D.O.B 19-OCT-21

Breed HE 100%

Bred By J & W McMordie, Ballygowan, Co. Down

Myostatin Status +/- (Non-Carrier)

Price €10.00 Conventional

Download PDF Add to Shortlist

Economic indexes

Star Rating (within breed)	Economic Index	€ Value per progeny	Index Reliability	Star Rating (across all beef breeds)
★★★★★	Dairy Beef Index (DBI)	€131	42% (Average)	★★★★★
★★★★★	Beef Sub Index	€110	40% (Average)	★★★☆☆
★★★★★	Calving Sub Index	€13	44% (Average)	★★★★★

Calving Difficulty Total Dairy Calving Records: 0

When Mated With	%	Reliability
Dairy Heifers Breed Avg: 11.2% All Breeds Avg: 12.5%	9.99%	45% (Average)
Dairy Cows Breed Avg: 4.2% All Breeds Avg: 4.9%	4.24%	51% (Average)

Expected Progeny Performance Carcass Records: 0

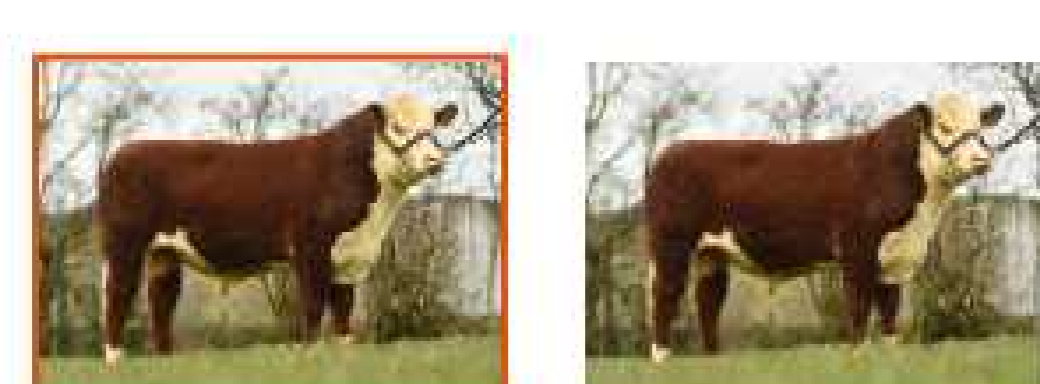
Star Rating (within breed)	Key Profit Traits	Index Value	Trait Reliability	Star Rating (across all beef breeds)
★★★★★	Gestation Length (Days)	-0.89	36% (Low)	★★★★★
	Expected Gestation Length (Days)	279		
★★★★★	Carcass Weight (Kg)	10.4 Kg	40% (Average)	★★★☆☆
★★★★★	Carcass Conformation (1-5 Scale)	0.75 scale	39% (Low)	★★★☆☆
★★★☆☆	Feed Intake	0.18d	33%	★★★☆☆
★★★★★	% Meeting Factory Specification	-27.7 scale		★★★☆☆
★★★★★	Age at Slaughter	-21.97d	60%	★★★★★

Ancestry





INTELAGRI 1 GOLD RUSH ET



Sire Overview

Finishing

D.O.B 20-MAY-20

Breed HE 100%

Bred By Robert Beattie, Manor Kilbride, Co. Wicklow

Myostatin Status +/- (Non-Carrier)

Price €14.00 Conventional

Download PDF Add to Shortlist

Economic indexes				
Star Rating (within breed)	Economic Index	€ Value per progeny	Index Reliability	Star Rating (across all beef breeds)
★★★★★	Dairy Beef Index (DBI)	€126	58% (Average)	★★★★★
★★★★★	Beef Sub Index	€111	47% (Average)	★★★★☆
★★★★☆	Calving Sub Index	€9	79% (High)	★★★★★

Calving Difficulty			Total Dairy Calving Records: 79
When Mated With	%	Reliability	
Dairy Heifers Breed Avg: 11.2% All Breeds Avg: 12.5%	11.87%	57% (Average)	
Dairy Cows Breed Avg: 4.2% All Breeds Avg: 4.9%	4.74%	75% (High)	

Expected Progeny Performance				Carcass Records: 0
Star Rating (within breed)	Key Profit Traits	Index Value	Trait Reliability	Star Rating (across all beef breeds)
★★★★★	Gestation Length (Days)	-1.99	90% (V High)	★★★★★
	Expected Gestation Length (Days)	278		
★★★★★	Carcass Weight (Kg)	12.9 Kg	47% (Average)	★★★★☆
★★★★★	Carcass Conformation (1-5 Scale)	0.79 scale	47% (Average)	★★★★☆
★★★★☆	Feed Intake	0.29d	40%	★★★★☆
★★★★★	% Meeting Factory Specification	-26.31 scale		★★★★☆
★★★★☆	Age at Slaughter	-17.58d	65%	★★★★★

Ancestry



DAIRY BEEF BULL

CALVING EASE MATURE ONLY

HOMOZYGOUS POLLED



SOLPOLL 1 SONIC



Sire Overview

Polled

D.O.B 27-JAN-19

ID UK933001331221

Breed HE 100%

Bred By W & J McMordie, Ni

Price €12.00 Conventional

Download PDF Add to Shortlist

Economic indexes

Star Rating (within breed)	Economic Index	€ Value per progeny	Index Reliability	Star Rating (across all beef breeds)
★★★★★	Dairy Beef Index (DBI)	€107	92% (V High)	★★★★★
★★★★★	Beef Sub Index	€91	89% (V High)	★★★★★
★★★★★	Calving Sub Index	€13	96% (V High)	★★★★★

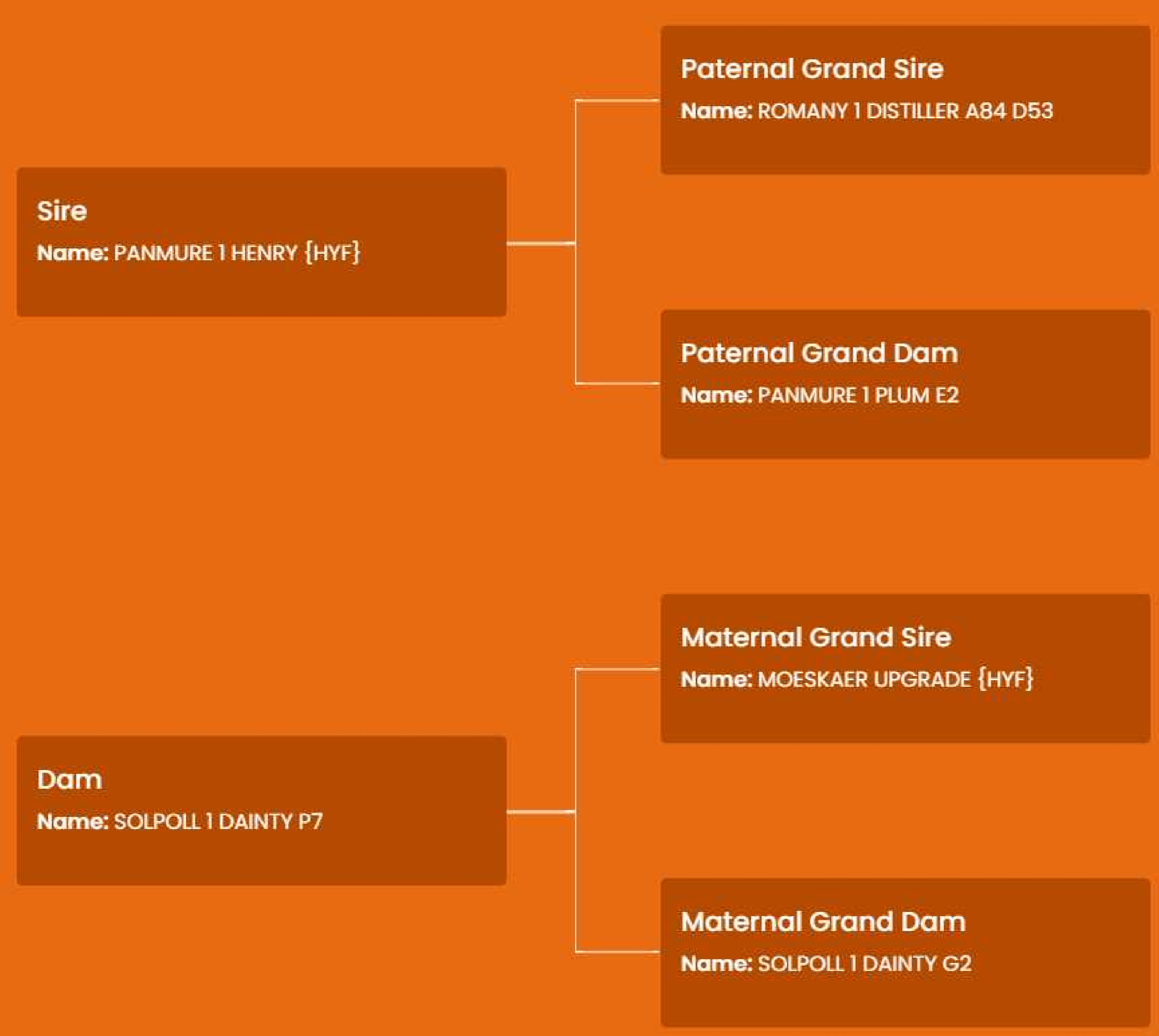
Calving Difficulty Total Dairy Calving Records: 2785

When Mated With	%	Reliability
Dairy Heifers Breed Avg: 11.2% All Breeds Avg: 12.5%	9.99%	74% (High)
Dairy Cows Breed Avg: 4.2% All Breeds Avg: 4.9%	3.91%	99% (V High)

Expected Progeny Performance Carcass Records: 0

Star Rating (within breed)	Key Profit Traits	Index Value	Trait Reliability	Star Rating (across all beef breeds)
★★★★★	Gestation Length (Days)	-0.26	99% (V High)	★★★★★
	Expected Gestation Length (Days)	280		
★★★★★	Carcass Weight (Kg)	5 Kg	97% (V High)	★★★★★
★★★★★	Carcass Conformation (1-5 Scale)	0.57 scale	96% (V High)	★★★★★
★★★★★	Feed Intake	-0.01d	69%	★★★★★
★★★★★	% Meeting Factory Specification	-28.2 scale		★★★★★
★★★★★	Age at Slaughter	-11.31d	92%	★★★★★

Ancestry



HE9610 MIDFORD 1 WHIZZBANG PP PDP

USE ON : TEST

Download PDF

Add to Shortlist

NEW

DAIRY BEEF BULL

HOMOZYGOUS POLLED



MIDFORD 1 WHIZZBANG PP



Sire Overview

Polled Young Test Bull

D.O.B 07-JAN-22

ID UK322510300063

Breed HE 100%

Bred By Will Awan, Uk

Myostatin Status +/- (Non-Carrier)

Price €10.00 Conventional

Download PDF

Add to Shortlist

Economic indexes

Star Rating (within breed)	Economic Index	€ Value per progeny	Index Reliability	Star Rating (across all beef breeds)
★★★★★	Dairy Beef Index (DBI)	€105	45% (Average)	★★★★★
★★★★★	Beef Sub Index	€113	43% (Average)	★★★★★
★★★☆☆	Calving Sub Index	€-14	48% (Average)	★★★★★

Calving Difficulty

Total Dairy Calving Records: 0

When Mated With	%	Reliability
Dairy Heifers Breed Avg: 11.2% All Breeds Avg: 12.5%	13.82%	42% (Average)
Dairy Cows Breed Avg: 4.2% All Breeds Avg: 4.9%	5.65%	54% (Average)

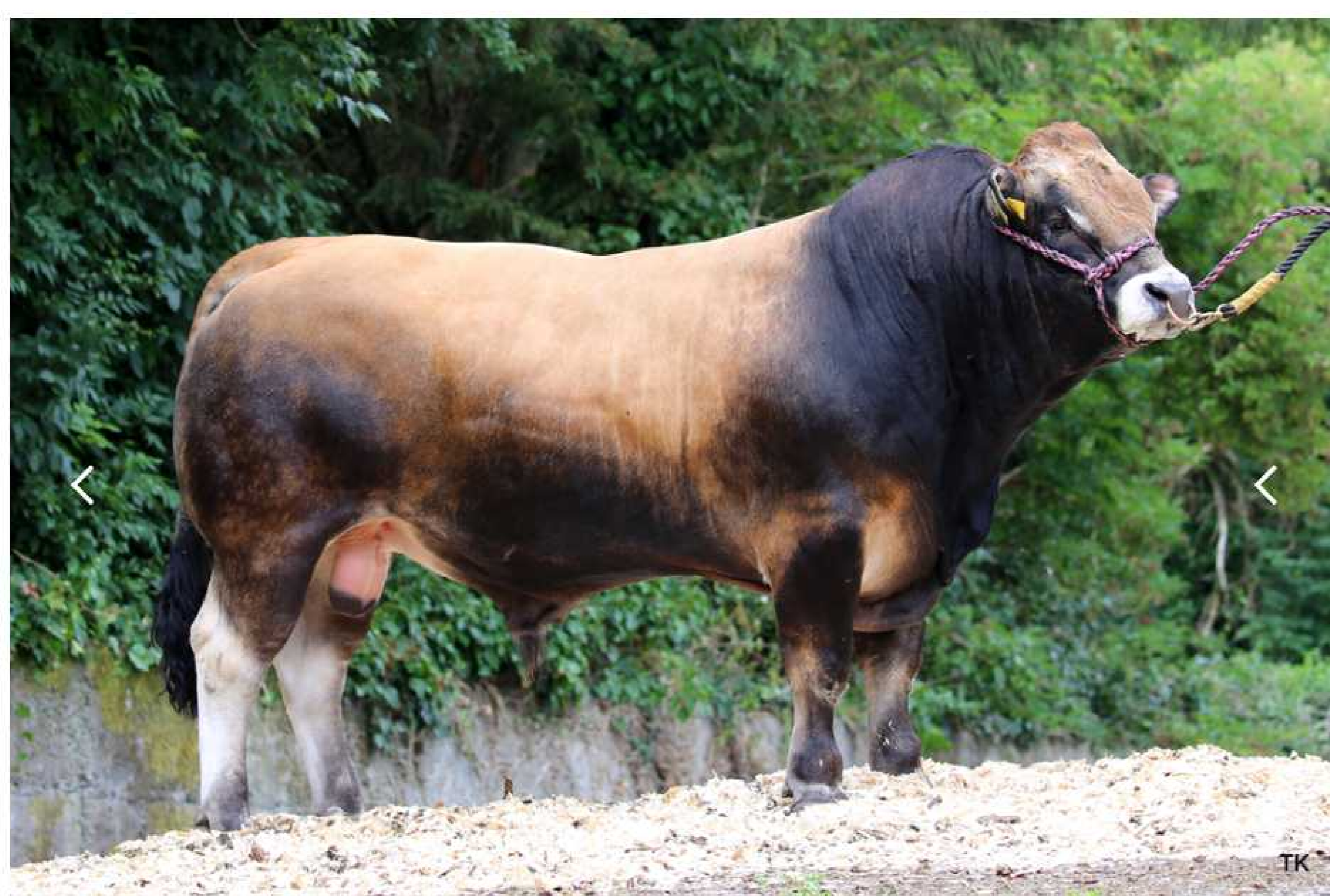
Expected Progeny Performance

Carcass Records: 0

Star Rating (within breed)	Key Profit Traits	Index Value	Trait Reliability	Star Rating (across all beef breeds)
★★★★★	Gestation Length (Days)	-1.44	43% (Average)	★★★★★
	Expected Gestation Length (Days)	279		
★★★★★	Carcass Weight (Kg)	11.8 Kg	43% (Average)	★★★★★
★★★★★	Carcass Conformation (1-5 Scale)	0.55 scale	42% (Average)	★★★★★
★★★★★	Feed Intake	0.13d	34%	★★★★★
★★★★★	% Meeting Factory Specification	-27.98 scale		★★★★★
★★★★★	Age at Slaughter	-19.43d	62%	★★★★★

Ancestry





TURLOUGHMORE MAGNIFICENT



Sire Overview

Weanling
Finishing
Replacement

Easy Calving

D.O.B 20-JAN-17

Breed AU 100%

Bred By Kevin O' Brien, Athenry, Co. Galway

Myostatin Status Profit gene: F94L/F94L(2 Copies)

Price €14.00 Conventional

Download PDF

Add to Shortlist

Economic indexes

Star Rating (within breed)	Economic Index	€ Value per progeny	Index Reliability	Star Rating (across all beef breeds)
★★★★★	Dairy Beef Index (DBI)	€176	94% (V High)	★★★★★
★★★★★	Beef Sub Index	€162	92% (V High)	★★★★★
★★★★★	Calving Sub Index	€16	98% (V High)	★★★★★

Calving Difficulty

Total Dairy Calving Records: 4547

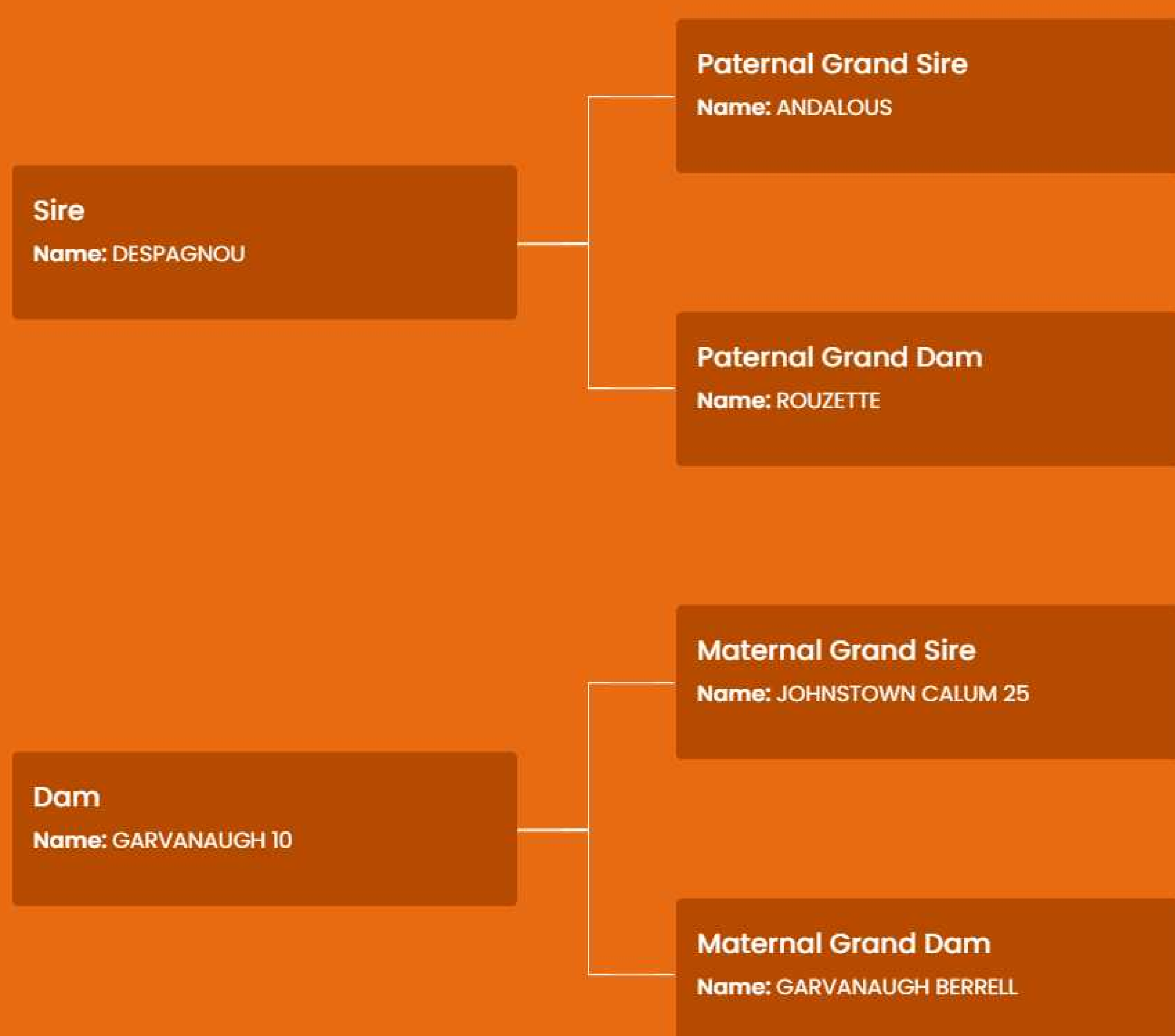
When Mated With	%	Reliability
Dairy Heifers Breed Avg: 8.4% All Breeds Avg: 12.5%	7.52%	91% (V High)
Dairy Cows Breed Avg: 3.4% All Breeds Avg: 4.9%	3.6%	99% (V High)

Expected Progeny Performance

Carcass Records: 0

Star Rating (within breed)	Key Profit Traits	Index Value	Trait Reliability	Star Rating (across all beef breeds)
★★★★★	Gestation Length (Days)	0.61	99% (V High)	★★★★★
	Expected Gestation Length (Days)	281		
★★★★★	Carcass Weight (Kg)	19.1 Kg	99% (V High)	★★★★★
★★★★★	Carcass Conformation (1-5 Scale)	1.79 scale	99% (V High)	★★★★★
★★★★★	Feed Intake	-0.68d	73%	★★★★★
★★★★★	% Meeting Factory Specification	-19.32 scale		★★★★★
★★★★★	Age at Slaughter	-8.27d	99%	★★★★★

Ancestry





MOUNTCAIN ONDEE



Sire Overview

D.O.B	10-MAR-19
Breed	AU 100%
Bred By	Denis Linehan, Mallow, Co. Cork
Myostatin Status	Profit gene: F94L/F94L(2 Copies)
Price	€12.00 Conventional

Download PDF

Add to Shortlist

Economic indexes				
Star Rating (within breed)	Economic Index	€ Value per progeny	Index Reliability	Star Rating (across all beef breeds)
★★★★★	Dairy Beef Index (DBI)	€146	91% (V High)	★★★★★
★★★★★	Beef Sub Index	€123	91% (V High)	★★★★★
★★★★★	Calving Sub Index	€22	91% (V High)	★★★★★

Calving Difficulty			Total Dairy Calving Records: 678
When Mated With	%	Reliability	
Dairy Heifers Breed Avg: 8.4% All Breeds Avg: 12.5%	9.29%	53% (Average)	
Dairy Cows Breed Avg: 3.4% All Breeds Avg: 4.9%	3.72%	96% (V High)	

Expected Progeny Performance				Carcass Records: 0
Star Rating (within breed)	Key Profit Traits	Index Value	Trait Reliability	Star Rating (across all beef breeds)
★★★★★	Gestation Length (Days)	-0.97	99% (V High)	★★★★★
	Expected Gestation Length (Days)	279		
★★★★★	Carcass Weight (Kg)	9 Kg	96% (V High)	★★★★★
★★★★★	Carcass Conformation (1-5 Scale)	1.61 scale	94% (V High)	★★★★★
★★★★★	Feed Intake	-0.65d	80%	★★★★★
★★★★★	% Meeting Factory Specification	-22.03 scale		★★★★★
★★★★★	Age at Slaughter	-4.31d	92%	★★★★★

Ancestry



BB1147 ENJEU DU BOIS DERNEUX PED

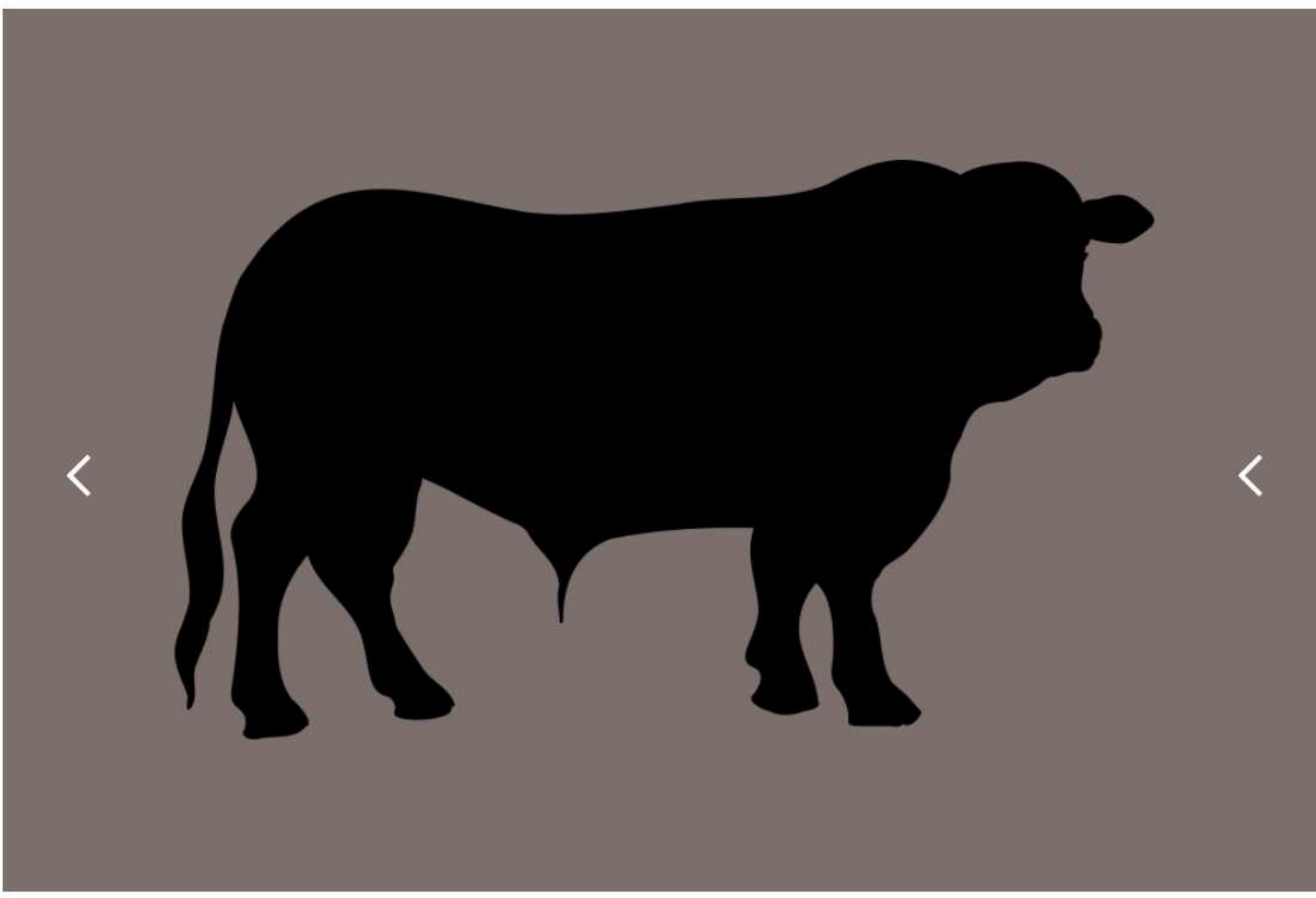
USE ON : MATURE ONLY

Download PDF

Add to Shortlist

CALVING EASE MATURE ONLY

DAIRY BEEF BULL



N/A



Sire Overview

D.O.B	13-JAN-21
ID	BE561865800
Breed	BB 100%
Myostatin Status	NT821/NT821 (2 Copies)
Price	€10.00 Conventional

Download PDF

Add to Shortlist

Economic indexes

Star Rating (within breed)	Economic Index	€ Value per progeny	Index Reliability	Star Rating (across all beef breeds)
★★★★★	Dairy Beef Index (DBI)	€141	46% (Average)	★★★★★
★★★☆☆	Beef Sub Index	€175	43% (Average)	★★★★★
★★★★★	Calving Sub Index	€-30	50% (Average)	★★★★☆

Calving Difficulty

Total Dairy Calving Records: 0

When Mated With	%	Reliability
Dairy Heifers Breed Avg: 19.2% All Breeds Avg: 12.5%	14%	36% (Low)
Dairy Cows Breed Avg: 8.7% All Breeds Avg: 4.9%	6.68%	58% (Average)

Expected Progeny Performance

Carcass Records: 0

Star Rating (within breed)	Key Profit Traits	Index Value	Trait Reliability	Star Rating (across all beef breeds)
★★★★★	Gestation Length (Days)	-1.74	45% (Average)	★★★★★
	Expected Gestation Length (Days)	279		
★★★☆☆	Carcass Weight (Kg)	27.5 Kg	44% (Average)	★★★★★
★★★☆☆	Carcass Conformation (1-5 Scale)	2.5 scale	44% (Average)	★★★★★
★★★★★	Feed Intake	-0.53d	34%	★★★★★
★★★★☆	% Meeting Factory Specification	-22.19 scale		★★★☆☆
★★★★★	Age at Slaughter	0.74d	61%	★★★☆☆

Ancestry





Sire Overview

D.O.B	13-OCT-18
ID	NL627944813
Breed	BB 100%
Myostatin Status	NT821/NT821 (2 Copies)
Price	€10.00 Conventional

Download PDF Add to Shortlist

STEF VD BLOMSTEEG



Economic indexes

Star Rating (within breed)	Economic Index	€ Value per progeny	Index Reliability	Star Rating (across all beef breeds)
★★★★★	Dairy Beef Index (DBI)	€140	50% (Average)	★★★★★
★☆☆☆☆	Beef Sub Index	€169	35% (Low)	★★★★★
★★★★★	Calving Sub Index	€-22	79% (High)	★★★★★

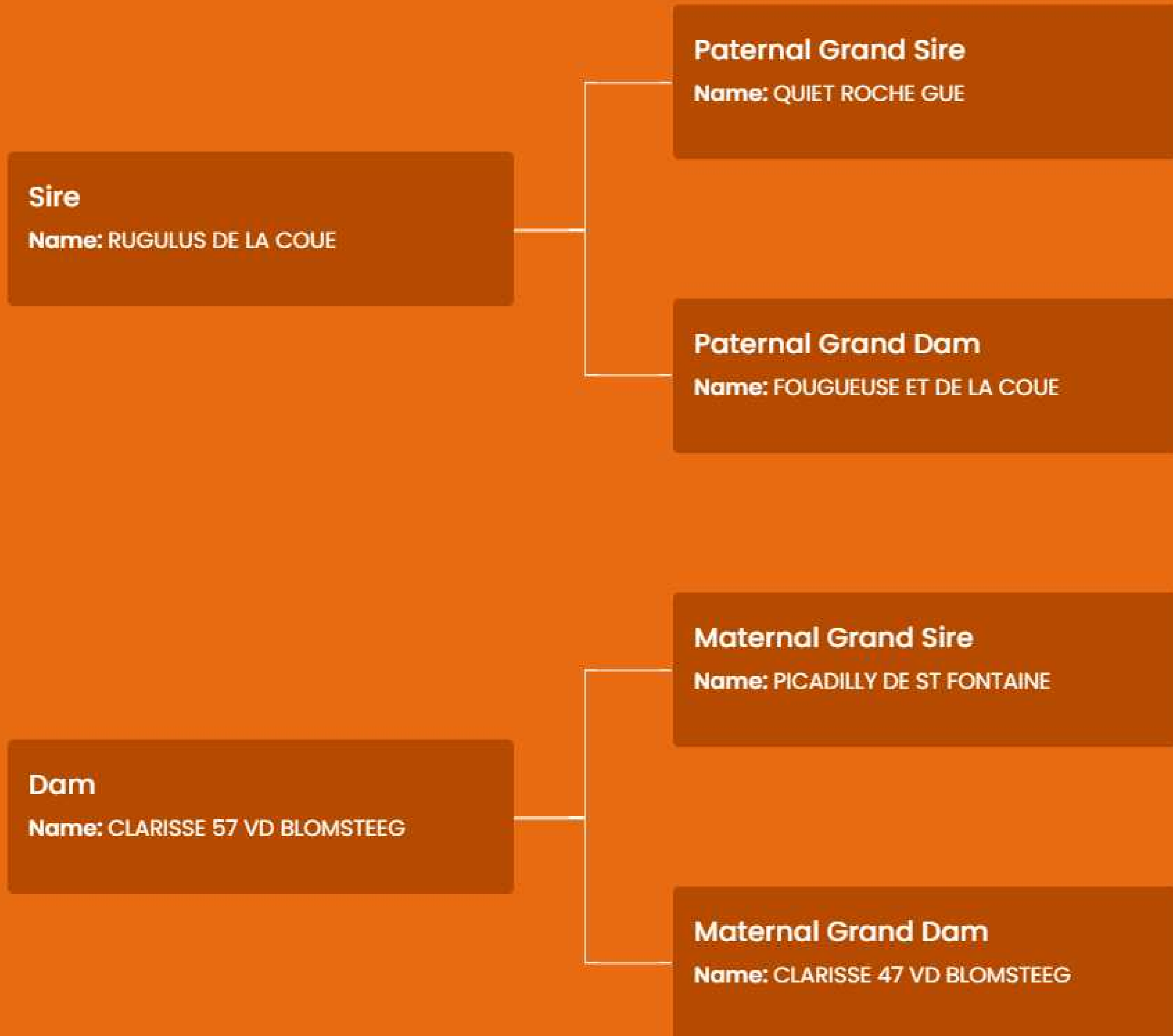
Calving Difficulty Total Dairy Calving Records: 113

When Mated With	%	Reliability
Dairy Heifers Breed Avg: 19.2% All Breeds Avg: 12.5%	13.29%	33% (Low)
Dairy Cows Breed Avg: 8.7% All Breeds Avg: 4.9%	6.01%	79% (High)

Expected Progeny Performance Carcass Records: 0

Star Rating (within breed)	Key Profit Traits	Index Value	Trait Reliability	Star Rating (across all beef breeds)
★★★★★	Gestation Length (Days)	-1	94% (V High)	★★★★★
	Expected Gestation Length (Days)	279		
★☆☆☆☆	Carcass Weight (Kg)	29.2 Kg	34% (Low)	★★★★★
★☆☆☆☆	Carcass Conformation (1-5 Scale)	2.42 scale	34% (Low)	★★★★★
★☆☆☆☆	Feed Intake	-0.28d	31%	★★★★★
★★★★★	% Meeting Factory Specification	-21.85 scale		★★★★★
★☆☆☆☆	Age at Slaughter	6.11d	53%	★★★★★

Ancestry





BBG ELK 2341 DE BOULOGNE



Sire Overview

Young Test Bull

D.O.B	28-MAR-21
ID	BE164612717
Breed	BB 100%
Myostatin Status	NT821/NT821 (2 Copies)
Price	€10.00 Conventional

Download PDF

Add to Shortlist

Economic indexes

Star Rating (within breed)	Economic Index	€ Value per progeny	Index Reliability	Star Rating (across all beef breeds)
★★★★★	Dairy Beef Index (DBI)	€131	34% (Low)	★★★★★
★☆☆☆☆	Beef Sub Index	€134	33% (Low)	★★★★☆
★★★★★	Calving Sub Index	€0	35% (Low)	★★★★★

Calving Difficulty

Total Dairy Calving Records: 0

When Mated With	%	Reliability
Dairy Heifers Breed Avg: 19.2% All Breeds Avg: 12.5%	11.11%	31% (Low)
Dairy Cows Breed Avg: 8.7% All Breeds Avg: 4.9%	5.54%	40% (Average)

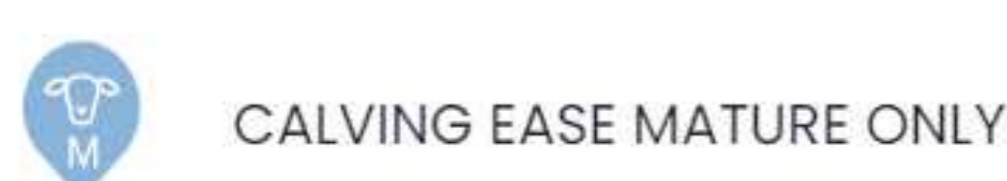
Expected Progeny Performance

Carcass Records: 0

Star Rating (within breed)	Key Profit Traits	Index Value	Trait Reliability	Star Rating (across all beef breeds)
★★★★★	Gestation Length (Days)	-1.74	31% (Low)	★★★★★
	Expected Gestation Length (Days)	279		
★★★★☆	Carcass Weight (Kg)	17.4 Kg	31% (Low)	★★★★☆
★★★★☆	Carcass Conformation (1-5 Scale)	2.15 scale	31% (Low)	★★★★★
★★★★☆	Feed Intake	-0.31d	31%	★★★★☆
★★★★★	% Meeting Factory Specification	-21.57 scale		★★★★☆
★★★★☆	Age at Slaughter	4.97d	52%	★★★★☆

Ancestry





TIC Pp



Sire Overview

D.O.B	04-APR-19
ID	BE564370556
Breed	BB 100%
Myostatin Status	NT821/NT821 (2 Copies)
Price	€14.00 Conventional €0.00 Female Sexed €0.00 Male Sexed

Download PDF

Add to Shortlist

Economic indexes

Star Rating (within breed)	Economic Index	€ Value per progeny	Index Reliability	Star Rating (across all beef breeds)
★★★★★	Dairy Beef Index (DBI)	€123	67% (High)	★★★★★
★★★★☆	Beef Sub Index	€153	56% (Average)	★★★★★
★★★★★	Calving Sub Index	€-25	88% (V High)	★★★★☆

Calving Difficulty

Total Dairy Calving Records: 475

When Mated With	%	Reliability
Dairy Heifers Breed Avg: 19.2% All Breeds Avg: 12.5%	13.86%	35% (Low)
Dairy Cows Breed Avg: 8.7% All Breeds Avg: 4.9%	6.09%	95% (V High)

Expected Progeny Performance

Carcass Records: 0

Star Rating (within breed)	Key Profit Traits	Index Value	Trait Reliability	Star Rating (across all beef breeds)
★★★★★	Gestation Length (Days)	-1	98% (V High)	★★★★★
	Expected Gestation Length (Days)	279		
★★★★☆	Carcass Weight (Kg)	19.7 Kg	65% (High)	★★★★☆
★★★★☆	Carcass Conformation (1-5 Scale)	2.56 scale	56% (Average)	★★★★★
★★★★☆	Feed Intake	-0.45d	39%	★★★★★
★★★★☆	% Meeting Factory Specification	-23.91 scale		★★★★☆
★★★★☆	Age at Slaughter	4.02d	55%	★★★★☆

Ancestry





ENLEVE DU BOIS DESNEUX



Sire Overview

Young Test Bull

D.O.B 27-FEB-21

ID BE064582935

Breed BB 100%

Myostatin Status NT821/NT821 (2 Copies)

Price €10.00 Conventional

Download PDF Add to Shortlist

Economic indexes

Star Rating (within breed)	Economic Index	€ Value per progeny	Index Reliability	Star Rating (across all beef breeds)
★★★★★	Dairy Beef Index (DBI)	€121	47% (Average)	★★★★★
★★★☆☆	Beef Sub Index	€162	45% (Average)	★★★★★
★★★★★	Calving Sub Index	€-36	51% (Average)	★★★★☆

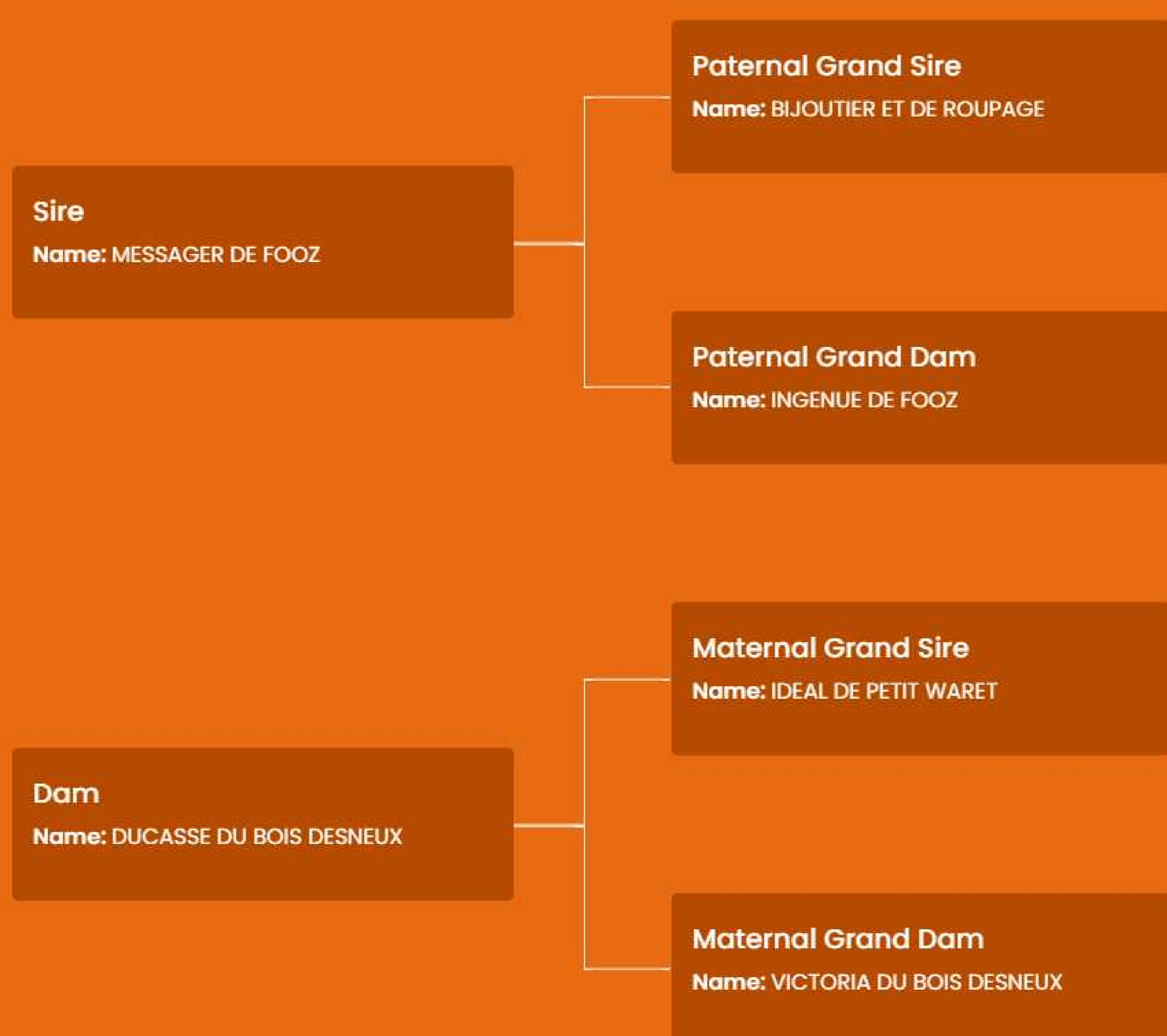
Calving Difficulty Total Dairy Calving Records: 0

When Mated With	%	Reliability
Dairy Heifers Breed Avg: 19.2% All Breeds Avg: 12.5%	14.45%	40% (Average)
Dairy Cows Breed Avg: 8.7% All Breeds Avg: 4.9%	6.68%	59% (Average)

Expected Progeny Performance Carcass Records: 0

Star Rating (within breed)	Key Profit Traits	Index Value	Trait Reliability	Star Rating (across all beef breeds)
★★★★★	Gestation Length (Days)	-1.19	45% (Average)	★★★★★
	Expected Gestation Length (Days)	279		
★★★☆☆	Carcass Weight (Kg)	23 Kg	45% (Average)	★★★★☆
★★★☆☆	Carcass Conformation (1-5 Scale)	2.65 scale	45% (Average)	★★★★★
★★★★☆	Feed Intake	-0.51d	36%	★★★★★
★★★☆☆	% Meeting Factory Specification	-25.5 scale		★★★★☆
★★★★☆	Age at Slaughter	4.49d	66%	★★★★☆

Ancestry





BBG Hybride



Sire Overview

D.O.B	19-JUL-19
ID	BE460938707
Breed	BB 100%
Myostatin Status	NT821/NT821 (2 Copies)
Price	€12.00 Conventional €0.00 Female Sexed €0.00 Male Sexed

Download PDF

Add to Shortlist

Economic indexes

Star Rating (within breed)	Economic Index	€ Value per progeny	Index Reliability	Star Rating (across all beef breeds)
★★★★☆	Dairy Beef Index (DBI)	€77	66% (High)	★★★★☆
★★★★☆	Beef Sub Index	€160	58% (Average)	★★★★★
★★★★★	Calving Sub Index	€-75	82% (V High)	★★★★☆

Calving Difficulty

Total Dairy Calving Records: 171

When Mated With	%	Reliability
Dairy Heifers Breed Avg: 19.2% All Breeds Avg: 12.5%	16%	34% (Low)
Dairy Cows Breed Avg: 8.7% All Breeds Avg: 4.9%	7.29%	85% (V High)

Expected Progeny Performance

Carcass Records: 0

Star Rating (within breed)	Key Profit Traits	Index Value	Trait Reliability	Star Rating (across all beef breeds)
★★★★☆	Gestation Length (Days)	1.33	95% (V High)	★★★★★
	Expected Gestation Length (Days)	282		
★★★★☆	Carcass Weight (Kg)	20.8 Kg	67% (High)	★★★★☆
★★★★☆	Carcass Conformation (1-5 Scale)	2.86 scale	59% (Average)	★★★★★
★★★★★	Feed Intake	-0.57d	39%	★★★★★
★★★★★	% Meeting Factory Specification	-21.2 scale		★★★★☆
★★★★☆	Age at Slaughter	4.01d	60%	★★★★☆

Ancestry





Shannon Stan



Sire Overview

Young Test Bull

D.O.B 02-APR-21

Breed LM 100%

Bred By Sarah Mcelligott, Asdee, Co. Kerry

Myostatin Status +/- (Non-Carrier), Profit gene: F94L/F94L(2 Copies)

Price €14.00 Conventional

Download PDF Add to Shortlist

Economic indexes

Star Rating (within breed)	Economic Index	€ Value per progeny	Index Reliability	Star Rating (across all beef breeds)
★★★★★	Dairy Beef Index (DBI)	€160	48% (Average)	★★★★★
★★★★★	Beef Sub Index	€190	45% (Average)	★★★★★
★★★★★	Calving Sub Index	€-21	51% (Average)	★★★★☆

Calving Difficulty Total Dairy Calving Records: 0

When Mated With	%	Reliability
Dairy Heifers Breed Avg: 12.9% All Breeds Avg: 12.5%	11.72%	37% (Low)
Dairy Cows Breed Avg: 5.1% All Breeds Avg: 4.9%	4.97%	46% (Average)

Expected Progeny Performance Carcass Records: 0

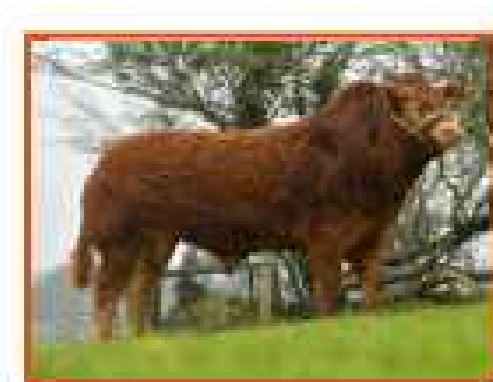
Star Rating (within breed)	Key Profit Traits	Index Value	Trait Reliability	Star Rating (across all beef breeds)
★★★★★	Gestation Length (Days)	1.63	61% (High)	★★★★☆
	Expected Gestation Length (Days)	282		
★★★★★	Carcass Weight (Kg)	33.2 Kg	46% (Average)	★★★★★
★★★★★	Carcass Conformation (1-5 Scale)	2.53 scale	45% (Average)	★★★★★
★★★☆☆	Feed Intake	-0.43d	36%	★★★★★
★★★☆☆	% Meeting Factory Specification	-19.85 scale		★★★★☆
★★★★★	Age at Slaughter	-1.27d	65%	★★★★☆

Ancestry





POWERFUL PROPER



Sire Overview

Easy Calving

Sexed

D.O.B	01-JUL-19
Breed	LM 100%
Bred By	Philip Crowe, Ballinagh, Co. Cavan
Myostatin Status	+/+ (Non-Carrier), Profit gene: F94L/F94L (2 Copies)
Price	€14.00 Conventional €44.00 Female Sexed

Download PDF

Add to Shortlist

Economic indexes

Star Rating (within breed)	Economic Index	€ Value per progeny	Index Reliability	Star Rating (across all beef breeds)
★★★★★	Dairy Beef Index (DBI)	€144	78% (High)	★★★★★
★★★☆☆	Beef Sub Index	€155	72% (High)	★★★★★
★★★★★	Calving Sub Index	€-3	90% (V High)	★★★★★

Calving Difficulty Total Dairy Calving Records: 275

When Mated With	%	Reliability
Dairy Heifers Breed Avg: 12.9% All Breeds Avg: 12.5%	8.91%	51% (Average)
Dairy Cows Breed Avg: 5.1% All Breeds Avg: 4.9%	3.92%	92% (V High)

Expected Progeny Performance Carcass Records: 0

Star Rating (within breed)	Key Profit Traits	Index Value	Trait Reliability	Star Rating (across all beef breeds)
★★★★★	Gestation Length (Days)	2.07	99% (V High)	★★★★★
	Expected Gestation Length (Days)	282		
★★★★★	Carcass Weight (Kg)	22.6 Kg	83% (V High)	★★★★★
★★★★★	Carcass Conformation (1-5 Scale)	2.28 scale	78% (High)	★★★★★
★★★☆☆	Feed Intake	-0.47d	49%	★★★★★
★★★★★	% Meeting Factory Specification	-19.41 scale		★★★★★
★★★☆☆	Age at Slaughter	2.96d	66%	★★★★★

Ancestry





MOONDHARRIG KNELL



Sire Overview

Replacement
Sexed

D.O.B	18-SEP-15
Breed	LM 100%
Bred By	Liam Walsh, Mooncoin, Co. Kilkenny
Myostatin Status	+/+ (Non-Carrier), Profit gene: F94L/F94L(2 Copies)
Price	€14.00 Conventional €44.00 Female Sexed

Download PDF
Add to Shortlist

Economic indexes

Star Rating (within breed)	Economic Index	€ Value per progeny	Index Reliability	Star Rating (across all beef breeds)
★★★★★	Dairy Beef Index (DBI)	€106	96% (V High)	★★★★★
★★★★★	Beef Sub Index	€151	94% (V High)	★★★★★
★★★★★	Calving Sub Index	€-34	98% (V High)	★★★★★

Calving Difficulty Total Dairy Calving Records: 4326

When Mated With	%	Reliability
Dairy Heifers Breed Avg: 12.9% All Breeds Avg: 12.5%	12.54%	91% (V High)
Dairy Cows Breed Avg: 5.1% All Breeds Avg: 4.9%	5.03%	99% (V High)

Expected Progeny Performance Carcass Records: 0

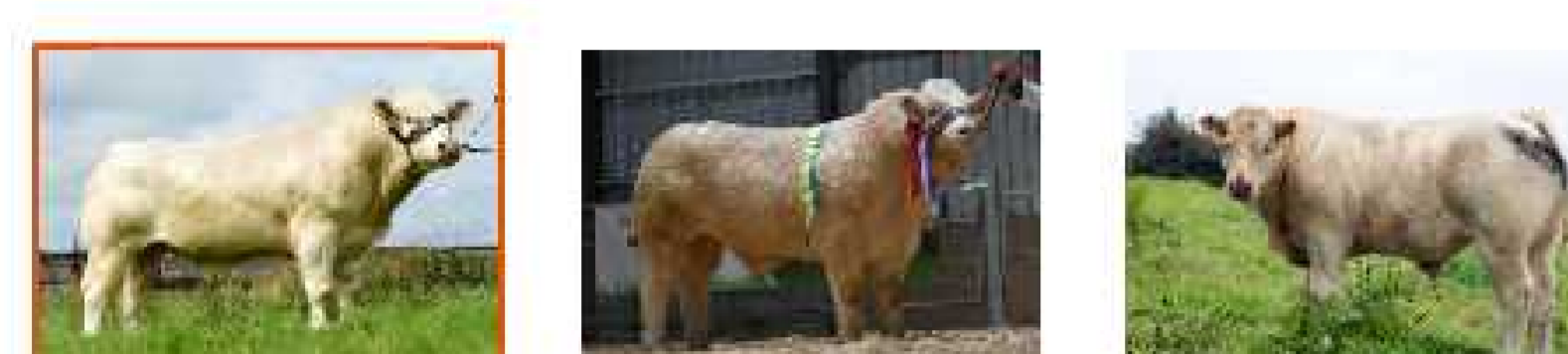
Star Rating (within breed)	Key Profit Traits	Index Value	Trait Reliability	Star Rating (across all beef breeds)
★★★★★	Gestation Length (Days)	2.87	99% (V High)	★★★★★
	Expected Gestation Length (Days)	283		
★★★★★	Carcass Weight (Kg)	20.7 Kg	99% (V High)	★★★★★
★★★★★	Carcass Conformation (1-5 Scale)	1.99 scale	99% (V High)	★★★★★
★★★★★	Feed Intake	-0.65d	78%	★★★★★
★★★★★	% Meeting Factory Specification	-20.49 scale		★★★★★
★★★★★	Age at Slaughter	5.64d	99%	★★★★★

Ancestry





LAPON



Sire Overview

Weanling

Finishing

D.O.B	20-DEC-15
ID	FR5706129452
Breed	CH 100%
Bred By	Earl Ofal, France
Myostatin Status	+/+ (Non-Carrier)
Genetic Defects	PROGRESSIVE ATAXIA: Carrier
Price	€14.00 Conventional

Download PDF

Add to Shortlist

Economic indexes

Star Rating (within breed)	Economic Index	€ Value per progeny	Index Reliability	Star Rating (across all beef breeds)
★★★★★	Dairy Beef Index (DBI)	€139	95% (V High)	★★★★★
★★★★★	Beef Sub Index	€191	95% (V High)	★★★★★
★★★★★	Calving Sub Index	€-39	93% (V High)	★★★★☆

Calving Difficulty Total Dairy Calving Records: 1667

When Mated With	%	Reliability
Dairy Heifers Breed Avg: 16.5% All Breeds Avg: 12.5%	13.74%	58% (Average)
Dairy Cows Breed Avg: 6.4% All Breeds Avg: 4.9%	5.44%	98% (V High)

Expected Progeny Performance Carcass Records: 0

Star Rating (within breed)	Key Profit Traits	Index Value	Trait Reliability	Star Rating (across all beef breeds)
★★★★☆	Gestation Length (Days)	2.11	99% (V High)	★★★★☆
	Expected Gestation Length (Days)	282		
★★★★★	Carcass Weight (Kg)	42.6 Kg	99% (V High)	★★★★★
★★★★★	Carcass Conformation (1-5 Scale)	2.27 scale	99% (V High)	★★★★★
★★★★☆	Feed Intake	0.05d	82%	★★★★☆
★★★★☆	% Meeting Factory Specification	-20.83 scale		★★★★☆
★★★★☆	Age at Slaughter	1.24d	99%	★★★★☆

Ancestry





ORBI



Sire Overview

Weanling
Finishing
Easy Calving

Show Stoppers
Sexed

D.O.B 17-SEP-18

ID FR7122079738

Breed CH 100%

Bred By Michel Bouchot, France

Myostatin Status Q204X/+ (1 Copy)

Genetic Defects PROGRESSIVE ATAXIA: Non Carrier

Price

- €14.00 Conventional
- €44.00 Female Sexed
- €44.00 Male Sexed

Download PDF
Add to Shortlist

Economic indexes

Star Rating (within breed)	Economic Index	€ Value per progeny	Index Reliability	Star Rating (across all beef breeds)
★★★★★	Dairy Beef Index (DBI)	€119	83% (V High)	★★★★★
★★★☆☆	Beef Sub Index	€161	81% (V High)	★★★★★
★★★★★	Calving Sub Index	€-31	84% (V High)	★★★★☆

Calving Difficulty

Total Dairy Calving Records: 139

When Mated With	%	Reliability
Dairy Heifers Breed Avg: 16.5% All Breeds Avg: 12.5%	12.99%	27% (Low)
Dairy Cows Breed Avg: 6.4% All Breeds Avg: 4.9%	4.79%	85% (V High)

Expected Progeny Performance

Carcass Records: 0

Star Rating (within breed)	Key Profit Traits	Index Value	Trait Reliability	Star Rating (across all beef breeds)
★★★★☆	Gestation Length (Days)	2.65	99% (V High)	★★★★☆
	Expected Gestation Length (Days)	283		
★★★★☆	Carcass Weight (Kg)	33.5 Kg	93% (V High)	★★★★★
★★★★☆	Carcass Conformation (1-5 Scale)	1.92 scale	91% (V High)	★★★★★
★★★☆☆	Feed Intake	0.15d	49%	★★★☆☆
★★★★★	% Meeting Factory Specification	-18.81 scale		★★★★★
★★★★☆	Age at Slaughter	2.16d	85%	★★★★☆

Ancestry





LISNACRANN FIFTY CENT



Sire Overview

Replacement

D.O.B 25-OCT-14

Breed SI 100%

Bred By Michael Oliver, Swinford, Co. Mayo

Myostatin Status +/- (Non-Carrier)

Price €14.00 Conventional

Download PDF Add to Shortlist

Economic indexes

Star Rating (within breed)	Economic Index	€ Value per progeny	Index Reliability	Star Rating (across all beef breeds)
★★★★★	Dairy Beef Index (DBI)	€59	95% (V High)	★★★★★
★★★★★	Beef Sub Index	€92	95% (V High)	★★★★★
★★★★★	Calving Sub Index	€-30	95% (V High)	★★★★★

Calving Difficulty Total Dairy Calving Records: 2916

When Mated With	%	Reliability
Dairy Heifers Breed Avg: 15.5% All Breeds Avg: 12.5%	13.71%	68% (High)
Dairy Cows Breed Avg: 6.2% All Breeds Avg: 4.9%	5.72%	99% (V High)

Expected Progeny Performance Carcass Records: 0

Star Rating (within breed)	Key Profit Traits	Index Value	Trait Reliability	Star Rating (across all beef breeds)
★★★★★	Gestation Length (Days)	0.48	99% (V High)	★★★★★
	Expected Gestation Length (Days)	281		
★★★★★	Carcass Weight (Kg)	14.1 Kg	99% (V High)	★★★★★
★★★★★	Carcass Conformation (1-5 Scale)	0.98 scale	99% (V High)	★★★★★
★★★★★	Feed Intake	0.32d	82%	★★★★★
★★★★★	% Meeting Factory Specification	-22.36 scale		★★★★★
★★★★★	Age at Slaughter	-1.94d	99%	★★★★★

Ancestry





KNOTTOWN ROY



Sire Overview

Replacement
Easy Calving
Sexed

Finishing

D.O.B	15-AUG-16
Breed	SA 100%
Bred By	Richard Fortune, Wexford
Myostatin Status	+/+ (Non-Carrier)
Price	€14.00 Conventional €44.00 Female Sexed

Download PDF
Shortlisted

Economic indexes

Star Rating (within breed)	Economic Index	€ Value per progeny	Index Reliability	Star Rating (across all beef breeds)
★★★★★	Dairy Beef Index (DBI)	€143	93% (V High)	★★★★★
★★★★★	Beef Sub Index	€120	93% (V High)	★★★★★
★★★★★	Calving Sub Index	€29	93% (V High)	★★★★★

Calving Difficulty Total Dairy Calving Records: 565

When Mated With	%	Reliability
Dairy Heifers Breed Avg: 6.9% All Breeds Avg: 12.5%	6.28%	64% (High)
Dairy Cows Breed Avg: 3% All Breeds Avg: 4.9%	3.06%	96% (V High)

Expected Progeny Performance Carcass Records: 0

Star Rating (within breed)	Key Profit Traits	Index Value	Trait Reliability	Star Rating (across all beef breeds)
★★★★★	Gestation Length (Days)	0.16	99% (V High)	★★★★★
	Expected Gestation Length (Days)	280		
★★★★★	Carcass Weight (Kg)	19.8 Kg	99% (V High)	★★★★★
★★★★★	Carcass Conformation (1-5 Scale)	1.02 scale	99% (V High)	★★★★★
★★★★★	Feed Intake	-0.19d	76%	★★★★★
★★★★★	% Meeting Factory Specification	-21.85 scale		★★★★★
★★★★★	Age at Slaughter	4.24d	98%	★★★★★

Ancestry



SP7494 **GARRENJAMES HENRY**
PP PED

USE ON : MATURE ONLY

Download PDF

Add to Shortlist

DAIRY BEEF BULL

CALVING EASE MATURE ONLY

HOMOZYGOUS POLLED



GARRENJAMES HENRY PP



Sire Overview

Polled

D.O.B 14-FEB-20

Breed SP 100%

Price €14.00 Conventional

Download PDF

Add to Shortlist

Economic indexes

Star Rating (within breed)	Economic Index	€ Value per progeny	Index Reliability	Star Rating (across all beef breeds)
★★★★★	Dairy Beef Index (DBI)	€61	66% (High)	★★★★★
★★★★★	Beef Sub Index	€56	52% (Average)	★★★★★
★★★★★	Calving Sub Index	€-1	93% (V High)	★★★★★

Calving Difficulty

Total Dairy Calving Records: 820

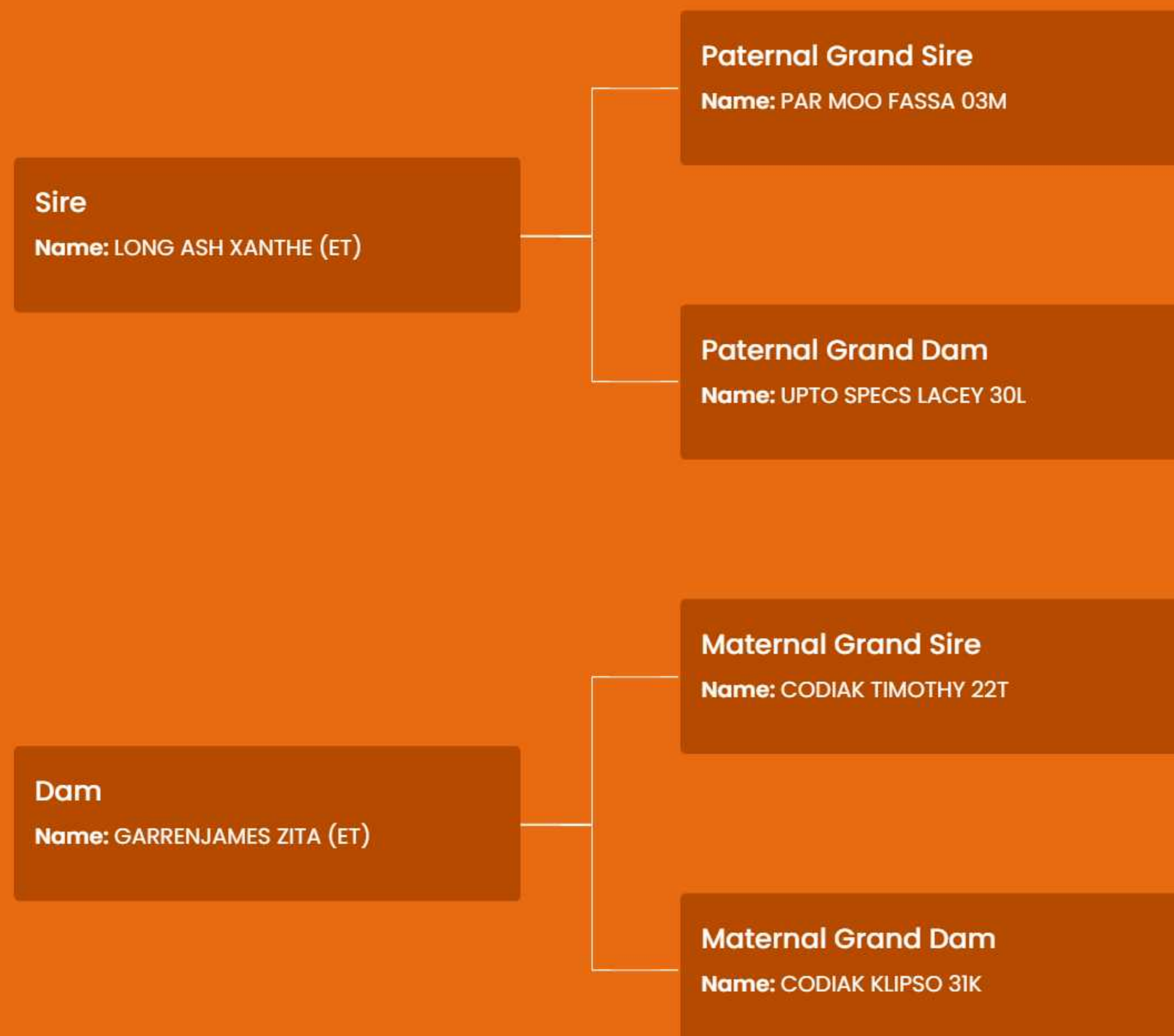
When Mated With	%	Reliability
Dairy Heifers Breed Avg: % All Breeds Avg: 12.5%	12.67%	63% (High)
Dairy Cows Breed Avg: % All Breeds Avg: 4.9%	4.93%	97% (V High)

Expected Progeny Performance

Carcass Records: 0

Star Rating (within breed)	Key Profit Traits	Index Value	Trait Reliability	Star Rating (across all beef breeds)
★★★★★	Gestation Length (Days)	-1.49	99% (V High)	★★★★★
	Expected Gestation Length (Days)	279		
★★★★★	Carcass Weight (Kg)	-6.1 Kg	59% (Average)	★★★★★
★★★★★	Carcass Conformation (1-5 Scale)	0.98 scale	51% (Average)	★★★★★
★★★★★	Feed Intake	0.06d	35%	★★★★★
★★★★★	% Meeting Factory Specification	-29.64 scale		★★★★★
★★★★★	Age at Slaughter	-4.36d	63%	★★★★★

Ancestry



OUR TEAM

West Cork



Declan Keating
Farm Relationship Manager
086 8164024



David Buckley
Breeding Advisor
086 3962114

North Cork



Joe O'Flynn
Farm Relationship Manager
086 4030646



Jack Walsh
Breeding Advisor
087 1030356



Patrick Moloney
Breeding Advisor
083 0049402

South Cork



Anthony Buckley
Farm Relationship Manager
086 0274558



Tom Tobin
Breeding Advisor
087 2758061



Brian Hayes
Breeding Advisor
087 6957999

Limerick



John Ryan
Farm Relationship Manager
086 8352700



Jack Walsh
Breeding Advisor
087 1030356



James Foley
Breeding Advisor
086 1956617

Clare Galway



John Meehan
Farm Relationship Manager
086 6054723



Donal Coppinger
Breeding Advisor
087 3159166

Kerry



James Egan
Farm Relationship Manager
086 3650665



Jack Walsh
Breeding Advisor
087 1030356



James Foley
Breeding Advisor
086 1956617

East Cork
/West Waterford



Billy Fitzgerald
Farm Relationship Manager
086 4126727



Patrick Moloney
Breeding Advisor
083 0049402



David Mc Grath
Breeding Advisor
087 2241573

Tipperary
/ Mitchelstown



Graham Swanton
Farm Relationship Manager
087 7420965



Ben Slee
Breeding Advisor
087 2902031

**NEW DEDICATED TEXT NUMBER FOR BOOKING AI TECHNICIAN CALL SERVICE
SIMPLY TEXT BTE NO. TO **086 387 6259** BEFORE 12 NOON MON-FRI & BEFORE
10AM SAT, SUN AND BANK HOLIDAYS FOR SAME DAY SERVICE.**